

MAGAIN



403A/211 Grenfell Street ADELAIDE SA

1 1 1

Stylish East End Pad!

This spacious, 1 bedroom apartment will stand out from the crowd with high quality fixtures and fittings throughout and an outstanding East End position.

For the security conscious it features swipe and intercom entrance to the building, lift and car park as well as offering arguably the best lifestyle features in the CBD. 24 Hour access to the state of the art gym, lap pool, spa, steam room and for you Wine lovers a secure temperature controlled lock up wine cabinet which will hold approximately 88 bottles.

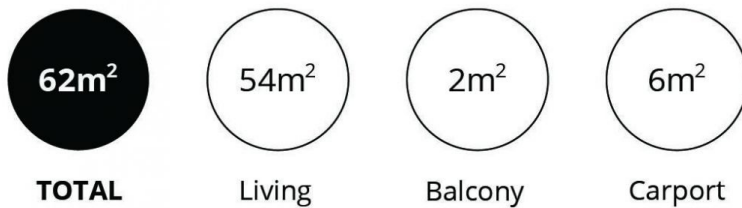
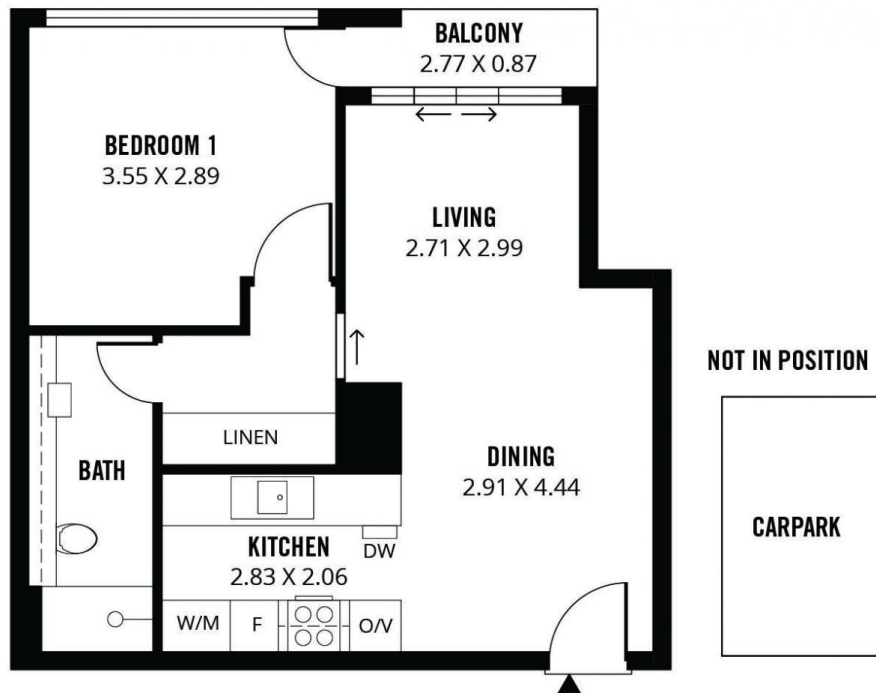
The Why To Buy :-)

[For full version visit the website](https://www.magain.com.au/property/403a211-grenfell-street-adelaide-sa/8423188)

Type : Apartment
Building Size : 62 sqm
View : <https://www.magain.com.au/property/403a211-grenfell-street-adelaide-sa/8423188>

<https://www.magain.com.au>
Magain Real Estate

765 Marion Road Ascot Park SA
08 8277 1777



Scale in metres. This drawing is for illustration purposes only. All measurements are approximate and details intended to be relied upon should be independently verified.

Produced by **The Fotobase Group**