




MAGAIN



291 Gilles Street ADELAIDE SA

2  **1**  **1** 

Gorgeous On Gilles With Off Street Parking!

This stunning, Circa 1880 Row Cottage is a lovely example of a bygone era and is perfectly positioned on the end and corner of a row of 6 which allows an abundance of natural light and ease of access in and out of the garage.

Retaining many beautiful heritage features it has also been tastefully updated throughout blending both new and old to offer the convenience of a comfortable and contemporary inner city life.

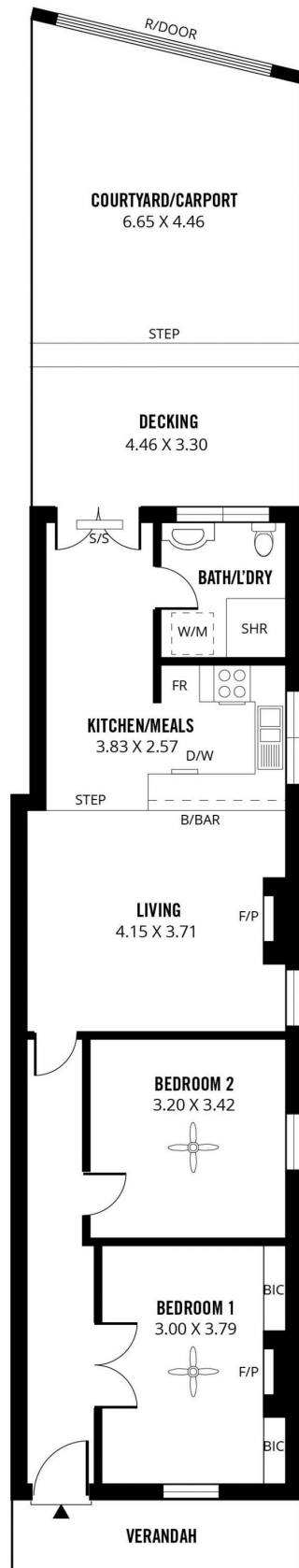
With a cosmopolitan South East corner location which is renowned for some of Adelaide's best shopping, dining and entertainment you are in position A for an exciting city

Type : House
Building Size : 114 sqm
Land Size : 127 sqm
View : <https://www.magain.com.au/property/291-gilles-street-adelaide-sa/8423203>

[For full version visit the website](https://www.magain.com.au/property/291-gilles-street-adelaide-sa/8423203)

<https://www.magain.com.au>
Magain Real Estate

765 Marion Road Ascot Park SA
08 8277 1777



114m²

TOTAL

72m²

Living

7m²

Verandah

35m²

Courtyard/
Decking

Scale in metres. This drawing is for illustration purposes only. All measurements are approximate and details intended to be relied upon should be independently verified.

Produced by **The Fotohase Group**