




MAGAIN



105/211 Grenfell Street ADELAIDE SA

2  **2**  **1** 

This immaculate lifestyle apartment is larger than your standard offering and with your spacious living area and balcony both facing North and literally only a hundred Metre walk to Rundle Street you are in perfect position to enjoy the superb East End.

Type : Apartment
Building Size : 114 sqm
View : <https://www.magain.com.au/property/105211-grenfell-street-adelaide-sa/8423213>

The Why To Buy :-)

2 Well sized double bedrooms both with built in robes

Master bedroom has sparkling ensuite

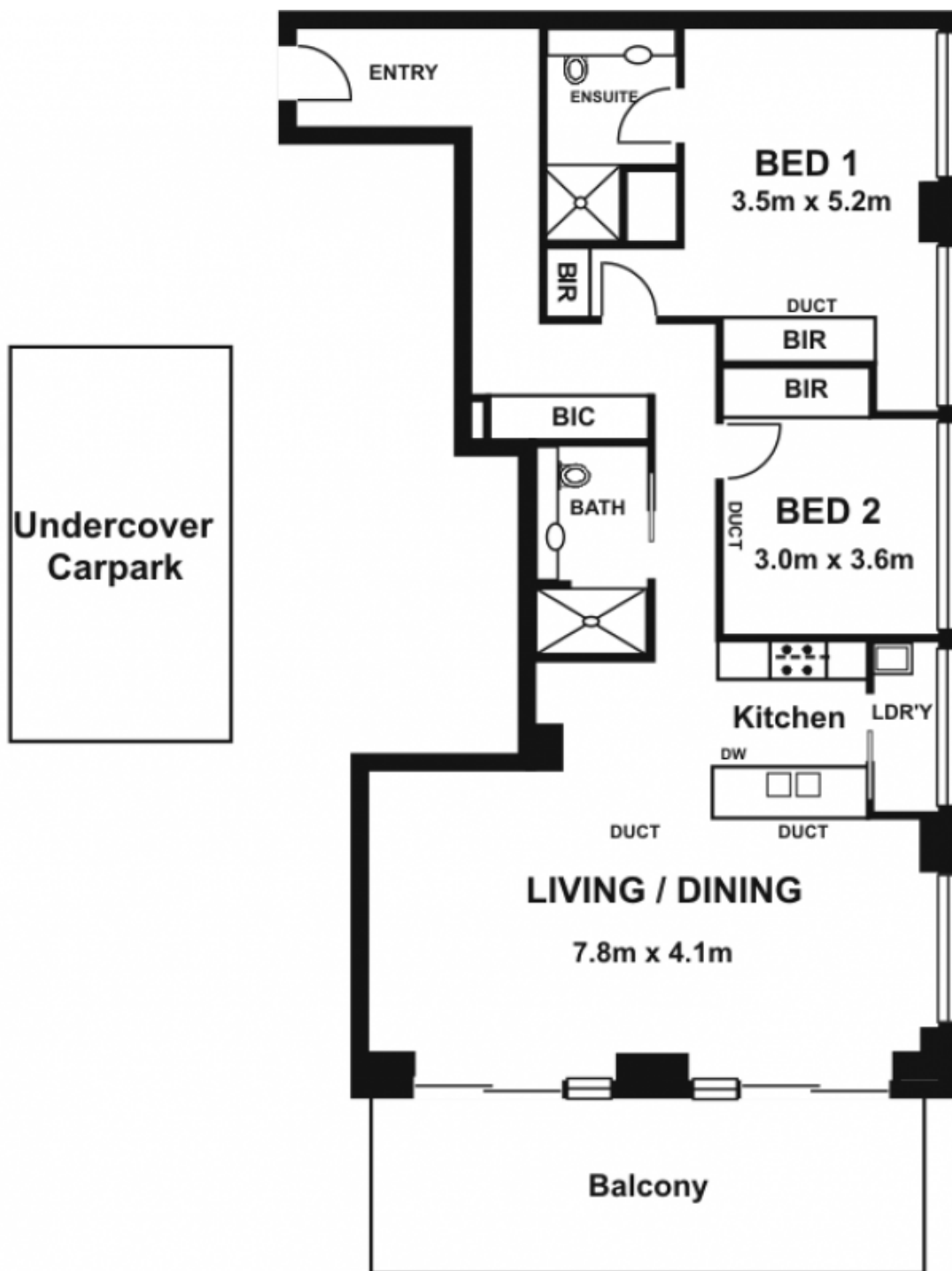
Large open living/dining with floor to ceiling windows

Stylish modern kitchen with Miele appliances and stone

[For full version visit the website](https://www.magain.com.au)

<https://www.magain.com.au>
Magain Real Estate

765 Marion Road Ascot Park SA
08 8277 1777



Living Area		107.60sqm
Balcony		18.70sqm
Carpark		14.80sqm
Total	Approx.	141.10sqm

Please Note: Every care has been taken to verify the correctness of the areas and details used in this leaflet. No warranty or representation is given or made as to the correctness of the information supplied and neither the owners, illustrator nor the Agents can accept responsibility for errors or omissions. The sketch is for illustration purposes only and intending purchasers should satisfy themselves independently regarding sizes, layout and location of the property. Please check with local council that all structures are approved by council.