

MAGAIN



24/56 Whitmore Square ADELAIDE SA

2 1 1

Best Offer by 12pm, 16th May

City Realty is pleased to bring you this wonderful opportunity to secure yourself a tightly held home and add your very own eco-friendly footprint in the Architecturally designed, Eco Friendly and Award-Winning Whitmore Square apartments.

Nestled on the edge of Whitmore Square and in the same complex as one of the best and most trendy cafe's in Adelaide in 'Troppo', this townhouse in the sky offers a refreshing point of difference with its earthy style and materials, split level living and Eco-Friendly features which together meld perfectly to create a sense of 'home' and pride in where you live.

[For full version visit the website](https://www.magain.com.au/property/24-56-whitmore-square-adelaide-sa/842322)

Type	: Townhouse
Price	: \$ 498,100
Building Size	: 104 sqm
View	: https://www.magain.com.au/property/24-56-whitmore-square-adelaide-sa/842322

<https://www.magain.com.au>
Magain Real Estate

765 Marion Road Ascot Park SA
08 8277 1777



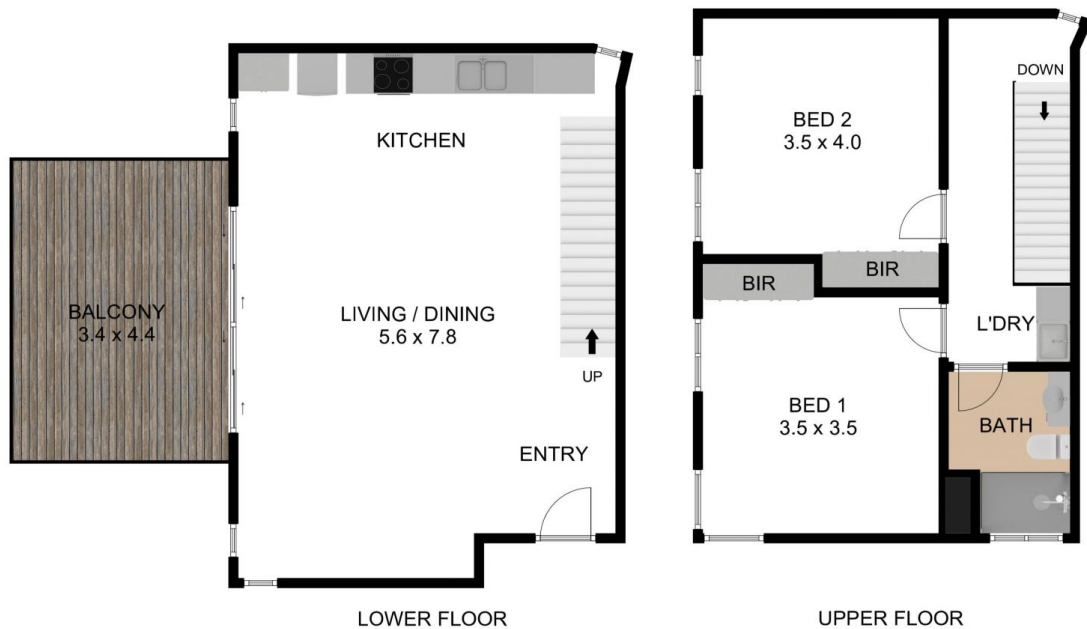
24/42-56 WHITMORE SQUARE, ADELAIDE SA 5000

88.60 M²
INTERNAL LIVING

15.00 M²
BALCONY

103.60 M²
GRAND TOTAL

THE FLOOR PLAN IS FOR ILLUSTRATION PURPOSE ONLY. MEASUREMENTS ARE APPROXIMATE AND INTERNAL. NOT TO SCALE © BREP



24/42-56 WHITMORE SQUARE, ADELAIDE SA 5000

88.60 M²
INTERNAL LIVING

15.00 M²
BALCONY

103.60 M²
GRAND TOTAL

THE FLOOR PLAN IS FOR ILLUSTRATION PURPOSE ONLY. MEASUREMENTS ARE APPROXIMATE AND INTERNAL. NOT TO SCALE © BREP