

# MAGAIN



178 Petherton Road ANDREWS FARM SA

3 2 2

**\*\*Under Offer\*\***

City Realty is proud to bring this wonderful opportunity to secure your own home in the popular and fast-growing family neighbourhood of Andrews Farm.

The perfect first home for those wanting to escape the current high pressure rental market and find a property to make their own or an excellent addition to your investment portfolio to capitalise on quickly growing rental prices, this home offers a neat and tidy style of living with a generous rear yard ready for a new lease of life.

Located within a stone throw of the Eyre Village Shopping centre and with easy walking access to Serpentine Park

[For full version visit the website](https://www.magain.com.au/property/178-petherton-road-andrews-farm-sa/8423223)

**Type** : House  
**Building Size** : 114 sqm  
**Land Size** : 300 sqm  
**View** : <https://www.magain.com.au/property/178-petherton-road-andrews-farm-sa/8423223>

<https://www.magain.com.au>  
Magain Real Estate

765 Marion Road Ascot Park SA  
08 8277 1777



C|R

178 PETHERTON ROAD, ANDREWS FARM SA 5114

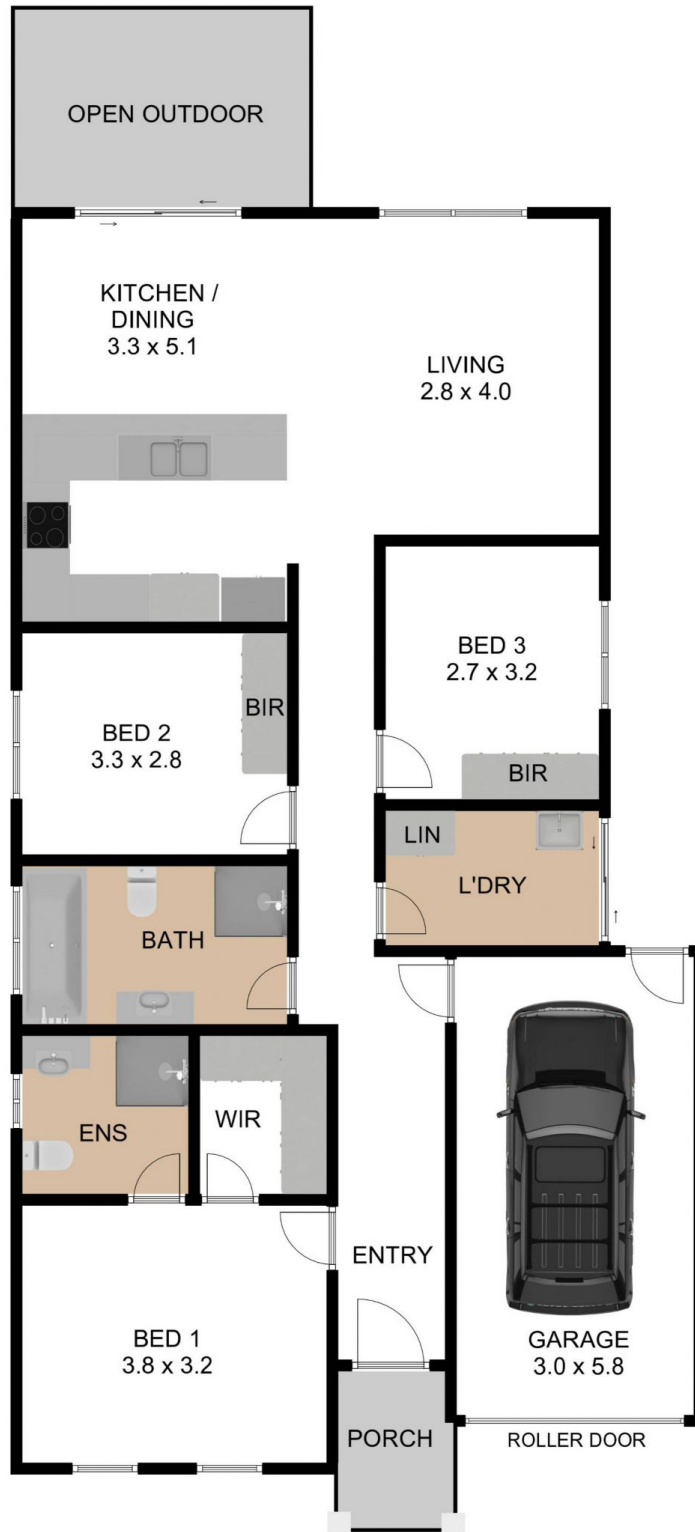
**102.20 M<sup>2</sup>**  
INTERNAL AREA

**17.40 M<sup>2</sup>**  
GARAGE

**2.60 M<sup>2</sup>**  
PORCH

**122.20 M<sup>2</sup>**  
GRAND TOTAL

THE FLOOR PLAN IS FOR ILLUSTRATION PURPOSE ONLY. MEASUREMENTS ARE APPROXIMATE AND INTERNAL. NOT TO SCALE © BRGF



C|R

178 PETHERTON ROAD, ANDREWS FARM SA 5114

**102.20 M<sup>2</sup>**  
INTERNAL AREA

**17.40 M<sup>2</sup>**  
GARAGE

**2.60 M<sup>2</sup>**  
PORCH

**122.20 M<sup>2</sup>**  
GRAND TOTAL

THE FLOOR PLAN IS FOR ILLUSTRATION PURPOSE ONLY. MEASUREMENTS ARE APPROXIMATE AND INTERNAL. NOT TO SCALE © BRG