

MAGAIN



18/29 St Helena Place ADELAIDE SA

2 1 1

City Realty is pleased to offer you this spacious top floor unit, perfectly positioned to take full advantage of Adelaide's thriving city center including the Gouger Street dining precinct, Historic Central Markets, Victoria Square, Halifax staples including the Greek on Halifax, the Free Adelaide Tram and the very close by Calvary Hospital - all on your doorstep!

With views of the rolling Adelaide Hill line and plenty of natural light filling the open plan kitchen/ dining rooms there is plenty of reason to love this unit and make it your Adelaide base, either as your first home or lock up and leave solution.

For investors, the location is blue chip and will ensure

[For full version visit the website](https://www.magain.com.au/property/1829-st-helena-place-adelaide-sa/8423239)

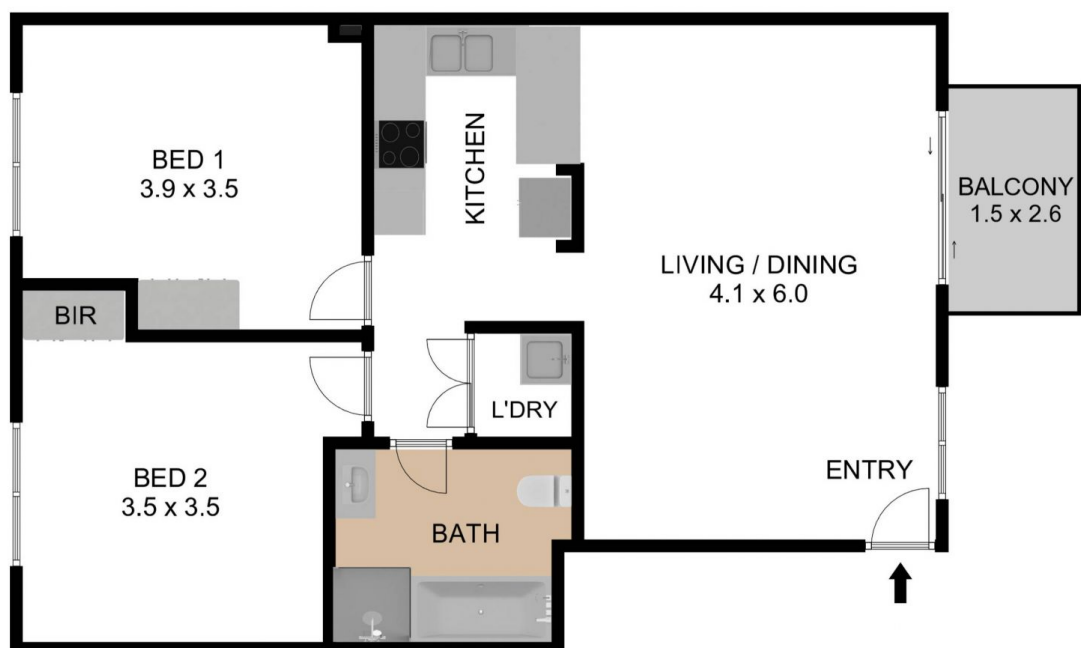
Type : Apartment

Price : \$ 395,000

View : <https://www.magain.com.au/property/1829-st-helena-place-adelaide-sa/8423239>

<https://www.magain.com.au>
Magain Real Estate

765 Marion Road Ascot Park SA
08 8277 1777



C|R

18/29 ST HELENA PLACE, ADELAIDE SA 5000

71.50 M²

INTERNAL LIVING

4.30 M²

BALCONY

75.80 M²

GRAND TOTAL

THE FLOOR PLAN IS FOR ILLUSTRATION PURPOSE ONLY. MEASUREMENTS ARE APPROXIMATE AND INTERNAL. NOT TO SCALE © BRG



C|R

18/29 ST HELENA PLACE, ADELAIDE SA 5000

71.50 M²

INTERNAL LIVING

4.30 M²

BALCONY

75.80 M²

GRAND TOTAL

THE FLOOR PLAN IS FOR ILLUSTRATION PURPOSE ONLY. MEASUREMENTS ARE APPROXIMATE AND INTERNAL. NOT TO SCALE © BRG