

# MAGAIN



## 201/23 Frew Street ADELAIDE SA

1 1

City Realty is pleased to be able to offer you this very neat and tidy home which has kept in perfect condition by proud homeowners since it was built in 2013.

Situated in the highly respected ERGO development across Frew and Sturt Street, this home offers the perfect low maintenance city lifestyle option for a new homeowner, lock up and leave traveller or astute investor.

The floorplan is very efficient with no hallways or corridors to navigate, and the balcony provides for a beautifully framed view of Sunsets in the evening!

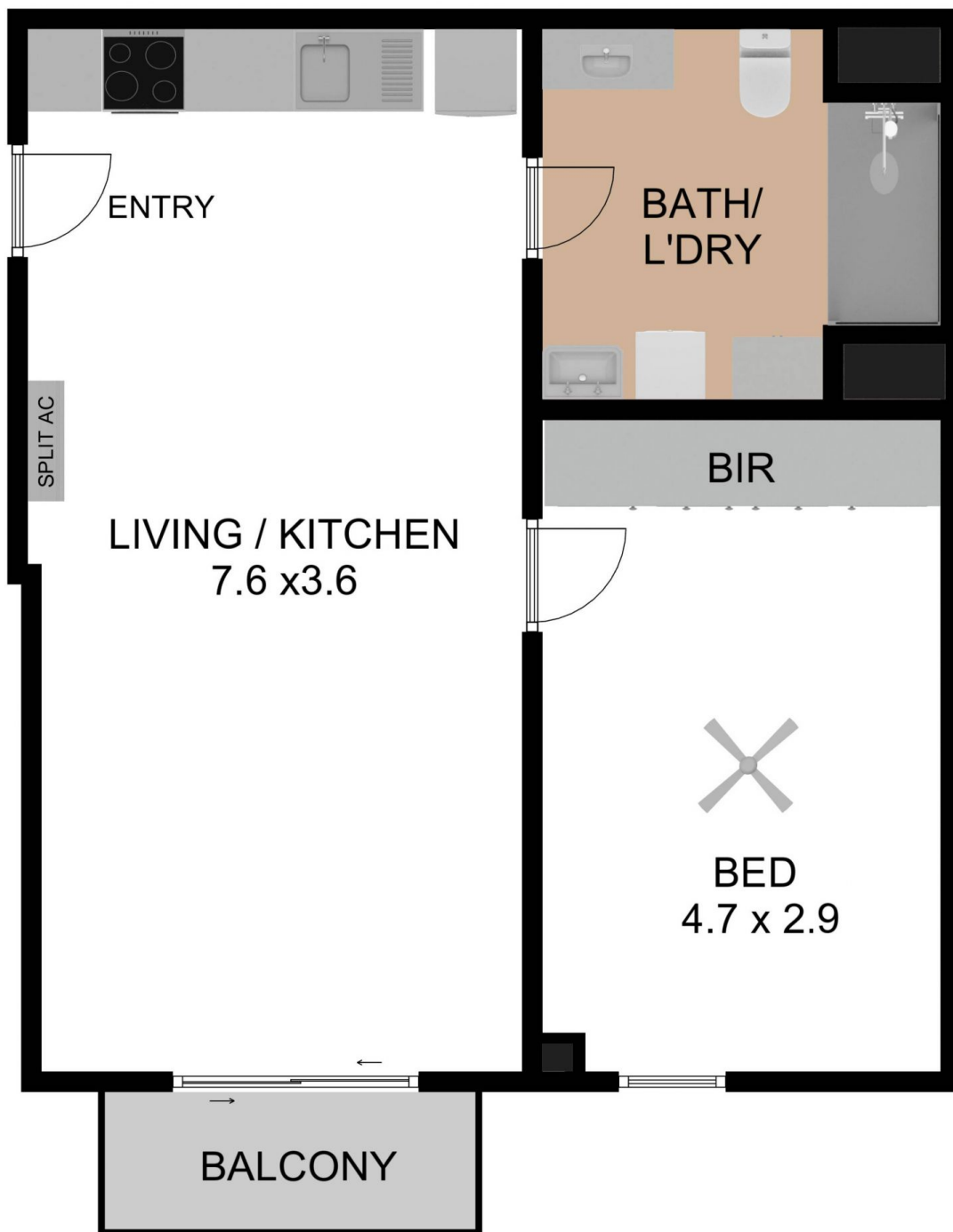
Pictures tell a thousand words and there is plenty to love including:

[For full version visit the website](https://www.magain.com.au/property/20123-frew-street-adelaide-sa/8423241)

<b>Type</b>	: Apartment
<b>Price</b>	: \$ 321,000
<b>Building Size</b>	: 58 sqm
<b>View</b>	: <a href="https://www.magain.com.au/property/20123-frew-street-adelaide-sa/8423241">https://www.magain.com.au/property/20123-frew-street-adelaide-sa/8423241</a>

<https://www.magain.com.au>  
Magain Real Estate

765 Marion Road Ascot Park SA  
08 8277 1777



C|R

201/23 FREW STREET, ADELAIDE SA 5000

**55.00 M<sup>2</sup>**

INTERNAL LIVING

**3.00 M<sup>2</sup>**

BALCONY

**58.00 M<sup>2</sup>**

GRAND TOTAL

THE FLOOR PLAN IS FOR ILLUSTRATION PURPOSE ONLY. MEASUREMENTS ARE APPROXIMATE AND INTERNAL. NOT TO SCALE © BREP



C|R

201/23 FREW STREET, ADELAIDE SA 5000

**55.00 M<sup>2</sup>**  
INTERNAL LIVING

**3.00 M<sup>2</sup>**  
BALCONY

**58.00 M<sup>2</sup>**  
GRAND TOTAL

THE FLOOR PLAN IS FOR ILLUSTRATION PURPOSE ONLY. MEASUREMENTS ARE APPROXIMATE AND INTERNAL. NOT TO SCALE © BREP