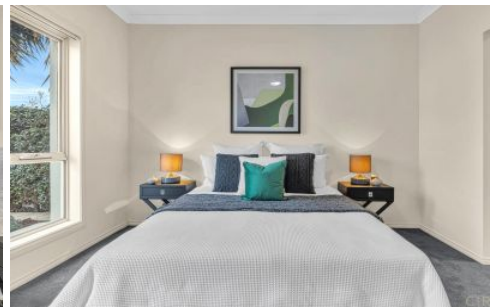


MAGAIN



18 Grasswren Way MAWSON LAKES SA

3 2 2

Positioned in Mawson Lakes Central, this stunning home exudes ambiance and warmth drawing you into a simple and relaxing lifestyle. This light-filled spacious home has it all, both inside and out.

The perfect home to all types of buyers from the young growing families or the professional couples to the first home-owner who loves lots of space and entertaining guests.

Imagine enjoying a morning walk on the many walking/bike trails surrounded by beautiful modern homes or stroll to the main lake to catch up with friends over lunch.

Or enjoy the evenings in creating gourmet meals for the

Type : House
Building Size : 138 sqm
Land Size : 300 sqm
View : <https://www.magain.com.au/property/18-grasswren-way-mawson-lakes-sa/8423259>

[For full version visit the website](https://www.magain.com.au)

<https://www.magain.com.au>
Magain Real Estate

765 Marion Road Ascot Park SA
08 8277 1777



C|R

18 GRASSWREN WAY, MAWSON LAKES SA 5095

152.00 M²
INTERNAL LIVING

17.40 M²
GARAGE

2.40 M²
PORCH

36.80 M²
OUTDOOR UA

208.60 M²
GRAND TOTAL

THE FLOOR PLAN IS FOR ILLUSTRATION PURPOSE ONLY. MEASUREMENTS ARE APPROXIMATE AND INTERNAL. NOT TO SCALE © BREP



C|R

18 GRASSWREN WAY, MAWSON LAKES SA 5095

152.00 M²

INTERNAL LIVING

17.40 M²

GARAGE

2.40 M²

PORCH

36.80 M²

OUTDOOR UA

208.60 M²

GRAND TOTAL

THE FLOOR PLAN IS FOR ILLUSTRATION PURPOSE ONLY. MEASUREMENTS ARE APPROXIMATE AND INTERNAL. NOT TO SCALE © BREP