




MAGAIN



12 Silvertop Court CRAIGMORE SA

3  1  1 

Located in a quiet cul-de-sac street, this colonial style courtyard home offers the perfect opportunity to move in or commence your investment portfolio.

Offering three good sized bedrooms, the master bedroom also includes a built-in robe and walk through access to a two-way bathroom, which has a separate shower and bath.

The open kitchen/meals and family area, with floating laminated timber flooring and gas cooktop, is perfectly positioned to take advantage of the rear undercover entertaining area, which overlooks the rear garden, perfect for entertaining family and friends.

A single carport is located at the front, providing easy

Type : House
Land Size : 295 sqm
View : <https://www.magain.com.au/property/12-silvertop-court-craigmore-sa/8423269>

[For full version visit the website](https://www.magain.com.au/property/12-silvertop-court-craigmore-sa/8423269)

<https://www.magain.com.au>
Magain Real Estate

765 Marion Road Ascot Park SA
08 8277 1777

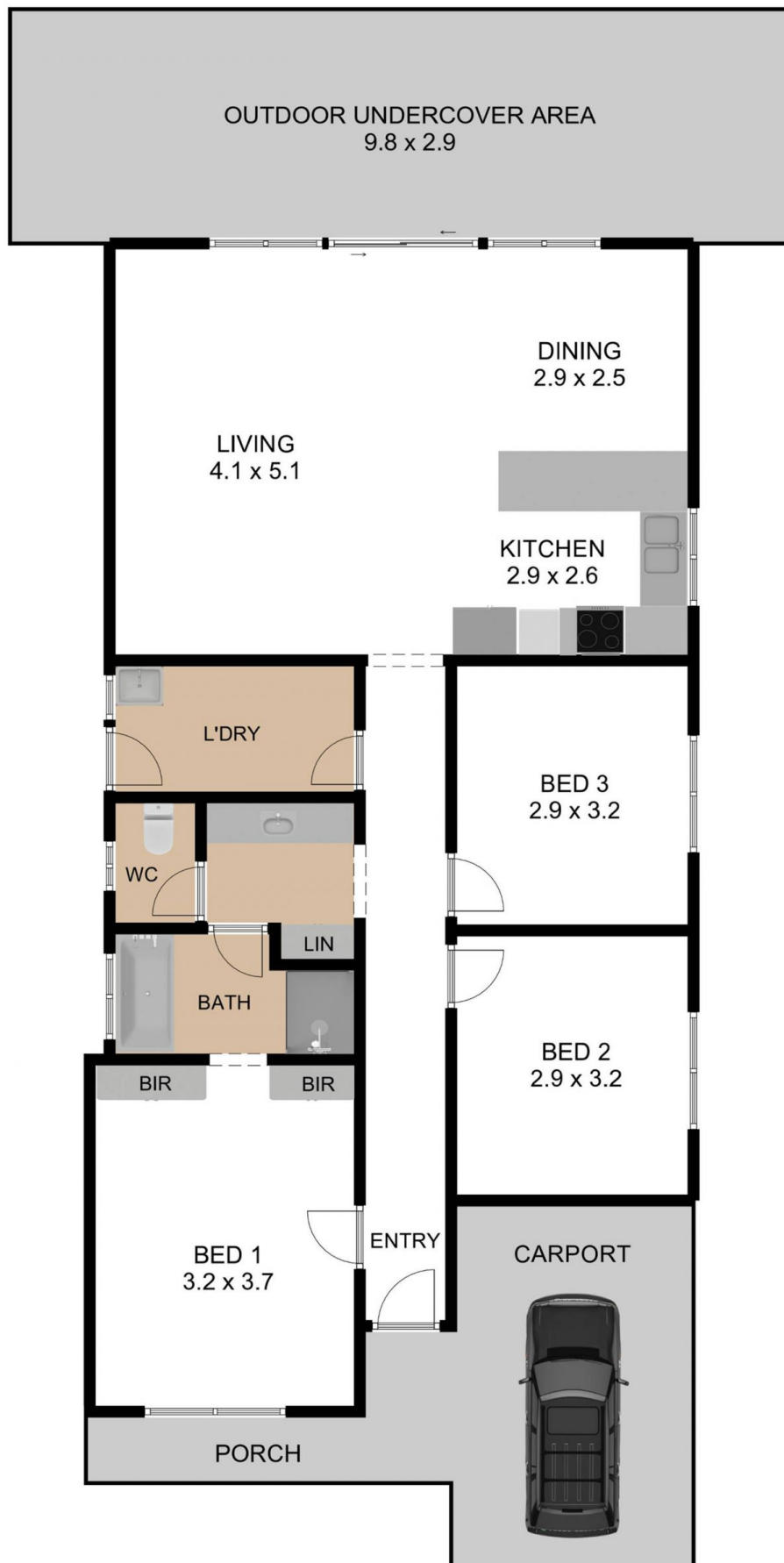


C|R

12 SILVERTOP COURT, CRAIGMORE SA 5114

TOTAL INTERNAL LIVING AREA : 101.30 M² OUTDOOR UA + CARPORT + PORCH : 46.50 M² GRAND TOTAL : 147.80 M²

THE PLAN IS FOR ILLUSTRATION PURPOSE ONLY. MEASUREMENTS ARE APPROXIMATE AND INTERNAL. NOT TO SCALE.



C|R

12 SILVERTOP COURT, CRAIGMORE SA 5114

TOTAL INTERNAL LIVING AREA : 101.30 M² OUTDOOR UA + CARPORT + PORCH : 46.50 M² GRAND TOTAL : 147.80 M²

THE PLAN IS FOR ILLUSTRATION PURPOSE ONLY. MEASUREMENTS ARE APPROXIMATE AND INTERNAL. NOT TO SCALE.