

MAGAIN



12 Wright Court ADELAIDE SA

2  1 

City Realty is pleased to offer this fully renovated 1880's Georgian Style Row Cottage as available to the market for the first time in over a decade. Rarely do we see such a quaint and cute cottage come to market so close to the vibrancy of the Central Markets and Gouger Street precinct.

If you are after location, lifestyle and history then you simply must take a look at this home and ensure you get your hands on this prime real estate, whether you are a inner city dweller, savvy investor or Airbnb enthusiast!

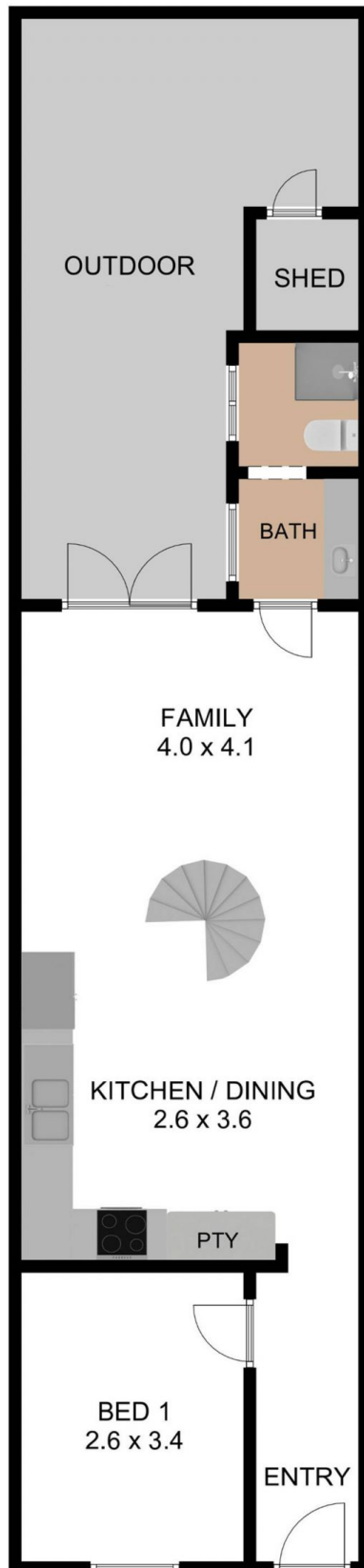
As you step past the cute faade and into the hallway entrance you will be lead past the traditional front bedroom and into an open kitchen/ dining and lounge which provides

Type	: House
Price	: \$ 600,000
Building Size	: 100 sqm
Land Size	: 75 sqm
View	: https://www.magain.com.au/property/12-wright-court-adelaide-sa/8423272

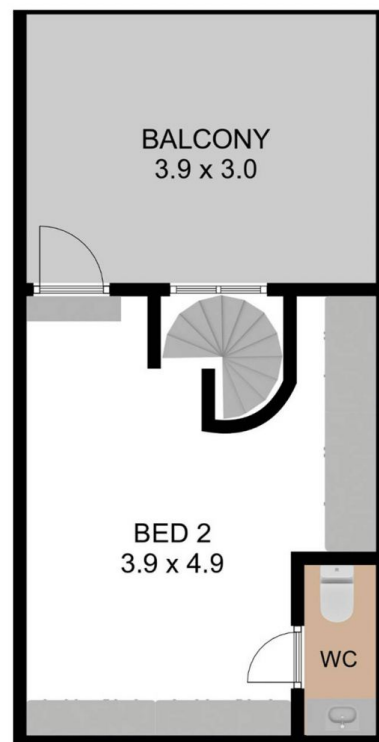
[For full version visit the website](https://www.magain.com.au)

<https://www.magain.com.au>
Magain Real Estate

765 Marion Road Ascot Park SA
08 8277 1777



GROUND FLOOR



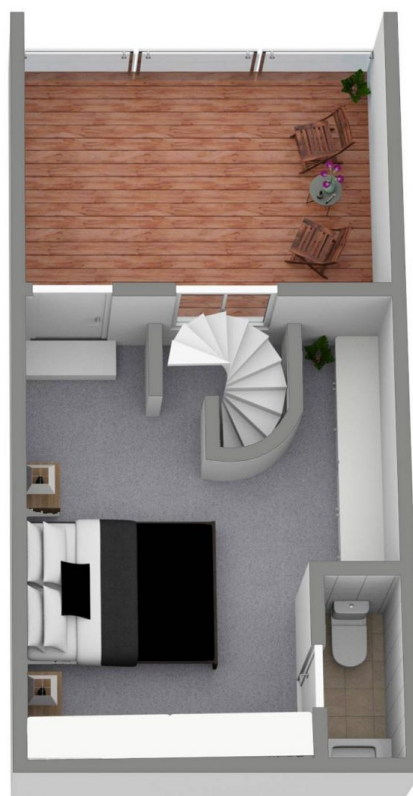
FIRST FLOOR

C|R

12 WRIGHT COURT, ADELAIDE SA 5000

TOTAL INTERNAL LIVING AREA : 74.10 M² BALCONY + OUTDOOR : 31.70 M² GRAND TOTAL : 105.80 M²

THE FLOOR PLAN IS FOR ILLUSTRATION PURPOSE ONLY. MEASUREMENTS ARE APPROXIMATE AND INTERNAL. NOT TO SCALE.



C|R

12 WRIGHT COURT, ADELAIDE SA 5000

TOTAL INTERNAL LIVING AREA : 74.10 M² BALCONY + OUTDOOR : 31.70 M² GRAND TOTAL : 105.80 M²

THE FLOOR PLAN IS FOR ILLUSTRATION PURPOSE ONLY. MEASUREMENTS ARE APPROXIMATE AND INTERNAL. NOT TO SCALE.