




MAGAIN



7 Rapid Avenue LIGHTSVIEW SA

4  2  2 

Beautifully presented this custom-built single storey home constructed in 2011 offers the ultimate in low maintenance living. Situated only minutes from parks, shopping precincts, transport and lifestyle family activities, all part of living in Lightsview.

Type : House
Land Size : 413 sqm
View : <https://www.magain.com.au/property/7-rapid-avenue-lightsview-sa/8423275>

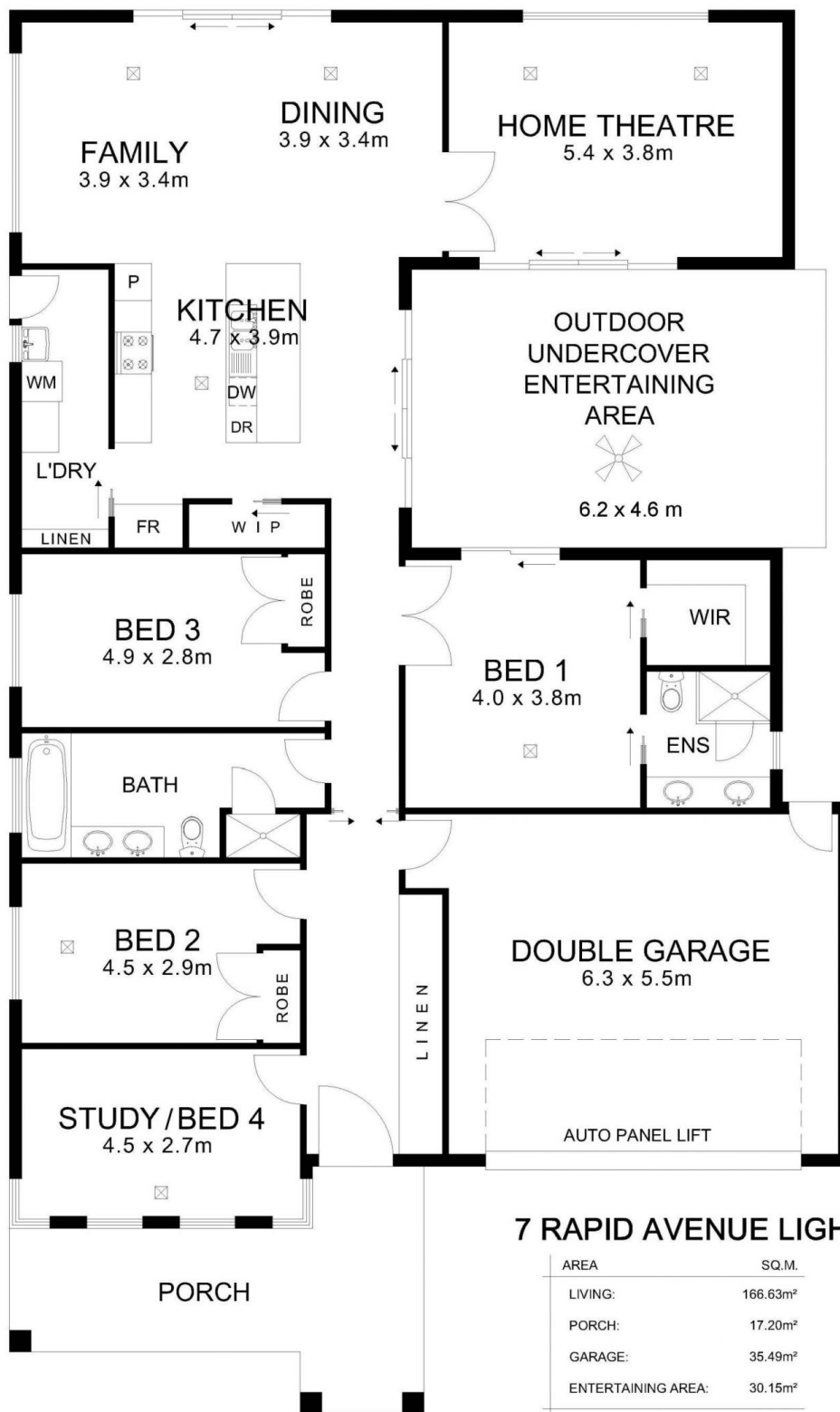
Built on a 15 metre wide premium allotment to exacting standards, this home has been cleverly designed to maximise the build size with easy care living in mind.

Providing an imposing first impression, a large front portico featuring a natural timber facade, expansive front door and raised 3m ceiling, invites you into this impressive entrance. There is also extensive storage with built-in floor to ceiling cupboard space, which enhances the appeal.

[For full version visit the website](https://www.magain.com.au/property/7-rapid-avenue-lightsview-sa/8423275)

<https://www.magain.com.au>
Magain Real Estate

765 Marion Road Ascot Park SA
08 8277 1777



NOTE: While every effort has been made to verify the correct details in this brochure, neither the vendor, illustrator or agent accept liability for any error or omission. All parties are requested to take relevant action to satisfy themselves of any issues.
 @ Copyright 2018 MAYMEDIA®