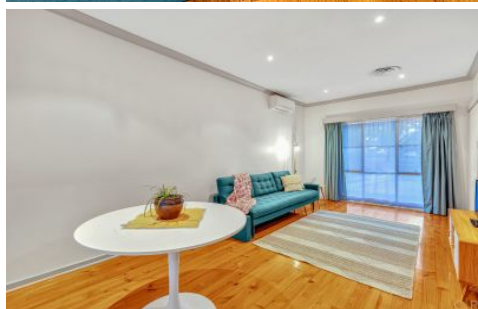


MAGAIN



23 Shillabeer Road ELIZABETH PARK SA

3 1 4

**** Best Offers By 20th May 2021 - Unless Sold Prior ****

Located in a quiet cul-de-sac, this neat 3-bedroom brick home is a great start for first-home buyers looking for their first home. Imagine what you can do on this large block of land without breaking the bank!

Alternatively, this property will make a great investment achieving a private rental of \$310 per week by the current owner. Situated in an excellent location, close to the Elizabeth Shopping Centre, local schools and transport, it is an ideal home for both home owners and renters.

What we love about this property:

[For full version visit the website](https://www.magain.com.au/property/23-shillabeer-road-elizabeth-park-sa/8423276)

Type : House
Building Size : 112 sqm
Land Size : 767 sqm
View : <https://www.magain.com.au/property/23-shillabeer-road-elizabeth-park-sa/8423276>

<https://www.magain.com.au>
Magain Real Estate

765 Marion Road Ascot Park SA
08 8277 1777

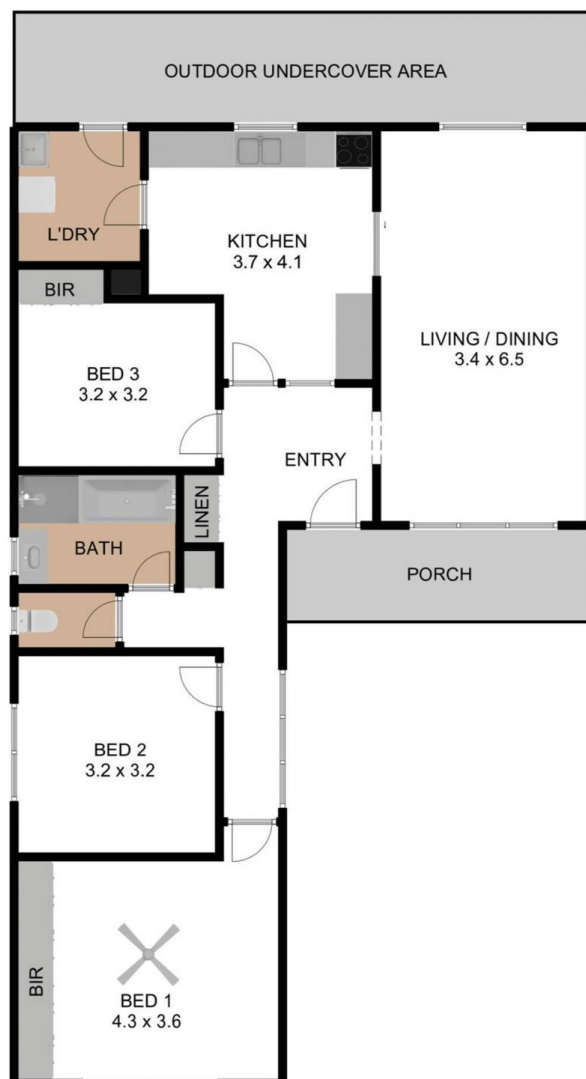
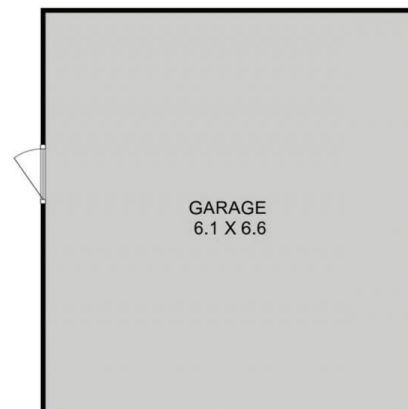
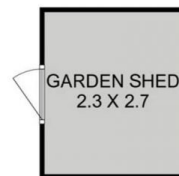


C|R

23 SHILLABEER ROAD, ELIZABETH PARK SA 5113

TOTAL INTERNAL LIVING AREA : 103.30 M² PORCH + OUTDOOR UA + GARAGE : 64.9 M² GRAND TOTAL : 168.20 M²

THE FLOOR PLAN IS FOR ILLUSTRATION PURPOSE ONLY. MEASUREMENTS ARE APPROXIMATE AND INTERNAL. NOT TO SCALE.



C|R

23 SHILLABEER ROAD, ELIZABETH PARK SA 5113

TOTAL INTERNAL LIVING AREA : 103.30 M² PORCH + OUTDOOR UA + GARAGE : 64.9 M² GRAND TOTAL : 168.20 M²

THE FLOOR PLAN IS FOR ILLUSTRATION PURPOSE ONLY. MEASUREMENTS ARE APPROXIMATE AND INTERNAL. NOT TO SCALE.