

# MAGAIN



## 13/15 Windsong Court MORPHETT VALE SA

3 2 2

A unique contemporary NRAS (National Rental Affordability Scheme) property that is well suited to first home buyers, downsizers, and investors, with an existing tenancy in place till November 2021 and would be happy to stay on should an investor purchase the property.

For those interested investors, the current rent is \$270 per week and with the \$11,000 (aprox.) per year Government payment as a NRAS rental, the gross return on investment is approximately 8.3% or \$25,040 per year. Give agent a call for more information.

This stunning community title home is designed to provide low maintenance living. This house oozes warmth and ambience from the moment you step inside.

[For full version visit the website](https://www.magain.com.au/property/13-15-windsong-court-morphett-vale-sa/8423278)

**Type** : House  
**Building Size** : 107 sqm  
**Land Size** : 218 sqm  
**View** : <https://www.magain.com.au/property/13-15-windsong-court-morphett-vale-sa/8423278>

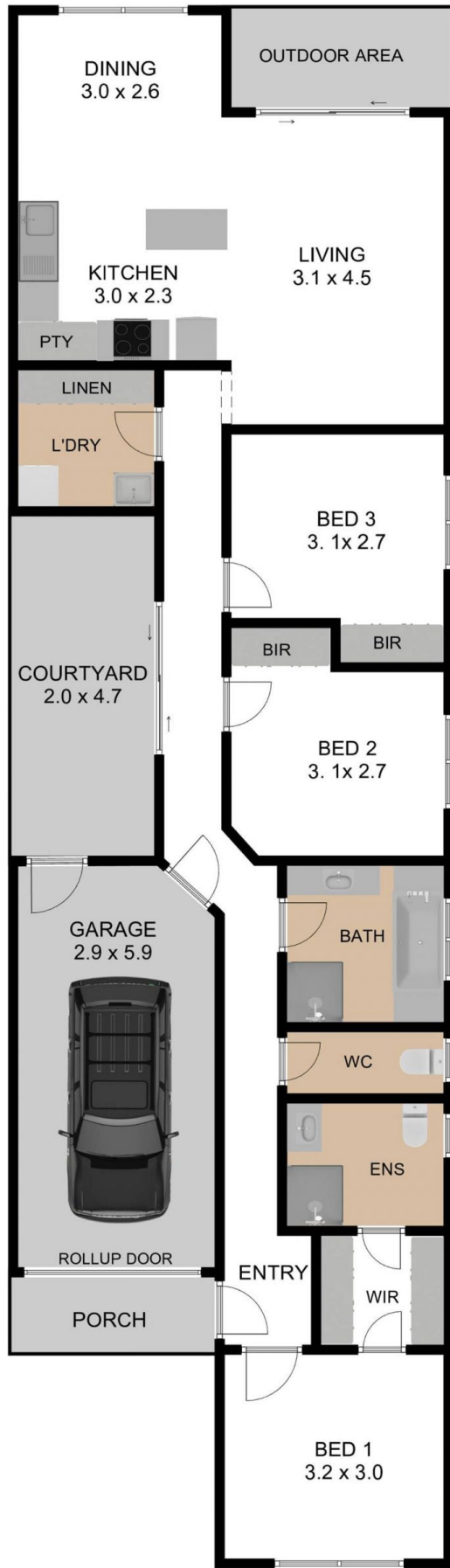


C|R

13/15 WINDSONG COURT, MORPHETT VALE SA 5162

TOTAL INTERNAL LIVING AREA : 101.70 M<sup>2</sup> GARAGE + PORCH : 20.10 M<sup>2</sup> GRAND TOTAL : 121.80 M<sup>2</sup>

THE FLOOR PLAN IS FOR ILLUSTRATION PURPOSE ONLY. MEASUREMENTS ARE APPROXIMATE AND INTERNAL. NOT TO SCALE.



C|R

13/15 WINDSONG COURT, MORPHETT VALE SA 5162

TOTAL INTERNAL LIVING AREA : 101.70 M<sup>2</sup> GARAGE + PORCH : 20.10 M<sup>2</sup> GRAND TOTAL : 121.80 M<sup>2</sup>

THE FLOOR PLAN IS FOR ILLUSTRATION PURPOSE ONLY. MEASUREMENTS ARE APPROXIMATE AND INTERNAL. NOT TO SCALE.