




MAGAIN



32/9 Ebenezer Place ADELAIDE SA

2  **1**  **1** 

City Realty is proud to provide you with the opportunity to secure one of the most outstanding apartments available in the East End of Adelaide, with a renovation fit for a King and Queen!

For those familiar with the East End Gardens precinct this home will set you apart from the rest and needs to be inspected to appreciate the class and quality of workmanship applied.

What sets this home apart:

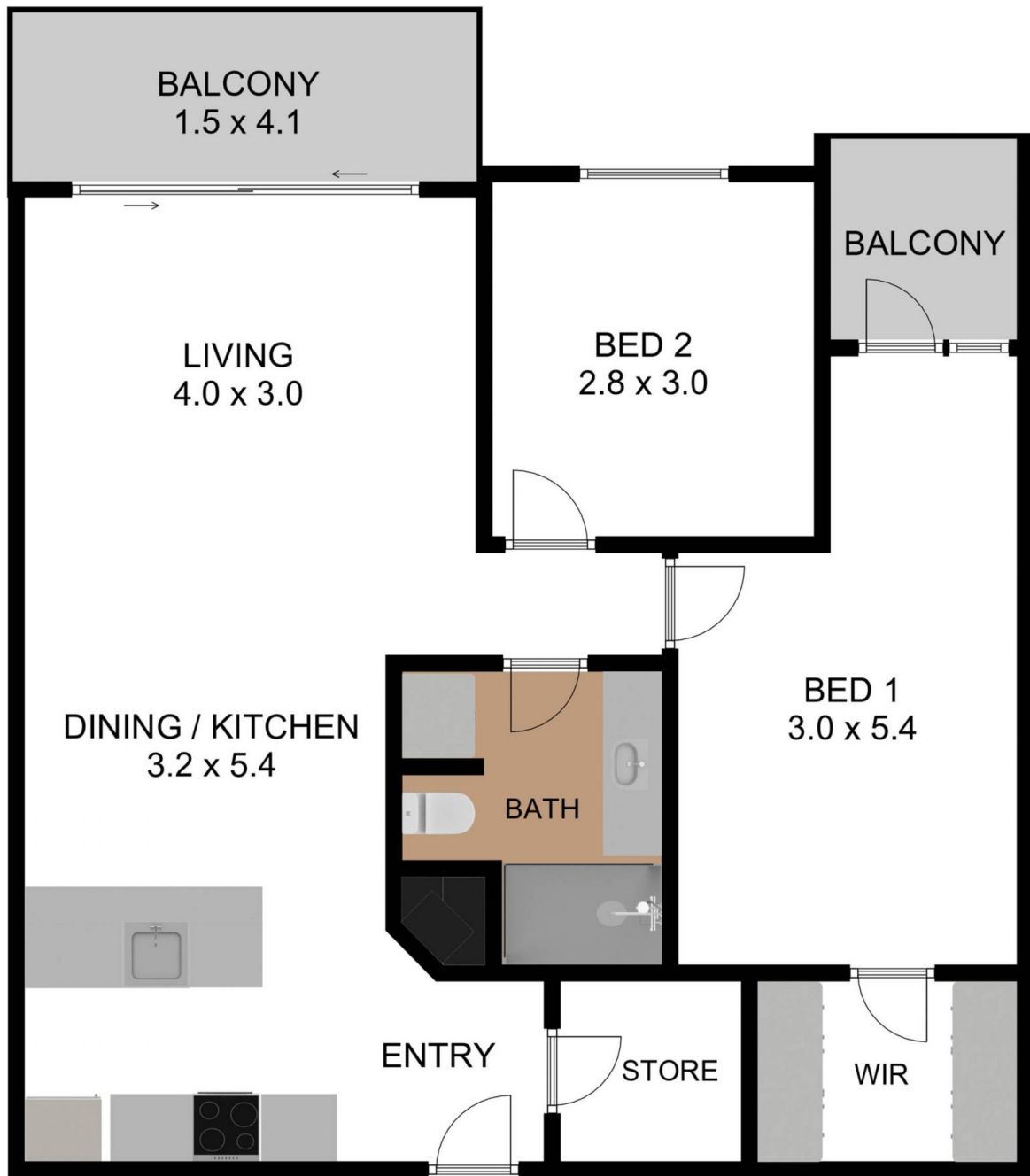
- * Top floor apartment with north facing windows (hello sunlight!).
- * Amazing balcony views for sunrise breakfasts or evening

[For full version visit the website](https://www.magain.com.au/property/32-9-ebenezer-place-adelaide-sa/8423280)

Type	: Apartment
Price	: \$ 545,000
Building Size	: 75 sqm
View	: https://www.magain.com.au/property/32-9-ebenezer-place-adelaide-sa/8423280

<https://www.magain.com.au>
Magain Real Estate

765 Marion Road Ascot Park SA
08 8277 1777



C|R

32/9 EBENEZER PLACE, ADELAIDE, SA 5000

TOTAL INTERNAL LIVING AREA : 76.10 M² BALCONY : 9.20 M² GRAND TOTAL : 85.40 M²

THE FLOOR PLAN IS FOR ILLUSTRATION PURPOSE ONLY. MEASUREMENTS ARE APPROXIMATE AND INTERNAL. NOT TO SCALE.



C|R

32/9 EBENEZER PLACE, ADELAIDE, SA 5000

TOTAL INTERNAL LIVING AREA : 76.10 M² BALCONY : 9.20 M² GRAND TOTAL : 85.40 M²

THE FLOOR PLAN IS FOR ILLUSTRATION PURPOSE ONLY. MEASUREMENTS ARE APPROXIMATE AND INTERNAL. NOT TO SCALE.