

# MAGAIN



2404/19 Frome Street ADELAIDE SA

1 1 1

The 'Adelaidean' is a Premium Residential Development with a sought-after East End location in the vibrant Rundle Street Precinct. The Adelaidean stands proud as Adelaide's new 'tallest' building and almost undoubtedly Adelaide's most stylish and classy apartment tower built to date.

**Type** : Apartment

**View** : <https://www.magain.com.au/property/240419-frome-street-adelaide-sa/8423281>

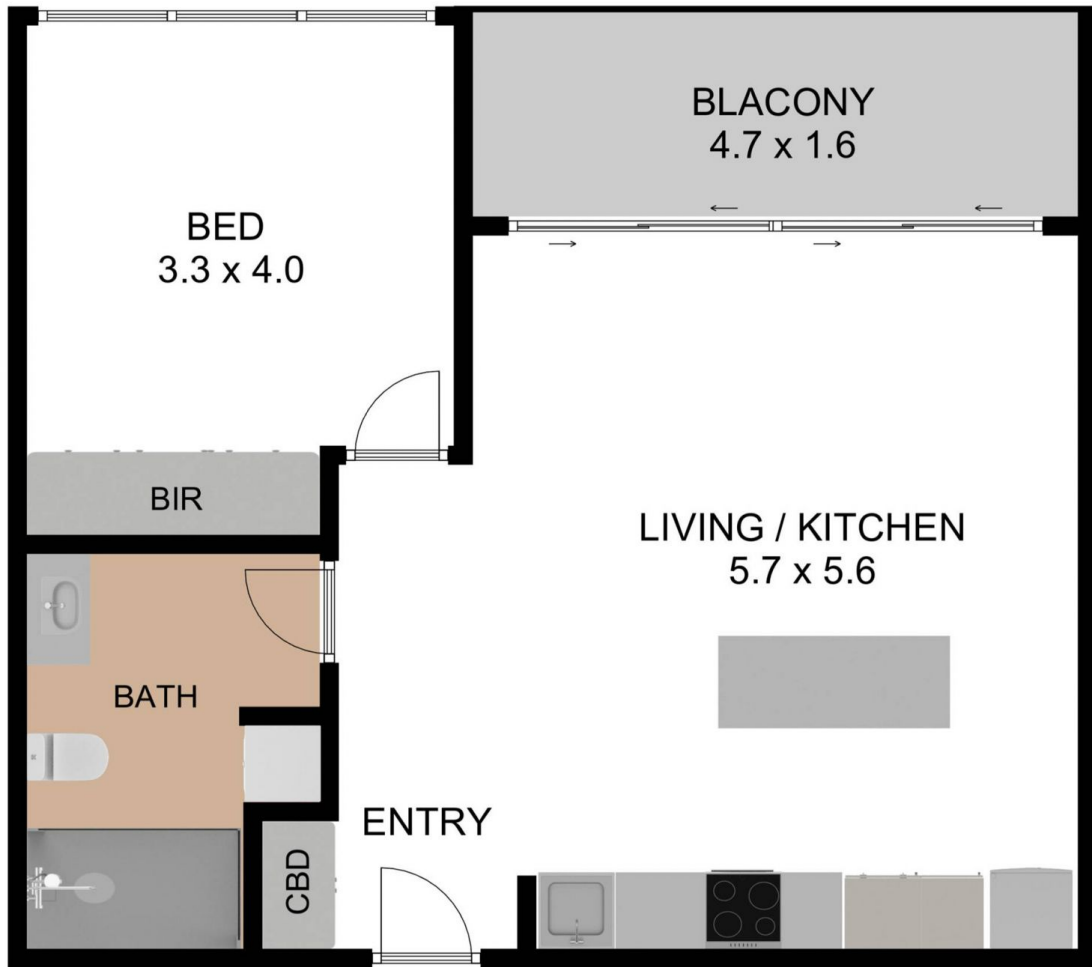
Near new, this spacious 1-bedroom apartment offers an exclusive city lifestyle. Positioned on the 24th floor to ceiling windows framing the amazing views over the West End, summer sunsets over the ocean and the North facing views over Adelaide Oval and the River Torrens.

\* Large bedroom with built-in robes for storing your latest fashions

[For full version visit the website](#)

<https://www.magain.com.au>  
Magain Real Estate

765 Marion Road Ascot Park SA  
08 8277 1777



C|R

2404/19 FROME STREET, ADELAIDE, SA 5000

TOTAL INTERNAL LIVING AREA : 52.50 M<sup>2</sup> BALCONY : 7.50 M<sup>2</sup> GRAND TOTAL : 60.00 M<sup>2</sup>

THE FLOOR PLAN IS FOR ILLUSTRATION PURPOSE ONLY. MEASUREMENTS ARE APPROXIMATE AND INTERNAL. NOT TO SCALE.



C|R

2404/19 FROME STREET, ADELAIDE, SA 5000

TOTAL INTERNAL LIVING AREA : 52.50 M<sup>2</sup> BALCONY : 7.50 M<sup>2</sup> GRAND TOTAL : 60.00 M<sup>2</sup>

THE FLOOR PLAN IS FOR ILLUSTRATION PURPOSE ONLY. MEASUREMENTS ARE APPROXIMATE AND INTERNAL. NOT TO SCALE.