

# MAGAIN



## 40 Chapman Drive ULEYBURY SA

1 1 5

Auction on site - 4pm 27th March

You'll feel like you're living in the country with Uleybury Winery, Tenafeate Creek Wines and One Tree Hill only minutes up the road.

Designed by the owner to suit a lifestyle, it's an incredibly light filled spacious home, universal rooms with views of its surroundings from every window.

With your imagination you could renovate this solid brick home, add extensions or perhaps you would rather demolish and build your dream home (STCC), there's a lot of land here!

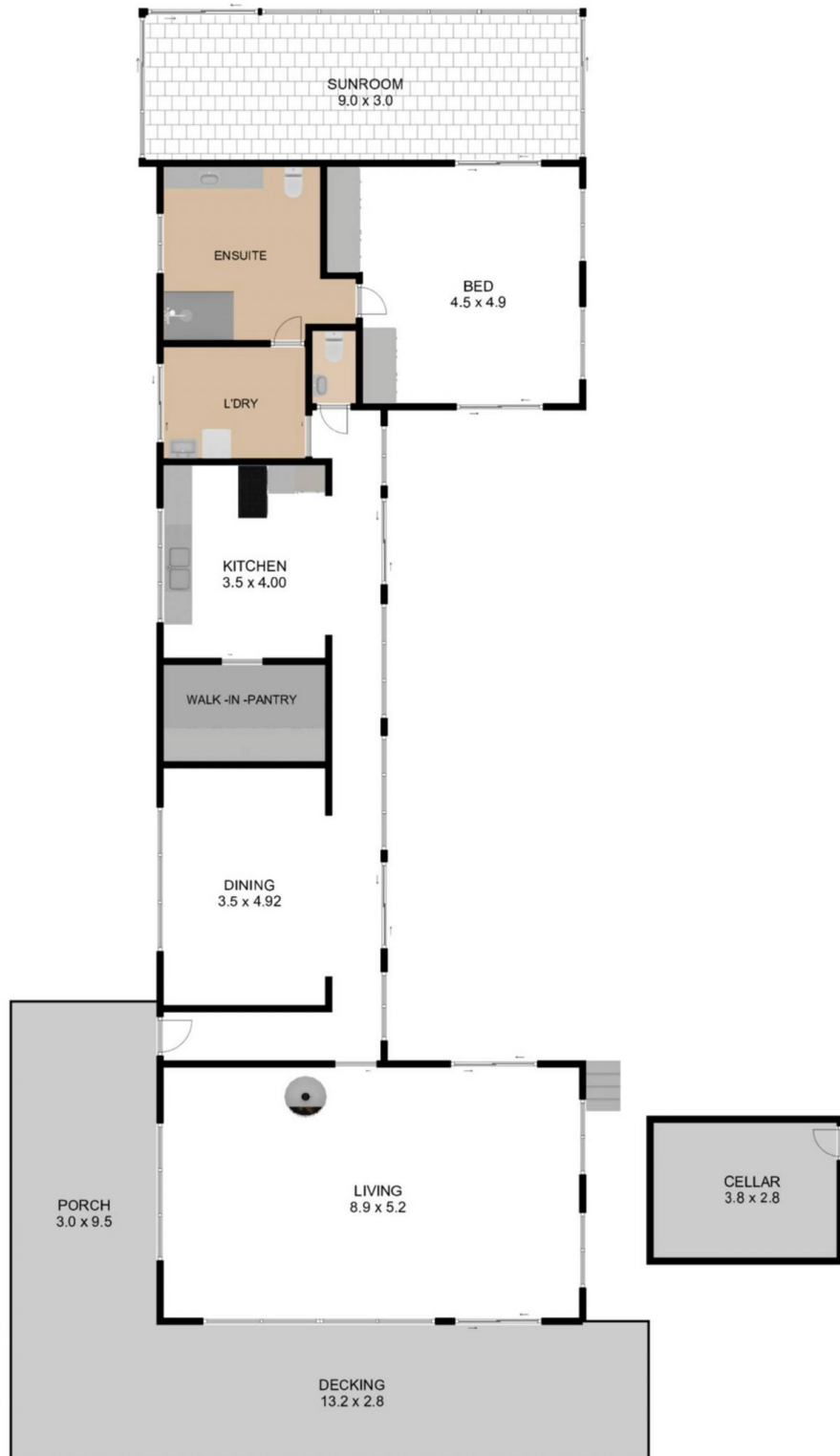
**Type** : House  
**Land Size** : 40000 sqm  
**View** : <https://www.magain.com.au/property/40-chapman-drive-uleybury-sa/8423298>

[For full version visit the website](https://www.magain.com.au/property/40-chapman-drive-uleybury-sa/8423298)

<https://www.magain.com.au>  
Magain Real Estate

765 Marion Road Ascot Park SA  
08 8277 1777





C|R

40 CHAPMAN DR, ULEYBURY SOUTH AUSTRALIA

TOTAL INTERNAL LIVING AREA : 179.00 M<sup>2</sup> PORCH + DECKING + CELLAR : 67.70 M<sup>2</sup> GRAND TOTAL : 246.70 M<sup>2</sup>

THE FLOOR PLAN IS FOR ILLUSTRATION PURPOSE ONLY. MEASUREMENTS ARE APPROXIMATE AND INTERNAL. NOT TO SCALE.



C|R

40 CHAPMAN DR, ULEYBURY SOUTH AUSTRALIA

TOTAL INTERNAL LIVING AREA : 179.00 M<sup>2</sup> PORCH + DECKING + CELLAR : 67.70 M<sup>2</sup> GRAND TOTAL : 246.70 M<sup>2</sup>

THE FLOOR PLAN IS FOR ILLUSTRATION PURPOSE ONLY. MEASUREMENTS ARE APPROXIMATE AND INTERNAL. NOT TO SCALE.