

# MAGAIN



7/41 Hurtle Square ADELAIDE SA

2 1 1

City Realty is proud to bring you the opportunity to secure this brilliantly renovated (2017) ground floor home, nestled in the quiet corner of Hurtle Square (otherwise known as 'The Forest of Dreams').

Positioned on street level in a tightly held strata group, with secure rear access for your car, this home will suit those who are looking for a bright and light modern unit with easy access and a private courtyard to keep the green twitch at bay without the endless maintenance of a large yard.

\*360 Virtual Tour available via the Photo Carousel\*

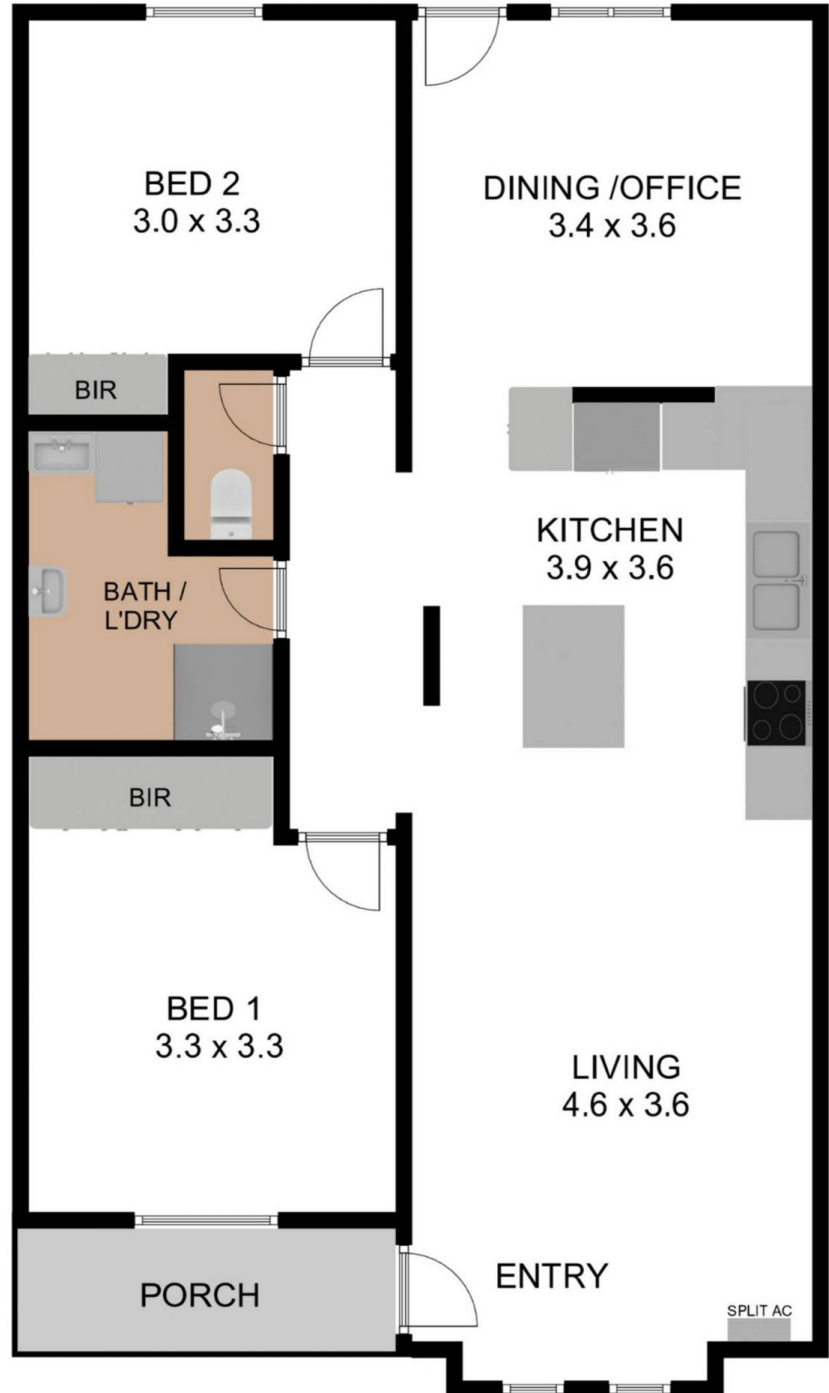
What you need to know:

[For full version visit the website](https://www.magain.com.au/property/74-1-hurtle-square-adelaide-sa/8423303)

**Type** : Block of Units  
**Building Size** : 90 sqm  
**Land Size** : 126 sqm  
**View** : <https://www.magain.com.au/property/74-1-hurtle-square-adelaide-sa/8423303>

<https://www.magain.com.au>  
Magain Real Estate

765 Marion Road Ascot Park SA  
08 8277 1777



C|R

7/41 HURTLE SQUARE, ADELAIDE

TOTAL INTERNAL LIVING AREA : 80.80 M<sup>2</sup> PORCH : 3.80 M<sup>2</sup> GRAND TOTAL : 84.60 M<sup>2</sup>

THE FLOOR PLAN IS FOR ILLUSTRATION PURPOSE ONLY. MEASUREMENTS ARE APPROXIMATE AND INTERNAL. NOT TO SCALE.



C|R

7/41 HURTLÉ SQUARE, ADELAIDE

TOTAL INTERNAL LIVING AREA : 80.80 M<sup>2</sup> PORCH : 3.80 M<sup>2</sup> GRAND TOTAL : 84.60 M<sup>2</sup>

THE FLOOR PLAN IS FOR ILLUSTRATION PURPOSE ONLY. MEASUREMENTS ARE APPROXIMATE AND INTERNAL. NOT TO SCALE.