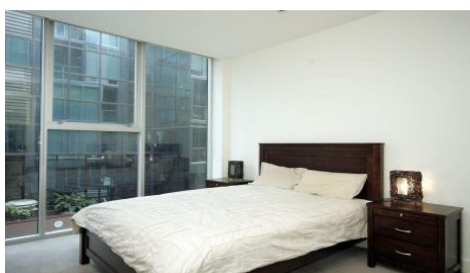


MAGAIN



108/211 Grenfell Street ADELAIDE SA

2  2  1 

STYLISH EAST END APARTMENT!

This apartment has it all, from its security conscious features, including swipe and intercom entrance to the building and lift and its lifestyle features, which include a state of the art gym, lap pool, spa and steam room.

The Why To Buy:-

2 Spacious bedrooms,

Master bedroom has w.i.r and ensuite

Ducted reverse cycle air conditioning

Spacious open plan dining / lounge,

Modern kitchen with gas cooking and Meile appliances,

Valuable fold away laundry,

1 undercroft carpark+ storage cage

This perfectly positioned, chic city pad is located right in the heart of Adelaide's CBD and popular East End precinct, it

Type : Apartment

View : <https://www.magain.com.au/property/108211-grenfell-street-adelaide-sa/8423334>

[For full version visit the website](https://www.magain.com.au)

<https://www.magain.com.au>
Magain Real Estate

765 Marion Road Ascot Park SA
08 8277 1777

108/211 Grenfell Street, Adelaide



Every care has been taken to verify the correctness of areas and details used in this leaflet. However no warranty or representative is given or made as to the correctness of information supplied, and neither the owners nor the agent can accept responsibility for errors or omissions. Imaging House Advertising, 168 Halifax Street, Adelaide 5000