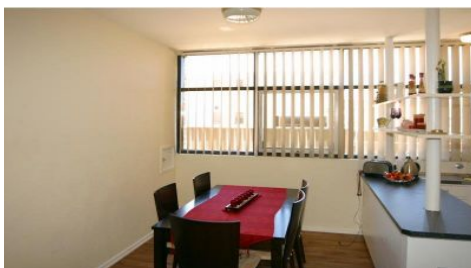


# MAGAIN



## 2/445 Anzac Highway CAMDEN PARK SA

2  1 

This tidy ground floor, updated unit will ideally suit 1st home buyers, downsizers and investors and is conveniently located between the beach & the city.

Features:-

2 bedrooms, main with built in robe

Stylish kitchen with adjacent meals area

Large separate lounge area

Outdoor patio area

Investors note, tenanted until 30/07/12 @ \$240.00 per week.

\* TENANTS ARE WILLING TO MOVE OUT IF BOUGHT BY OWNER OCCUPIER!

A great location close to shops, schools and with public transport right outside your door.

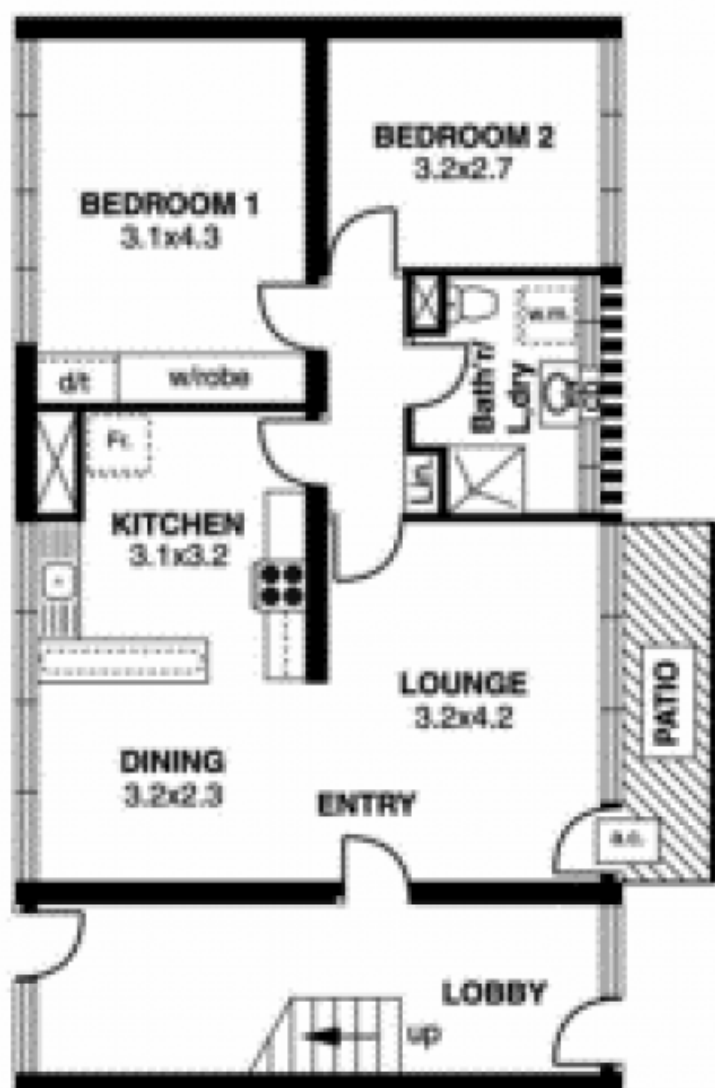
For any further information including inspection times

**Type** : Unit  
**Building Size** : 76 sqm  
**View** : <https://www.magain.com.au/property/24-45-anzac-highway-camden-park-sa/8423343>

[For full version visit the website](https://www.magain.com.au)

<https://www.magain.com.au>  
Magain Real Estate

765 Marion Road Ascot Park SA  
08 8277 1777



APPROXIMATE ESTIMATED AREA

Living	74.3 sq.m.
Patio	4.7 sq.m.
<b>TOTAL</b>	<b>79.0 sq.m.</b>