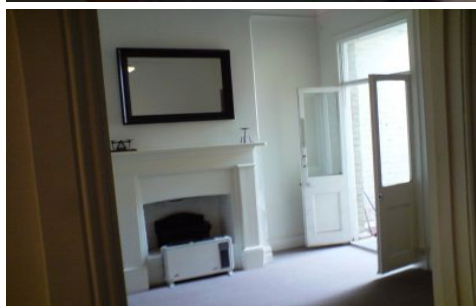


# MAGAIN



## 24 Gray Street ADELAIDE SA

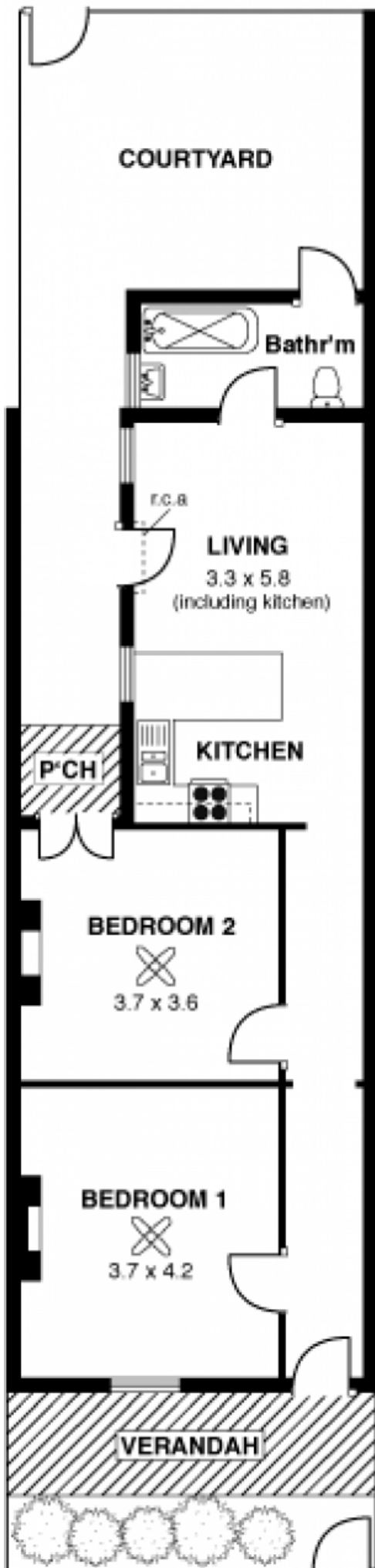
2  1 

CUTE CITY COTTAGE! They don't make them like this any more, circa 1910 single fronted cottage will suit 1st home buyers, City professionals & investors. With the proposed site for the new hospital only metres away at the end of the street there could be some possibilities to explore with consulting rooms etc, (stcc). Features include Torrens Titled 2 good sized bedrooms Updated kitchen with gas cooking Open plan dining/living Reverse cycle air conditioning Private rear courtyard valuable rear access Currently leased until 7th February @\$390.00 per week, with good tenants keen to renew. Perfectly positioned close to Universities, entertainment venues, and public transport in the thriving West End. For any further details including inspection times please contact, Andrew Downing, The City Specialist on 0404882311.

[For full version visit the website](#)

**Type** : House  
**Building Size** : 75 sqm  
**Land Size** : 120 sqm  
**View** : <https://www.magain.com.au/property/24-gray-street-adelaide-sa/8423382>

rear access



## 24 Gray Street, Adelaide

### APPROXIMATE ESTIMATED AREA

Living	72.2
Porch	1.8
Verandah	7.9
<hr/>	
TOTAL	81.9 sqm. app.

Every care has been taken to verify the correctness of areas and details used in this leaflet. However no warranty or representative is given or made as to the correctness of information supplied, and neither the owners nor the agent can accept responsibility for errors or omissions. Imaging House Advertising, 168 Halifax Street, Adelaide 5000