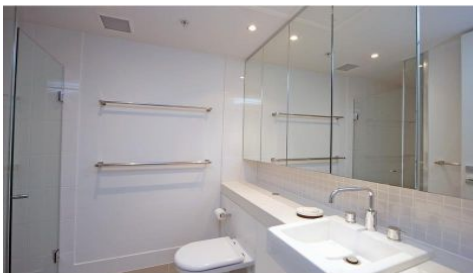


MAGAIN



Unit 505/211 Grenfell Street ADELAIDE SA

2 1 1

STYLISH, EXECUTIVE APARTMENT IN THE EAST END.

Perfectly positioned in the heart of the CBD, just 2 minutes walk to Rundle St, Mall and Parklands and has

- 2 good size bedrooms,
- Master bedroom has w.i.r and balcony access,
- Ducted reverse cycle air cond.
- Spacious open plan dining / lounge,
- Modern kitchen with gas cooking and Smeg appliances,
- Large balcony with stunning City views,
- Furniture package available
- Secure individual climate control wine storage
- 1 undercroft carpark with large separate storage cage,

This apartment has it all, from its security conscious features including swipe and intercom entrance to the building and lift and its lifestyle features, which include a

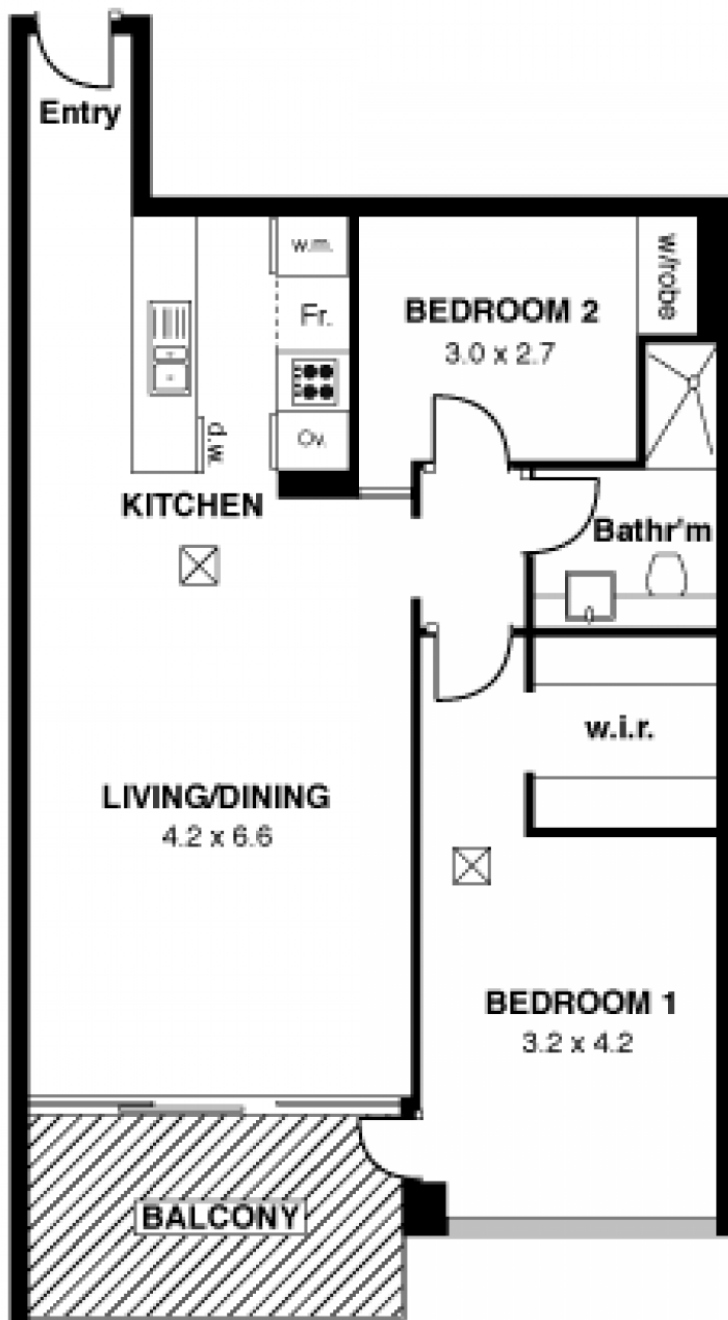
Type : Apartment
Building Size : 96 sqm
View : <https://www.magain.com.au/property/unit-505211-grenfell-street-adelaide-sa/8423401>

[For full version visit the website](https://www.magain.com.au)

<https://www.magain.com.au>
Magain Real Estate

765 Marion Road Ascot Park SA
08 8277 1777

505/ 211 Grenfell Street, Adelaide



APPROXIMATE ESTIMATED AREA

Living	87.9
Balcony	9.0
<hr/>	
TOTAL	96.9 sqm. app.

☒ Air Con. outlets

Every care has been taken to verify the correctness of areas and details used in this leaflet. However no warranty or representative is given or made as to the correctness of information supplied, and neither the owners nor the agent can accept responsibility for errors or omissions.

Imaging House Advertising, 168 Halifax Street, Adelaide 5000