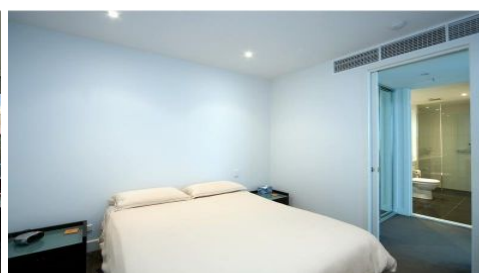


# MAGAIN



604/211 Grenfell Street ADELAIDE SA

1  1  1 

PENTHOUSE VIEWS WITHOUT THE PRICE TAG!

This Chic, modern apartment located on the top level, has stunning views over the city and hills and is especially magnificent at night when you get your own private light show.

Features & Benefits include:-

- 1 Spacious Bedroom
- Large open plan dining / lounge
- Designer kitchen with Miele appliances, including coffee maker
- Ceaser stone benchtops
- Sparkling bathroom
- Ducted reverse cycle air conditioning
- Video intercom access
- Private balcony with stunning views

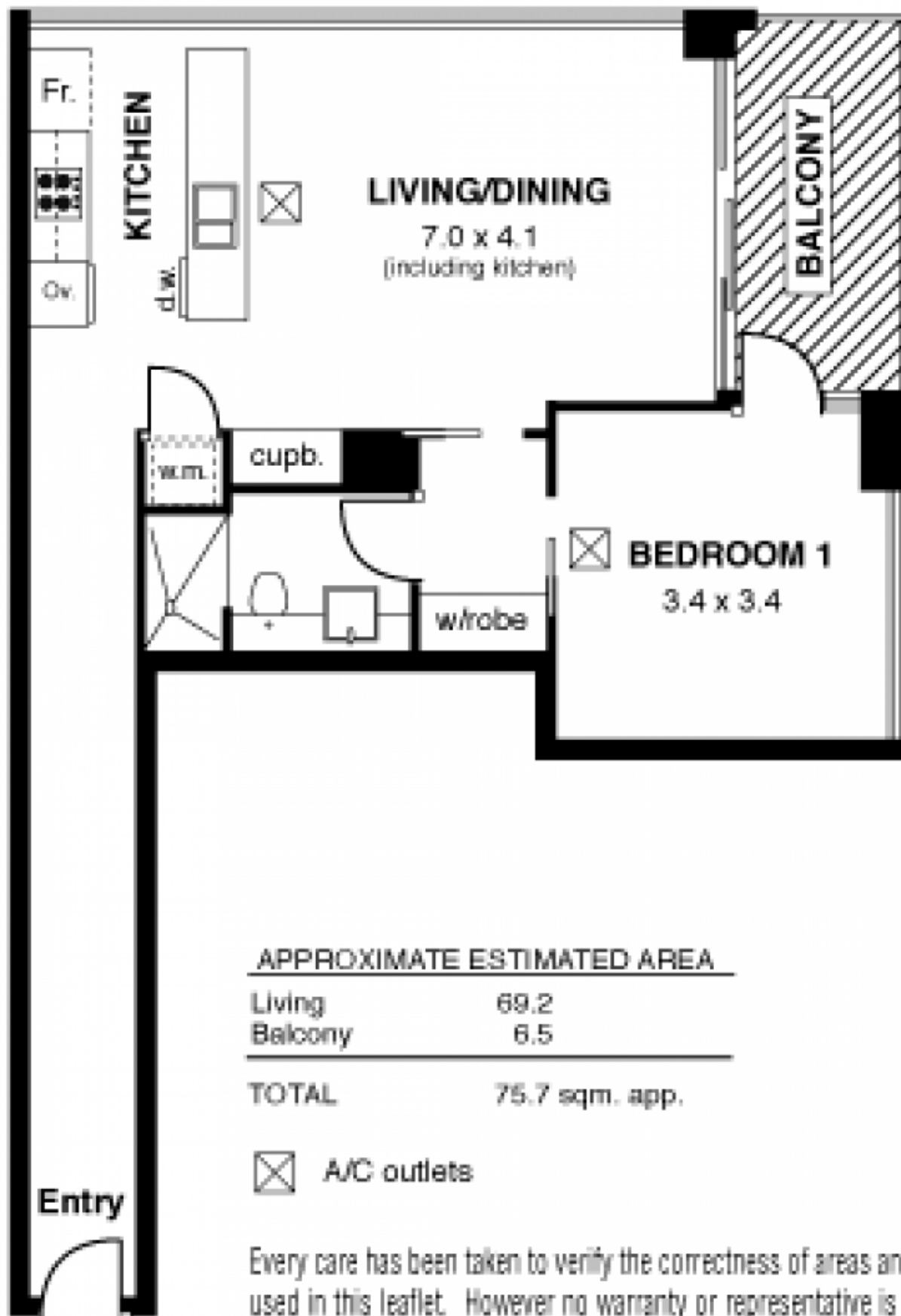
**Type** : Unit  
**Building Size** : 66 sqm  
**View** : <https://www.magain.com.au/property/604211-grenfell-street-adelaide-sa/8423431>

[For full version visit the website](https://www.magain.com.au)

<https://www.magain.com.au>  
Magain Real Estate

765 Marion Road Ascot Park SA  
08 8277 1777

604/ 211 Grenfell Street, Adelaide



APPROXIMATE ESTIMATED AREA

Living	69.2
Balcony	6.5
<hr/>	
TOTAL	75.7 sqm. app.

☒ A/C outlets

Every care has been taken to verify the correctness of areas and details used in this leaflet. However no warranty or representative is given or made as to the correctness of information supplied, and neither the owners nor the agent can accept responsibility for errors or omissions. Imaging House Advertising, 168 Halifax Street, Adelaide 5000