

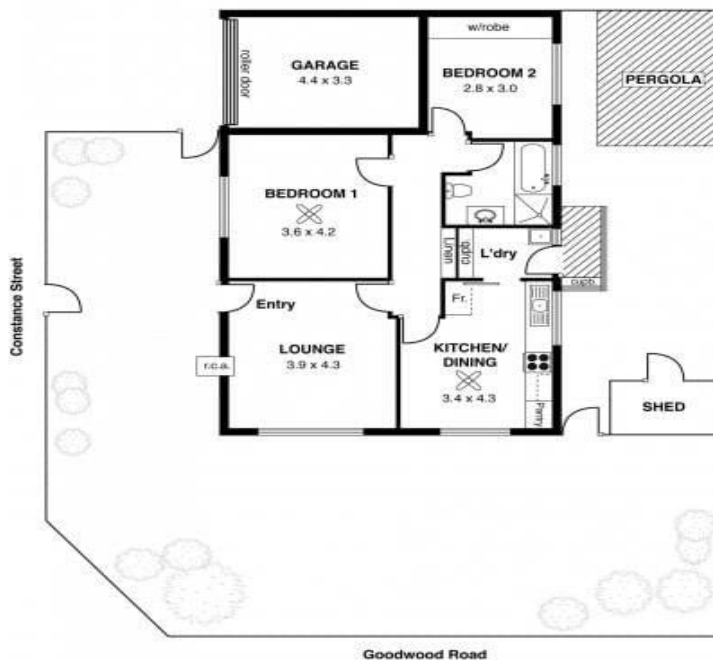
MAGAIN

Unit 1, 449 Goodwood Road, Westbourne Park

APPROXIMATE ESTIMATED AREA

Living	81.0
Porch	1.9
Pergola	11.1
Garage	15.6
TOTAL	109.6 sqm. app.

Every care has been taken to verify the correctness of areas and details used in this leaflet. However no warranty or representative is given or made as to the correctness of information supplied, and neither the owners nor the agent can accept responsibility for errors or omissions.
Imaging House Advertising, 168 Halifax Street, Adelaide 5000



1/449 Goodwood Road WESTBOURNE PARK SA

2 1 1

Fantastic Opportunity / Be Quick

- . 2 Generous Bedrooms
- . Built in wardrobe in bedroom 2
- . Well Appointed Kitchen / Meals
- . Main Bathroom with shower, bath toilet & vanity
- . Large lounge room
- . Separate Laundry
- . Carpeted Bedrooms
- . Security roller Shutters
- . Reverse Cycle Air Conditioner
- . Garden Shed
- . Lock - Up Garage
- . Secure private rear courtyard

Type : Unit

View : <https://www.magain.com.au/property/1449-goodwood-road-westbourne-park-sa/8423432>

[For full version visit the website](https://www.magain.com.au)

<https://www.magain.com.au>
Magain Real Estate

765 Marion Road Ascot Park SA
08 8277 1777