

MAGAIN



36/9 East Terrace ADELAIDE SA

2 2 1

STUNNING APARTMENT WITH PARKLAND VIEWS

This spacious and secure apartment is situated on the 5th floor in the tightly held South Eastern corner of the complex and offers beautiful parkland views.

Features and benefits include

- 2 Good sized bedrooms with built in robes
- Master has ensuite and private balcony
- Large open plan dining/lounge
- Modern kitchen with quality appliances including dishwasher
- Sparkling main bathroom
- Fully furnished with quality furniture
- Secure video intercom access
- Private balcony with spectacular views
- 1 secure undercroft carpark

Type : Unit

Building Size : 80 sqm

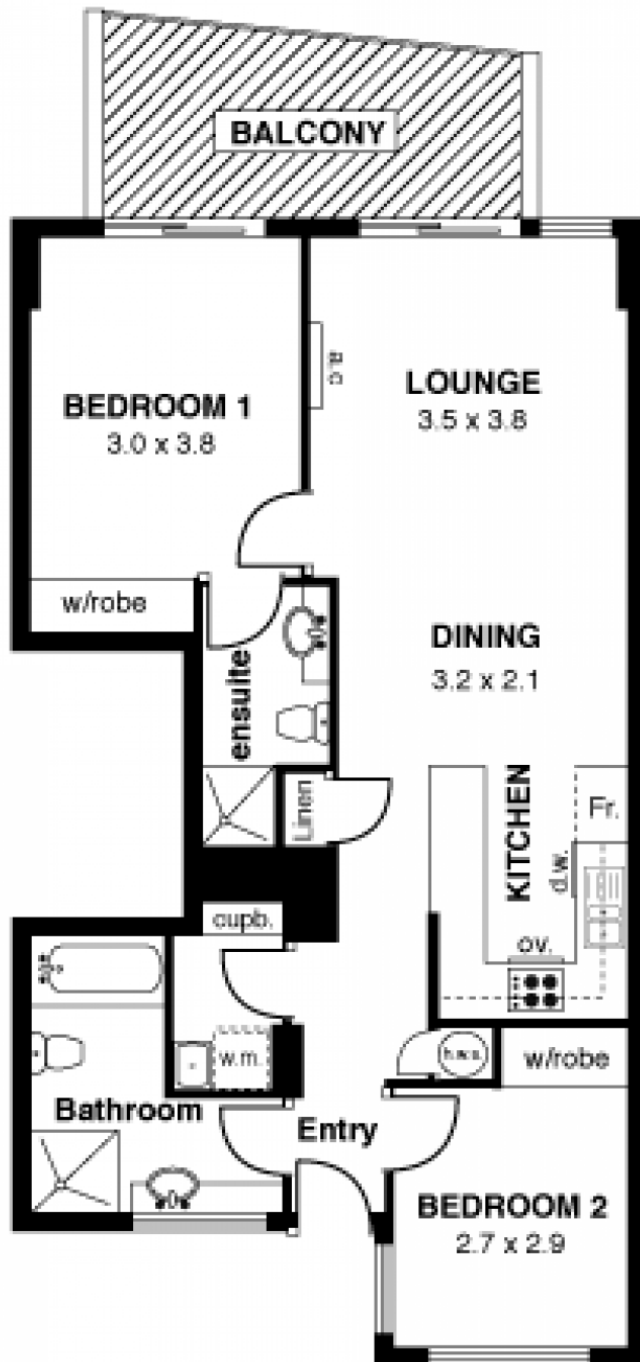
View : <https://www.magain.com.au/property/36-9-east-terrace-adelaide-sa/8423435>

[For full version visit the website](https://www.magain.com.au)

<https://www.magain.com.au>
Magain Real Estate

765 Marion Road Ascot Park SA
08 8277 1777

Unit 36/ 9 East Terrace, Adelaide



APPROXIMATE ESTIMATED AREA

Living	79.2
Balcony	9.4
TOTAL	87.6 sqm. app.

Every care has been taken to verify the correctness of areas and details used in this leaflet. However no warranty or representative is given or made as to the correctness of information supplied, and neither the owners nor the agent can accept responsibility for errors or omissions.

Imaging House Advertising, 168 Halifax Street, Adelaide 5000