

MAGAIN



49 Light Road COROMANDEL VALLEY SA

3  2  6 

Situated high on the corner of Light and Banes Road is where you'll find this gorgeous family home.

The stunning uninterrupted valley views are to die for!

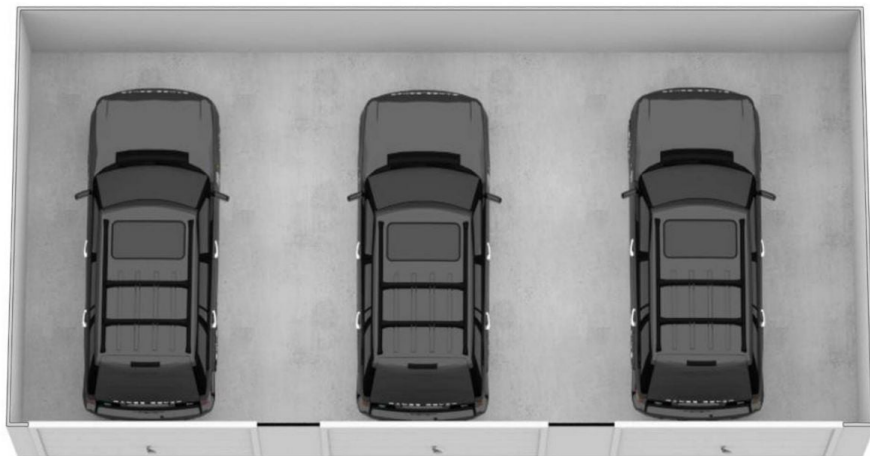
The location, well that makes this home even more attractive with walking trails, local playgrounds, schools, sporting facilities, public transport and more only moments away. Hop in the car and take a short drive to the local shops or an amazing dining experience at the Duck Inn.

Features too will love:

* Freshly painted throughout - white and bright to fit your choice of decor.

[For full version visit the website](https://www.magain.com.au/property/49-light-road-coromandel-valley-sa/8423458)

Type : House
Price : \$ 725,000
Building Size : 252 sqm
Land Size : 1099 sqm
View : <https://www.magain.com.au/property/49-light-road-coromandel-valley-sa/8423458>



C|R
CITY REALTY

49 LIGHT ROAD, COROMANDEL VALLEY SA 5051

131.90 M²

INTERNAL AREA

63.80 M²

GARAGE

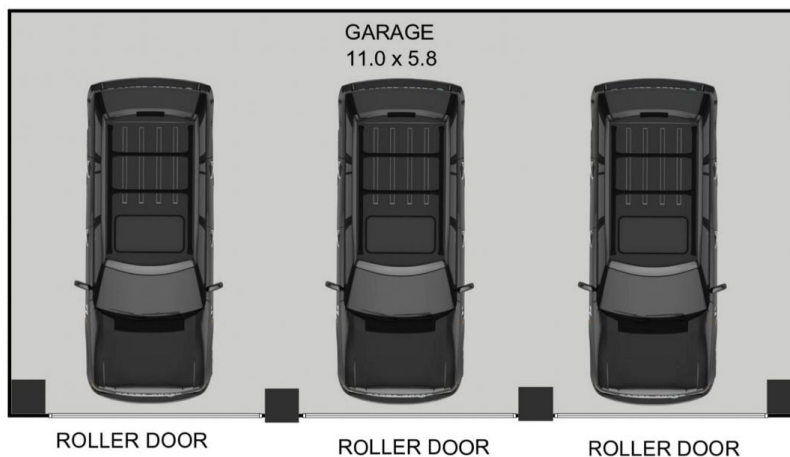
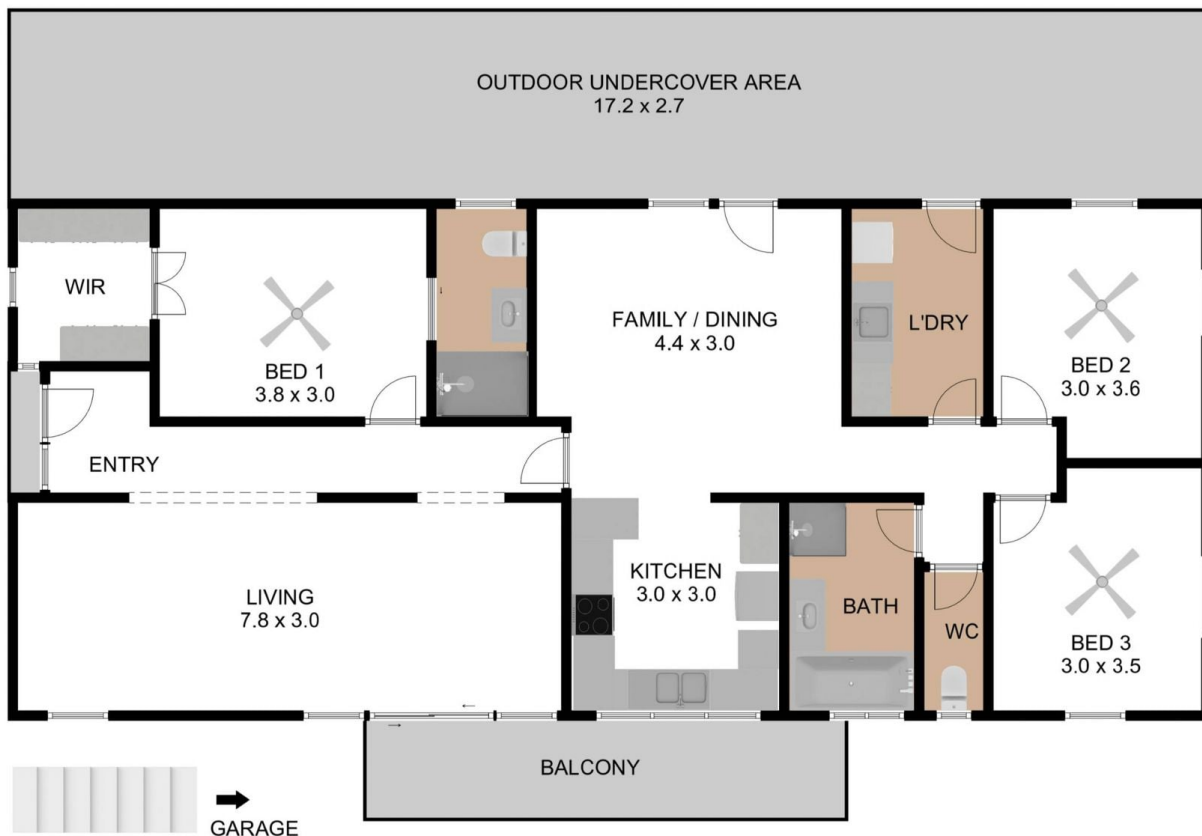
56.40 M²

OTHER OUTDOOR AREA

252.10 M²

GRAND TOTAL

THE FLOOR PLAN IS FOR ILLUSTRATION PURPOSE ONLY. MEASUREMENTS ARE APPROXIMATE AND INTERNAL. NOT TO SCALE © BREP



C|R
CITY REALTY

49 LIGHT ROAD, COROMANDEL VALLEY SA 5051

131.90 M²
INTERNAL AREA

63.80 M²
GARAGE

56.40 M²
OTHER OUTDOOR AREA

252.10 M²
GRAND TOTAL

THE FLOOR PLAN IS FOR ILLUSTRATION PURPOSE ONLY. MEASUREMENTS ARE APPROXIMATE AND INTERNAL. NOT TO SCALE © BREP