

# MAGAIN



## 22 Parker Street ANGLE PARK SA

3 2 1

This great family home is located on 552sqm of land!

Located in the new area of Angle Park, close to Woodville Gardens Primary School, Arndale Shopping Centre, golf course and public transport.

**Type** : House

**View** : <https://www.magain.com.au/property/22-parker-street-angle-park-sa/8423495>

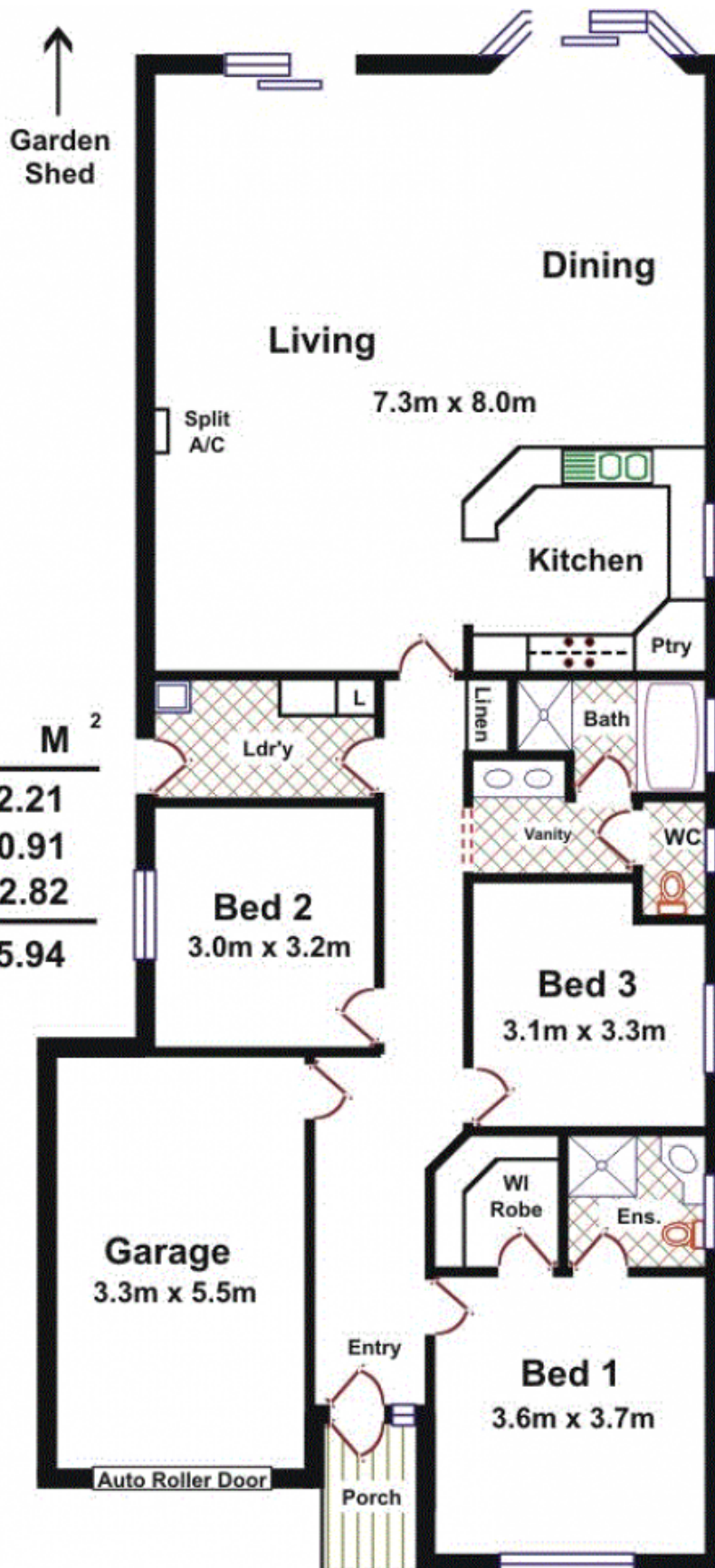
Why you will love this property:

- 3 good size bedrooms
- Master bedroom with walk in robe and ensuite
- Kitchen with gas cooktop and corner pantry
- Huge open plan living with R/C split system and two glass sliding doors
- 3 way bathroom with separate bath
- Large laundry with linen cupboard and clothes hamper
- Low maintenance tiled floors in living areas

[For full version visit the website](https://www.magain.com.au)

<https://www.magain.com.au>  
Magain Real Estate

765 Marion Road Ascot Park SA  
08 8277 1777



Area	M <sup>2</sup>
Living	142.21
Garage	20.91
Porch	2.82
<b>Total Approx</b>	<b>165.94</b>

Please Note: Every care has been taken to verify the correctness of the areas and details used in this leaflet. No warranty or representation is given or made as to the correctness of the information supplied and neither the owners, illustrator nor the Agents can accept responsibility for errors or omissions. The sketch is for illustration purposes only and intending purchasers should satisfy themselves independently regarding sizes, layout and location of the property. Please check with local council that all structures are approved by council.