

MAGAIN



35A Hallett Street ADELAIDE SA

2  1  1 

Stylish Two Level Townhouse!

Quality built and classy in design, this modern built townhouse ticks all the boxes in trendy low maintenance living. Where this stunning property stands out is its user friendly floor plan with an emphasis on indoor/outdoor entertaining plus the practicality of ground floor living, laundry, 2nd WC and secure front & rear entry. Not too mention its location in the quiet, tree lined, one way Hallett Street surrounded by Heritage Cottages!

The Why To Buy :-

2 Double bedrooms with floor to ceiling mirrored built ins in both

Spacious living & dining

Funky urban kitchen with stainless bench tops, splashback & stainless steel appliances

Type : Townhouse

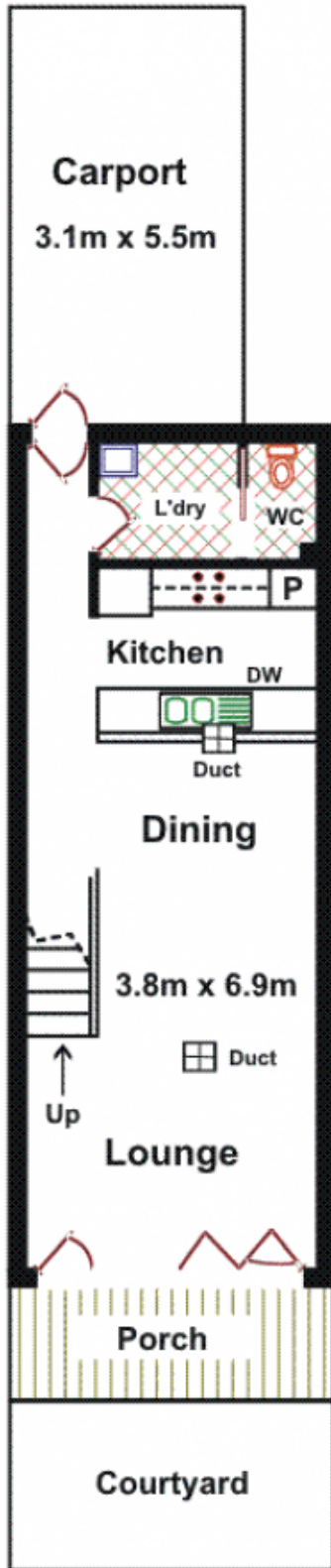
Building Size : 128 sqm

View : <https://www.magain.com.au/property/35-a-hallett-street-adelaide-sa/8423498>

[For full version visit the website](https://www.magain.com.au)

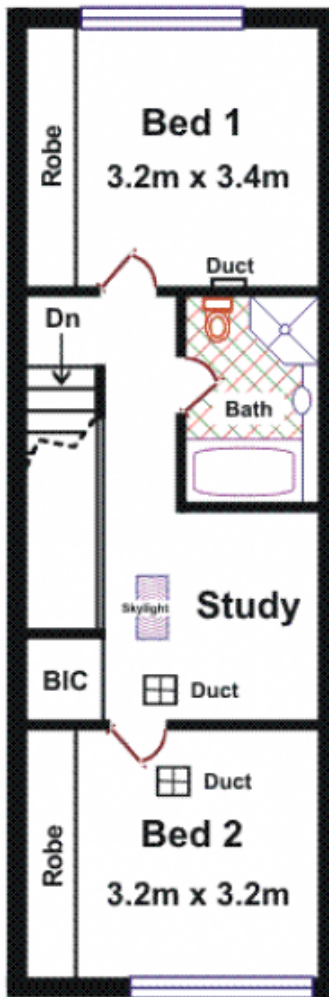
<https://www.magain.com.au>
Magain Real Estate

765 Marion Road Ascot Park SA
08 8277 1777



Lower Floor

Area	M ²
Lower Floor	49.05
Upper Floor	55.73
Carport	17.00
Porch	6.45
Courtyard	8.51
Total Approx	136.74



Upper Floor

Please Note: Every care has been taken to verify the correctness of the areas and details used in this leaflet. No warranty or representation is given or made as to the correctness of the information supplied and neither the owners, illustrator nor the Agents can accept responsibility for errors or omissions. The sketch is for illustration purposes only and intending purchasers should satisfy themselves independently regarding sizes, layout and location of the property. Please check with local council that all structures are approved by council.