




MAGAIN



11/22 Liberman Close ADELAIDE SA

2  2  1 

Don't miss your opportunity to secure an amazing apartment in this tightly held address. "The Square" is Conveniently located in the Garden East Precinct within easy walking distance of Rundle Street cafes and restaurants, Rundle Mall, Hospitals, Universities, the Park lands and the attractions of City Centre. This apartment is well suited for young professionals, investors or retirees looking to downsize. When convenience is paramount to your needs and a close second is quality and spacious living, then this is the property for you.

Type : Apartment

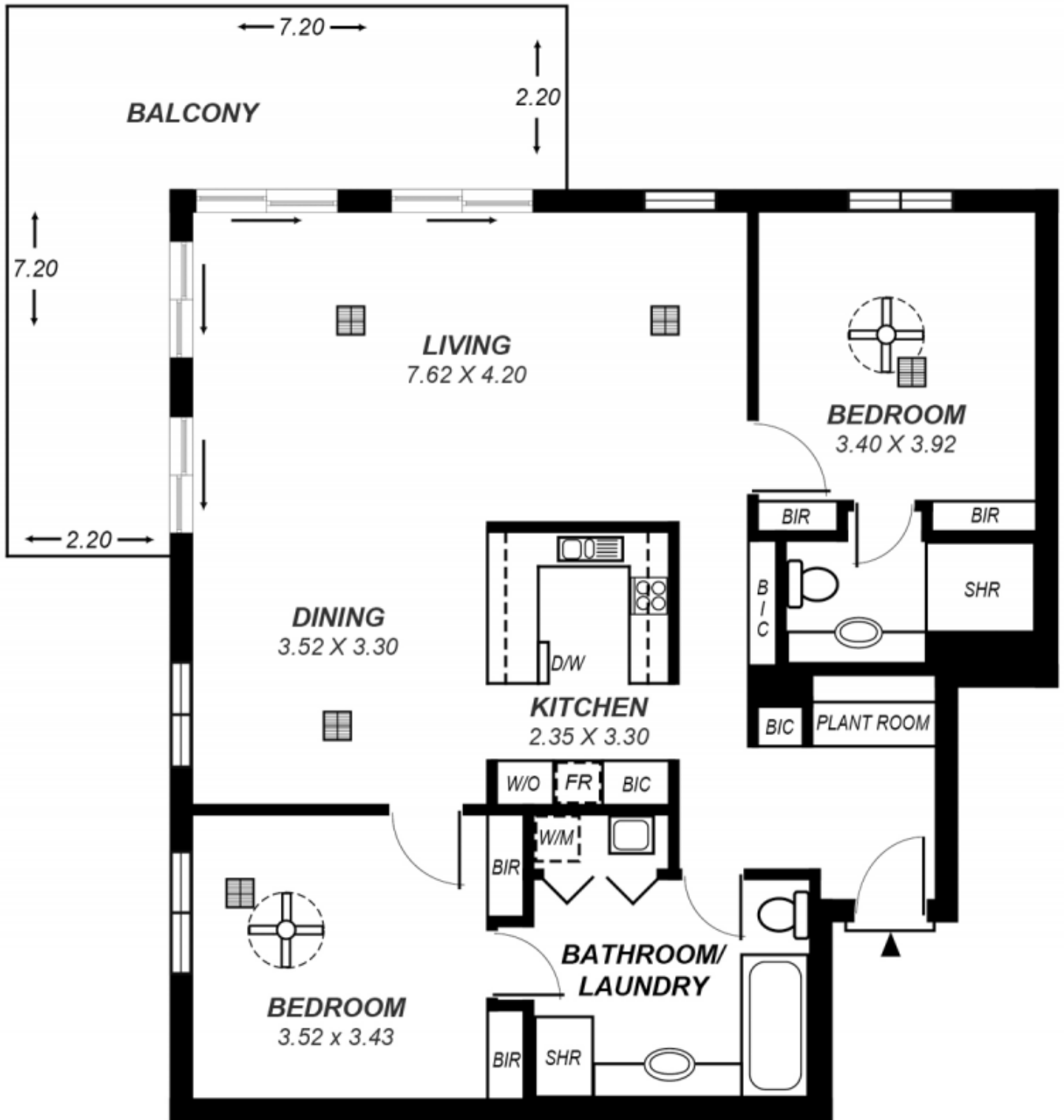
View : <https://www.magain.com.au/property/1122-liberman-close-adelaide-sa/8423576>

- This 2 bedroom apartment offers:
- Sought after south west orientation
- Master bedroom with built in robes and en suite
- Large second bedroom with built in robes and access

[For full version visit the website](#)

<https://www.magain.com.au>
Magain Real Estate

765 Marion Road Ascot Park SA
08 8277 1777



*This drawing is for illustration purposes only .
 All measurements are approximate and details intended
 to be relied upon should be independently verified.*