

# MAGAIN



1/41 Kintore Street MILE END SA

2  1  2 

Large Ground Floor Unit!

Spacious & updated, this solid brick unit is more like a homette. Being the front unit in this neat and well maintained group of six affords the added bonus of extra light through-out. Will ideally suit 1st home buyers, downsizers or investors.

The Why To Buy:-

- 2 Good size double bedrooms
- Large open lounge/dining area
- Tidy functional kitchen with gas
- Reverse cycle air conditioning
- Secure roller shutters on all external windows
- Separate laundry
- Neat & tidy through - out
- Low strata fees

**Type** : Unit

**Building Size** : 99 sqm

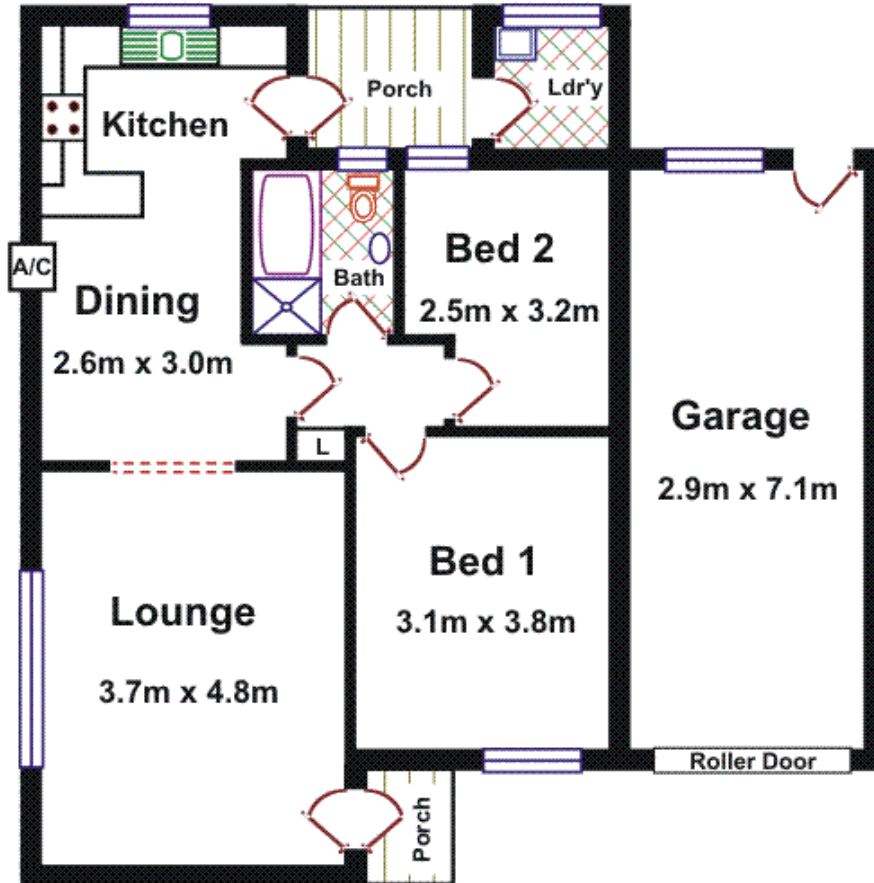
**View** : <https://www.magain.com.au/property/14-1-kintore-street-mile-end-sa/8423585>

[For full version visit the website](https://www.magain.com.au)

<https://www.magain.com.au>  
Magain Real Estate

765 Marion Road Ascot Park SA  
08 8277 1777

| Area                | M <sup>2</sup> |
|---------------------|----------------|
| Living              | 70.85          |
| Garage              | 23.43          |
| Porch               | 4.99           |
| <b>Total Approx</b> | <b>99.27</b>   |



Please Note: Every care has been taken to verify the correctness of the areas and details used in this leaflet. No warranty or representation is given or made as to the correctness of the information supplied and neither the owners, illustrator nor the Agents can accept responsibility for errors or omissions. The sketch is for illustration purposes only and intending purchasers should satisfy themselves independently regarding sizes, layout and location of the property. Please check with local council that all structures are approved by council.