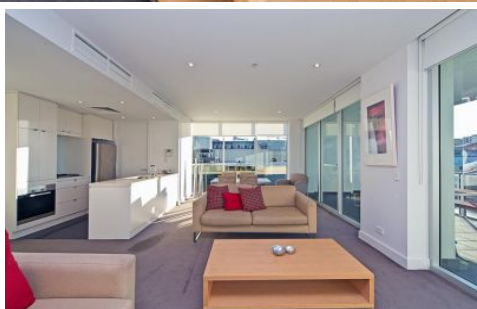


# MAGAIN



603/211 Grenfell Street ADELAIDE SA

2  2  2 

Excellence In The East End!

This stunning high quality apartment holds pride of position in the popular Domain apartments. A corner location on the top level affording a Northerly aspect with breath taking 270 degree views over the city & hills. The perfect City residence or investment has been loaded up with many extras and is perfectly positioned to take advantage of our beautiful City.

The Why To Buy:-

2 Large double bedrooms both with built ins

Master bedroom has ensuite

Large light filled living/dining area with access to double sized balcony

Elite kitchen with Caesar stone bench tops, and Miele appliances

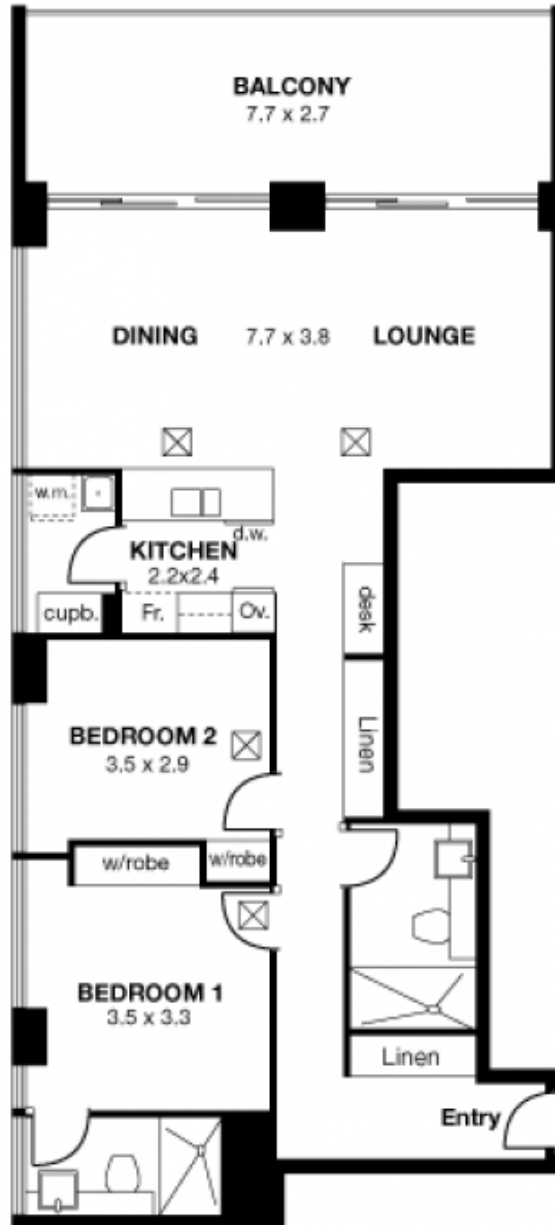
**Type** : Apartment

**View** : <https://www.magain.com.au/property/603211-grenfell-street-adelaide-sa/8423593>

[For full version visit the website](https://www.magain.com.au)

<https://www.magain.com.au>  
Magain Real Estate

765 Marion Road Ascot Park SA  
08 8277 1777



*603/211 Grenfell Street, Adelaide*

APPROXIMATE ESTIMATED AREA

Living	102.6
Balcony	20.8
<b>TOTAL</b>	<b>123.4 sqm. app.</b>

☒ air con. outlets

Every care has been taken to verify the correctness of areas and details used in this leaflet. However no warranty or representative is given or made as to the correctness of information supplied, and neither the owners nor the agent can accept responsibility for errors or omissions.  
 Imaging House Advertising, 168 Halifax Street, Adelaide 5000