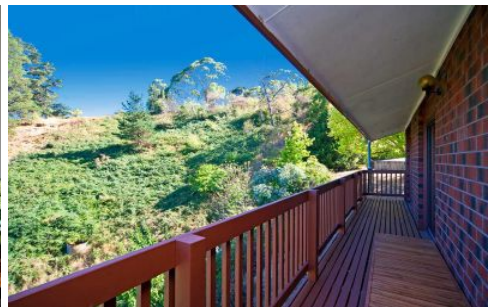


# MAGAIN



216 Norton Summit Road NORTON SUMMIT SA

4 2 2

VALLEY VIEWS TO THE CITY SKYLINE AND SEA

Your private sanctuary in the hills sits on approx 8.5 acres.

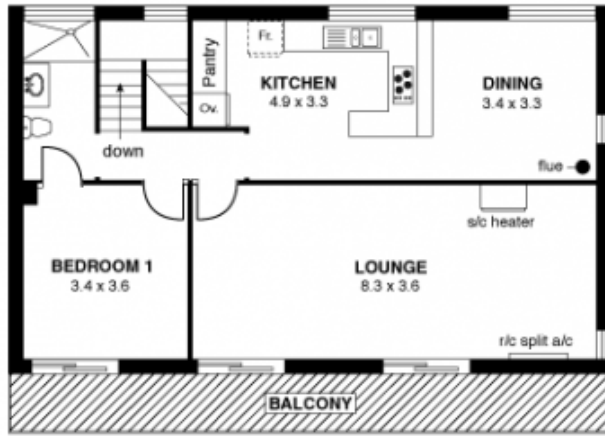
- 2 Level solid brick 4 bedroom family home
- Massive lounge with balcony views over the city.
- Large family / games room, ideal entertaining area
- Solid timber casual-country kitchen with dining
- 2 drawer dishwasher and ample cupboard space
- Master bedroom with en-suite, views and balcony access
- 3 Bedrooms with serene outlooks
- R/C Air-conditioning and 2 combustion heaters
- Freshly painted
- Solar power (7 panels) 1.2Kw

**Type** : House

**View** : <https://www.magain.com.au/property/216-norton-summit-road-norton-summit-sa/8423604>

[For full version visit the website](https://www.magain.com.au)

First Floor



Ground Floor



27 Norton Summitt Road, Norton Summitt

APPROXIMATE ESTIMATED AREA

|              |      |
|--------------|------|
| Ground Floor | 94.5 |
| First Floor  | 94.5 |
| Balcony      | 15.3 |
| Carport      | 21.0 |
| Garage       | 39.0 |

TOTAL 264.5 sqm. app.

Every care has been taken to verify the correctness of areas and details used in this leaflet. However no warranty or representative is given or made as to the correctness of information supplied, and neither the owners nor the agent can accept responsibility for errors or omissions.  
Imaging House Advertising, 168 Halifax Street, Adelaide 5000

