

# MAGAIN



## 73 South Terrace ADELAIDE SA

3 2 3

### A Modern Masterpiece With Parkland Frontage & Lift

This distinctive architecturally designed residence offers versatile and adaptive spaces that typify low maintenance inner city living. Three luxurious levels of Torrens title living incorporating an eclectic mix of polished concrete, stunning hardwood floors, Stainless Steel benches, high quality fixtures and fittings with high tech features throughout. Huge picture windows on all levels afford a stunning panoramic backdrop as well as an abundance of natural light.

### The Why To Buy:-

Expansive living & dining areas with polished Hardwood floors

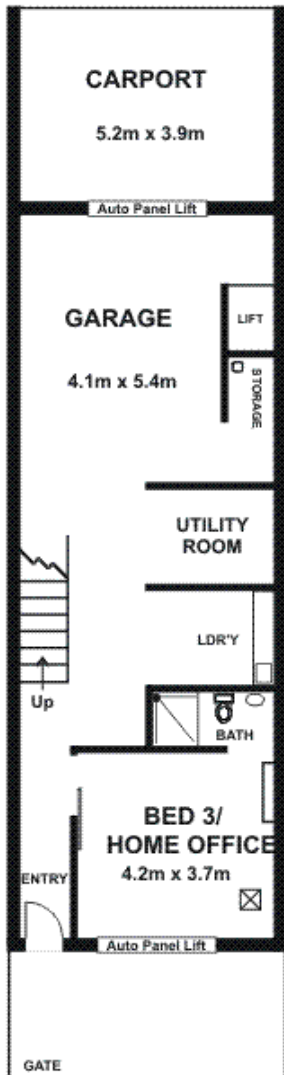
[For full version visit the website](https://www.magain.com.au/property/73-south-terrace-adelaide-sa/8423641)

<b>Type</b>	: House
<b>Building Size</b>	: 349 sqm
<b>Land Size</b>	: 177 sqm
<b>View</b>	: <a href="https://www.magain.com.au/property/73-south-terrace-adelaide-sa/8423641">https://www.magain.com.au/property/73-south-terrace-adelaide-sa/8423641</a>

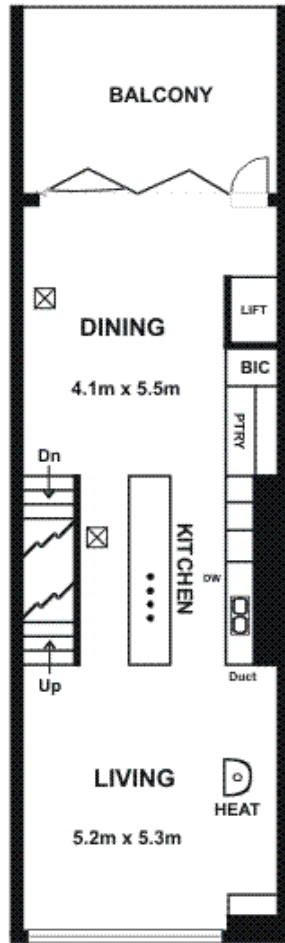
<https://www.magain.com.au>  
Magain Real Estate

765 Marion Road Ascot Park SA  
08 8277 1777

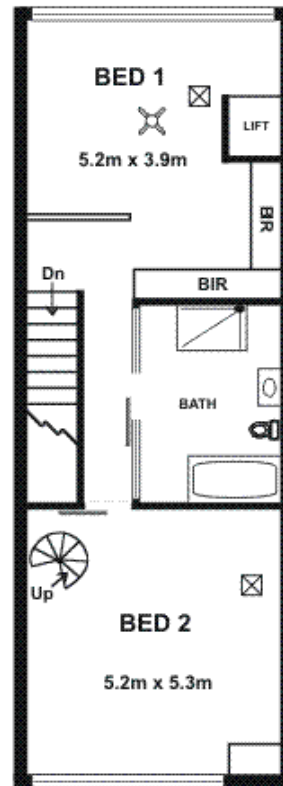
**EXTRA PARKING SPACE**



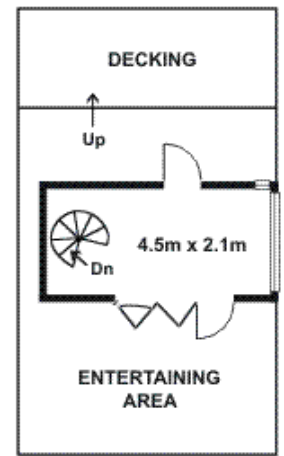
**GROUND FLOOR**



**FIRST FLOOR**



**SECOND FLOOR**



**ROOFTOP**

Ground Floor/Carport	107.16sqm
First Floor/Balcony	107.16sqm
Second Floor	88.07sqm
Rooftop Level	46.69sqm
<b>Total</b>	<b>Approx. 349.08sqm</b>