




# MAGAIN



**6/18 Bewes Street ADELAIDE SA**

**2**  **1**  **1** 

This stylish & spacious (87sqm approx) low maintenance property is in a great central location between Pulteney and Hutt Streets and will appeal to first home buyers, investors city professionals, retirees, students or as a city lock up and leave option.

**Type** : Apartment  
**Building Size** : 85 sqm  
**View** : <https://www.magain.com.au/property/618-bewes-street-adelaide-sa/8423692>

**The Why To Buy:-**

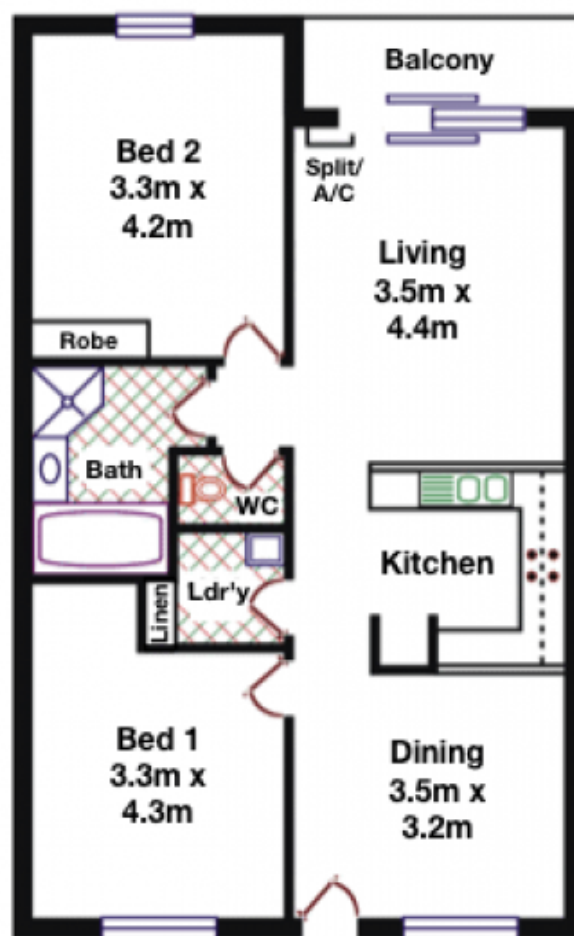
- 2 large bedrooms, main has built in robe
- Spacious lounge & dining areas
- Stylish floating floorboards throughout
- Updated central kitchen with ample cupboards
- Renovated bathroom
- Freshly painted throughout in neutral tones
- Separate laundry & toilet

[For full version visit the website](https://www.magain.com.au)

<https://www.magain.com.au>  
Magain Real Estate

765 Marion Road Ascot Park SA  
08 8277 1777

Area	M2
Living Balcony	83.21 4.40
<b>Total Approx.</b>	<b>87.61</b>



**On Site Carport**

Please note: Every care has been taken to verify the correctness of the areas and details used in this leaflet. No warranty or representation is given or made as to the correctness of the information supplied and neither the owners, illustrator nor the Agents can accept responsibility for errors or omissions. The sketch is for illustration purposes only and intending purchasers should satisfy themselves independently regarding sizes, layout and location of the property. Please check with local council that all structures are approved by council.