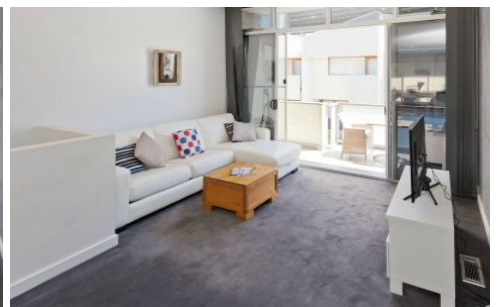


MAGAIN



28a Symonds Place ADELAIDE SA

2 1 2

This Street fronted, well appointed townhouse built in 2004 will appeal to city professionals, first home buyers and investors. Great cosmopolitan location between Halifax & Gilles Streets affording only a short walk to some of Adelaide's best restaurants and cafe's and close to the Central Markets, schools, Universities and public transport.

The Why To Buy:-

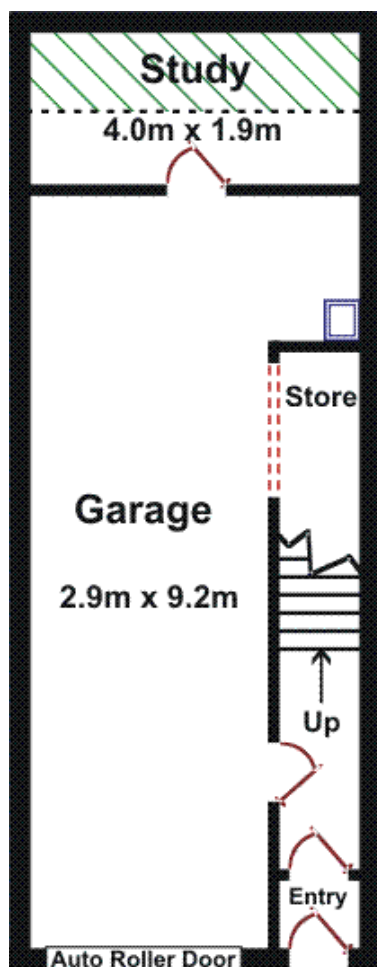
- 2 Generous sized bedrooms, both with built ins
- Spacious open plan dining/ lounge
- Stylish modern kitchen with dishwasher and insinkerator
- Sparkling bathroom & separate powder room
- Ducted, zoned reverse cycle air conditioning
- Secure intercom access & alarm system
- Separate study or storage room
- Private sun drenched balcony

Type : Townhouse
Building Size : 143 sqm
Land Size : 51 sqm
View : <https://www.magain.com.au/property/28a-symonds-place-adelaide-sa/8423709>

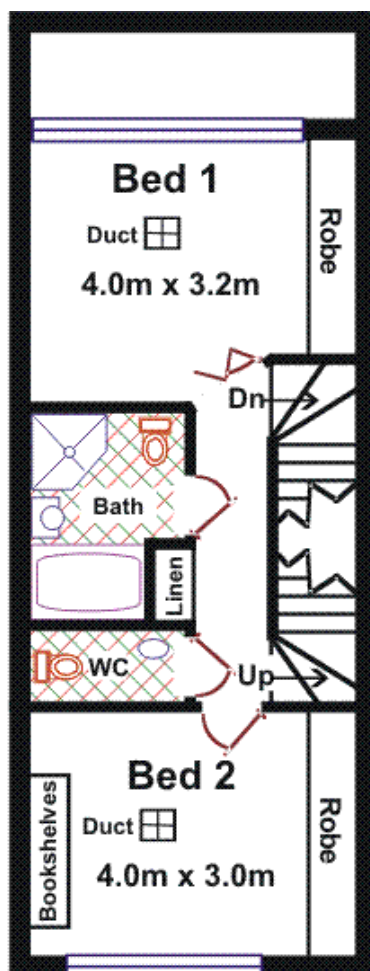
[For full version visit the website](https://www.magain.com.au/property/28a-symonds-place-adelaide-sa/8423709)

<https://www.magain.com.au>
Magain Real Estate

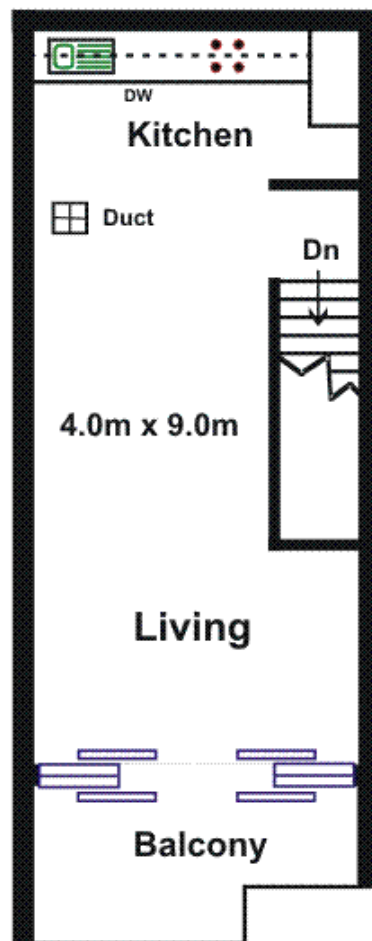
765 Marion Road Ascot Park SA
08 8277 1777



Ground Floor



First Floor



Second Floor

Area	M ²
Ground Floor	53.44
First Floor	47.23
Second Floor	42.79
Total Approx	143.46

Please Note: Every care has been taken to verify the correctness of the areas and details used in this leaflet. No warranty or representation is given or made as to the correctness of the information supplied and neither the owners, illustrator nor the Agents can accept responsibility for errors or omissions. The sketch is for illustration purposes only and intending purchasers should satisfy themselves independently regarding sizes, layout and location of the property. Please check with local council that all structures are approved by council.