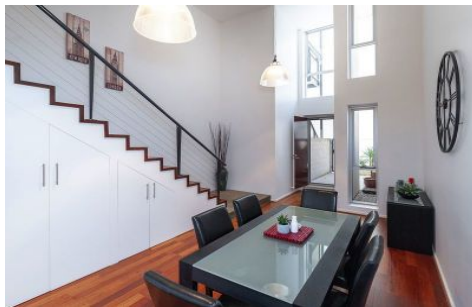





MAGAIN



18/237 Wakefield Street ADELAIDE SA

2  **1**  **1** 

Wonderful, Warehouse Style Apartment!

Not your average apartment in not your average location. This stunning, townhouse style apartment of approx 137sqm is unique in the CBD with high vaulted ceilings giving you a great sense of internal space. A versatile floor plan over 2 levels offers defined living and dining areas, 2 generous sized bedrooms and toilets on both levels with a separate laundry. Externally there are 2 lovely private courtyards perfect for those early morning coffee's as well as a bit of gardening if you so desire and a secure underground car park.

This imposing apartment is located at the rear of the group on the courtyard level which has the huge advantage of not

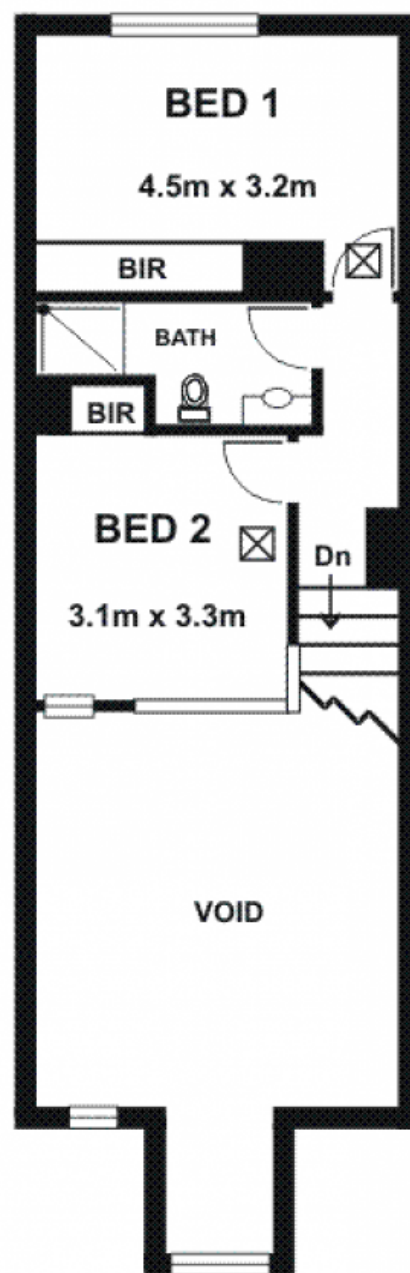
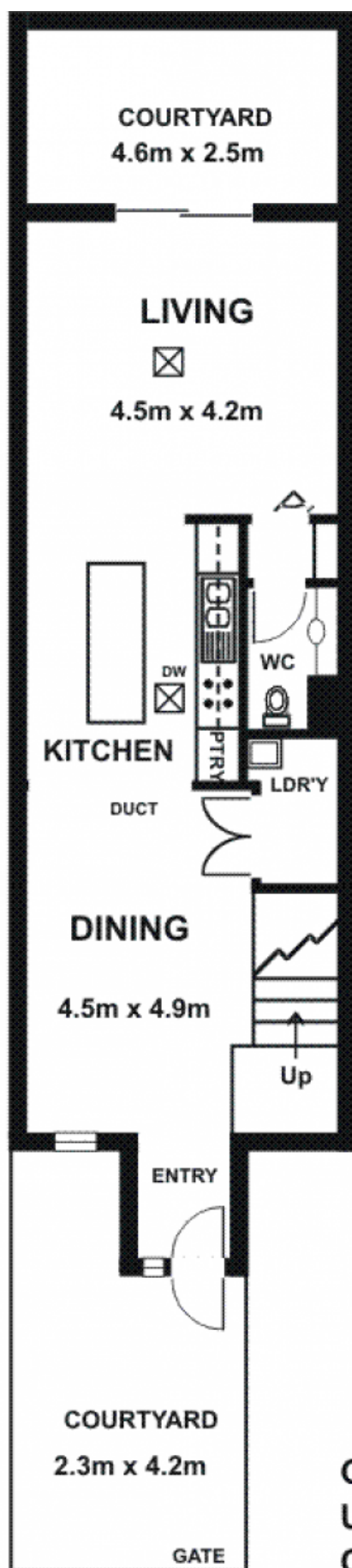
Type : Apartment

View : <https://www.magain.com.au/property/18237-wakefield-street-adelaide-sa/8423796>

[For full version visit the website](https://www.magain.com.au)

<https://www.magain.com.au>
Magain Real Estate

765 Marion Road Ascot Park SA
08 8277 1777



UPPER FLOOR

GROUND FLOOR

Ground Floor
Upper Floor
Court Yard

70.82sqm
42.50sqm
23.81sqm

Total

Approx.

137.13sqm

Please Note: Every care has been taken to verify the correctness of the areas and details used in this leaflet. No warranty or representation is given or made as to the correctness of the information supplied and neither the owners, illustrator nor the Agent accept responsibility for errors or omissions. The sketch is for illustration purposes only and intending purchasers should satisfy themselves independently regarding sizes, layout and location of the property. Please check with local council that all structures are approved by council.