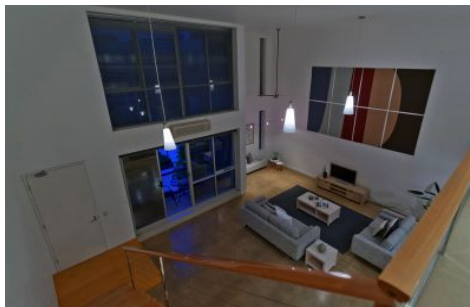




MAGAIN



33/237 Wakefield Street ADELAIDE SA

2  1  1 

182 Sqm Of Luxurious Warehouse Style Living!

This imposing, loft style apartment is set at the rear of the group on the first level, enabling tranquil views of the Japanese themed garden and stunning Easterly views of the Adelaide hills. With an abundance of both space and natural light, a versatile floor plan over 2 levels and a prime CBD location you have all the ingredients for a low maintenance, high excitement City lifestyle!

The Why To Buy:-)

With a combination of vaulted ceilings, huge floor to ceiling picture windows, stunning polished concrete flooring and earthy natural tones throughout this apartment has to be

Type : Apartment

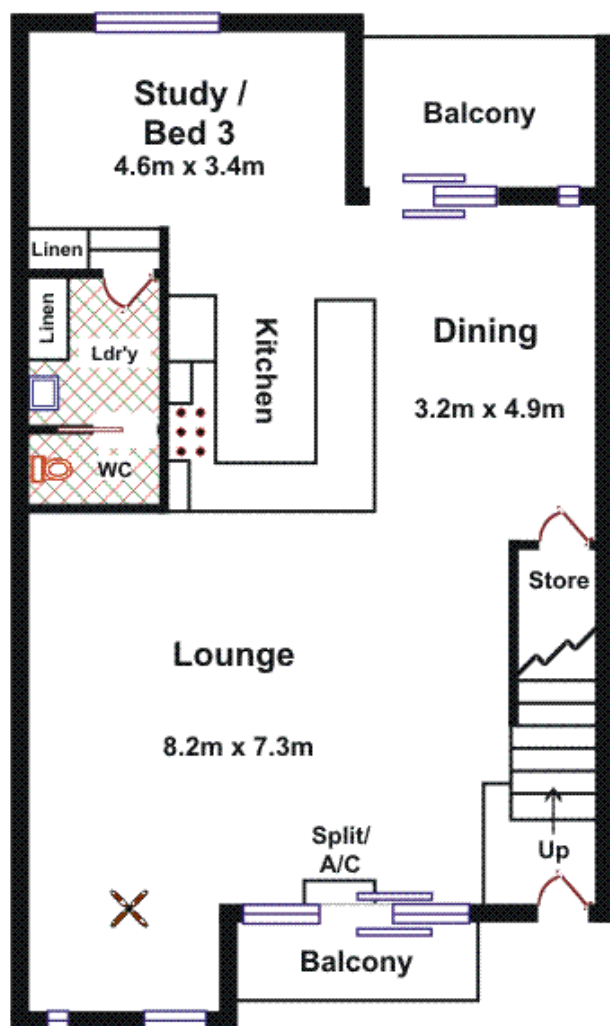
View : <https://www.magain.com.au/property/33237-wakefield-street-adelaide-sa/8423848>

[For full version visit the website](https://www.magain.com.au)

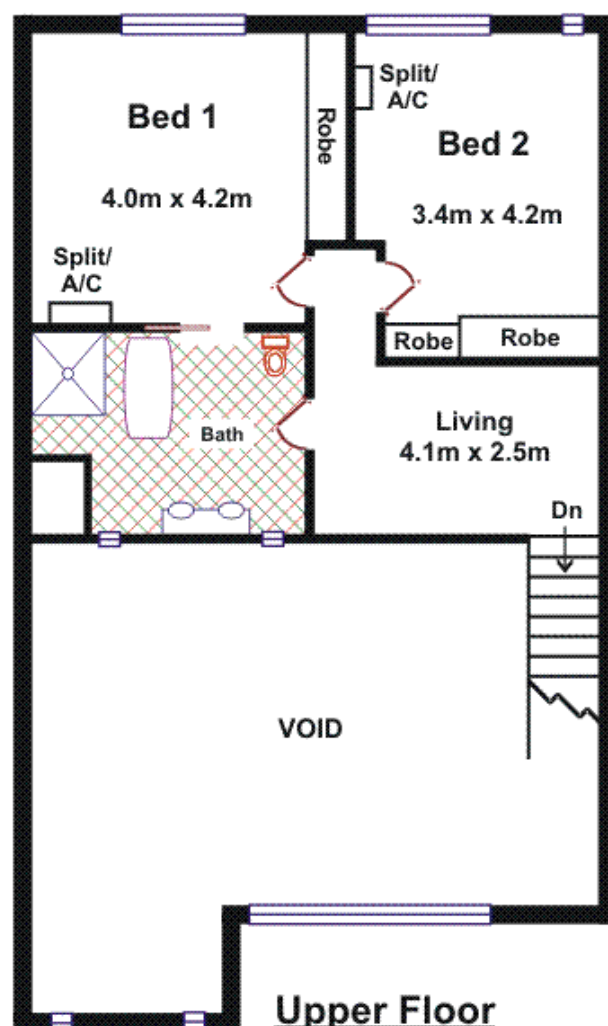
<https://www.magain.com.au>
Magain Real Estate

765 Marion Road Ascot Park SA
08 8277 1777

Area	M ²
Ground Floor	111.59
Upper Floor	59.79
Balcony	11.50
Total Approx	182.88



Ground Floor



Upper Floor

Please Note: Every care has been taken to verify the correctness of the areas and details used in this leaflet. No warranty or representation is given or made as to the correctness of the information supplied and neither the owners, illustrator nor the Agent accept responsibility for errors or omissions. The sketch is for illustration purposes only and intending purchasers should satisfy themselves independently regarding sizes, layout and location of the property. Please check with local council that all structures are approved by council.