

# MAGAIN



4/300 Main South Road Morphett Vale SA

3 2 2

## FAST FACTS

- > \$580 per week
- > available now
- > pets negotiable

## DESCRIPTION

> situated in a convenient location within an easy walking distance to amenities, this character filled home oozes charm and appeal. With its expansive multi-level layout, high ceilings and copious amount of natural light, this private abode sets a high standard for family living and comfort

> the designer kitchen will bring out the inner chef in you, with a gas cook-top, dishwasher, double sink and plenty of storage space

[For full version visit the website](#)

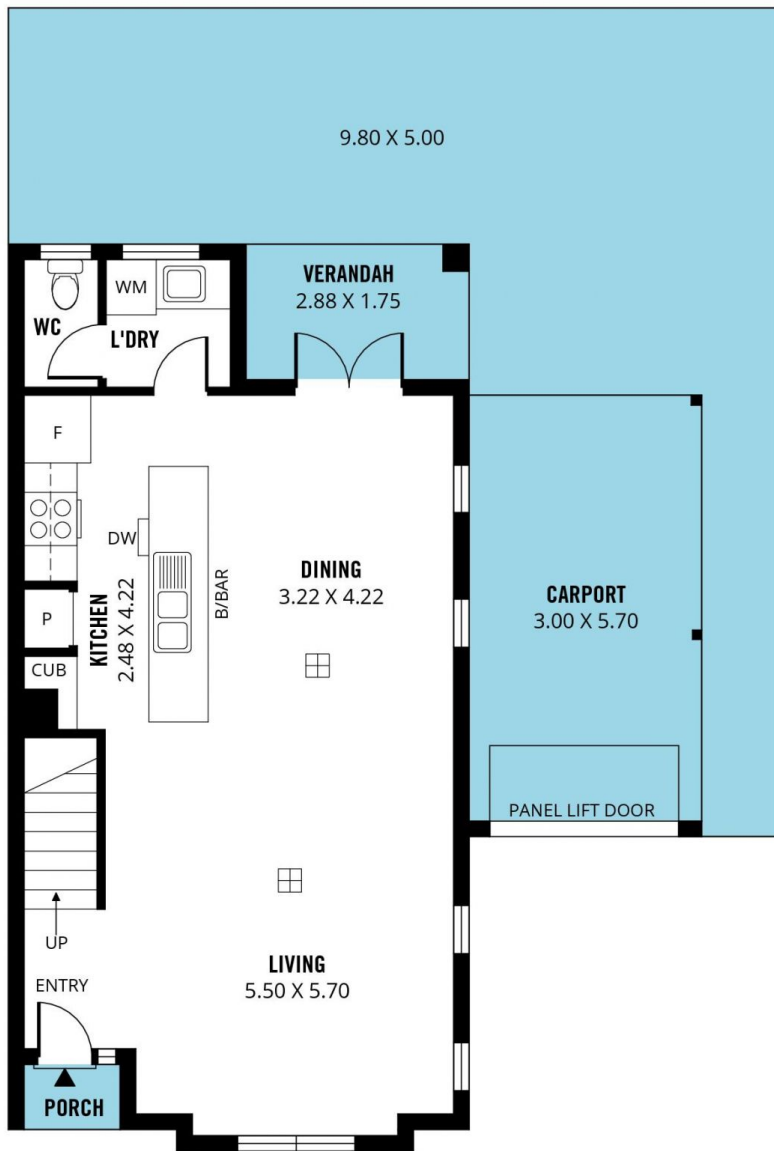
**Type** : House  
**Building Size** : 125 sqm  
**Land Size** : 164 sqm  
**View** : <https://www.magain.com.au/property/4300-main-south-road-morphett-vale-sa/8423881>



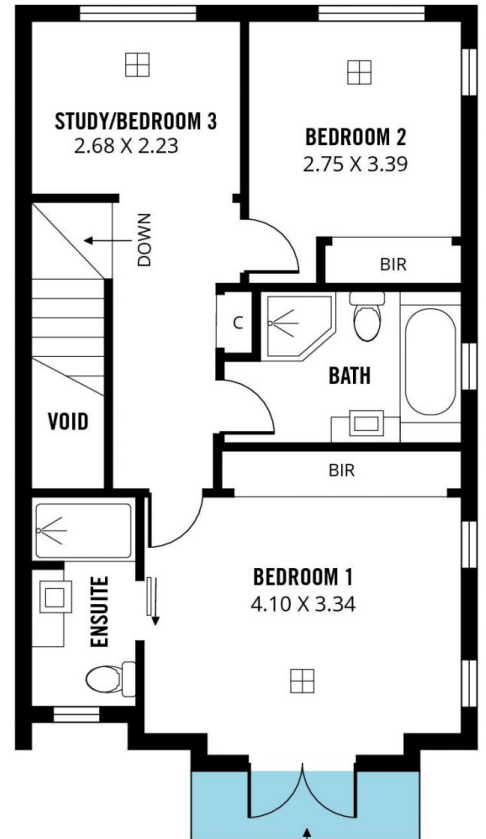
**Zoe Thorpe**  
08 8277 1777

<https://www.magain.com.au>  
Magain Real Estate

765 Marion Road Ascot Park SA  
08 8277 1777



**GROUND FLOOR**



**UPPER FLOOR**



Scale in metres. This drawing is for illustration purposes only. All measurements are approximate and details intended to be relied upon should be independently verified.

Produced by **The Fotobase Group**