

# MAGAIN



## 1 Shire Court WOODCROFT SA

5 3 2

Contact Travis Denham or Craig Thomson for viewing times.

This superb home is situated on a generous corner allotment of approximately 1036sqm, set in the picturesque Woodcroft Farm Estate. Ideally located close to local amenities including shops, quality schools, parks, public transport, access to the southern expressway and more. It is a must see for growing families and those that are seeking somewhere truly special to call home.

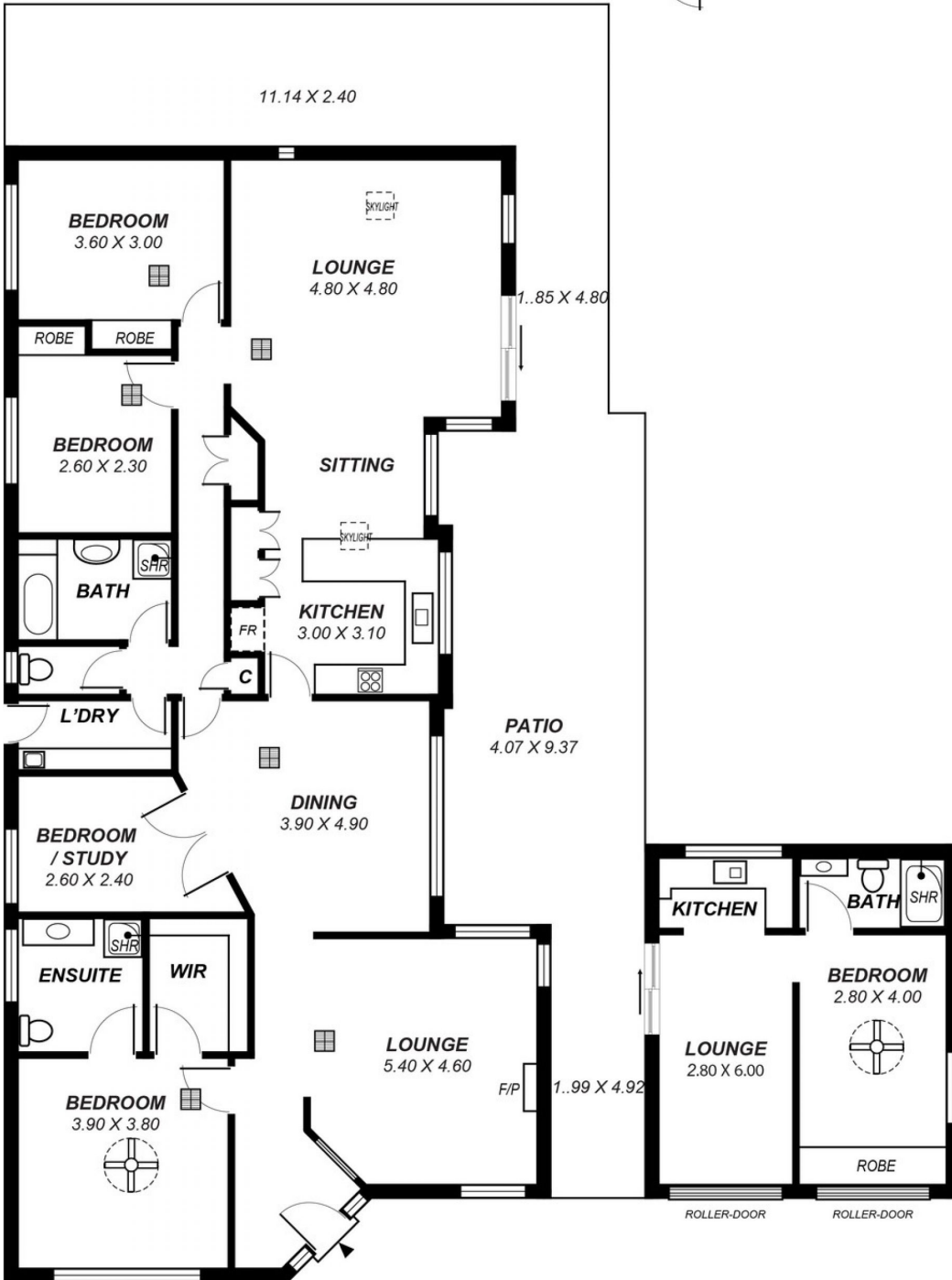
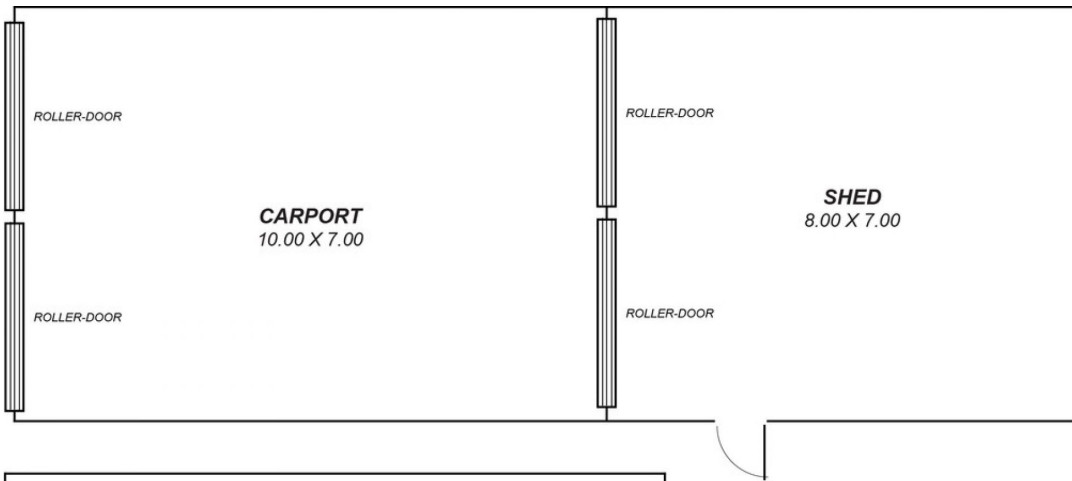
The home offers 4 spacious bedrooms under the main roof, each with quality carpet flooring. The master suite offers a ceiling fan, large ensuite and walk in robe. Bedrooms 2 and 3 each feature built in robes. The rooms are serviced by

[For full version visit the website](https://www.magain.com.au)

**Type** : House  
**Building Size** : 21 sqm  
**Land Size** : 1036 sqm  
**View** : <https://www.magain.com.au/property/1-shire-court-woodcroft-sa/8424102>



**Travis Denham**  
08 8398 1494



*This drawing is for illustration purposes only .  
All measurements are approximate and details intended  
to be relied upon should be independently verified.*

Area	m <sup>2</sup>
Living:	145.70
Carport:	70.00
Shed:	56.00
Patio:	83.54
<b>Total:</b>	<b>355.24</b>