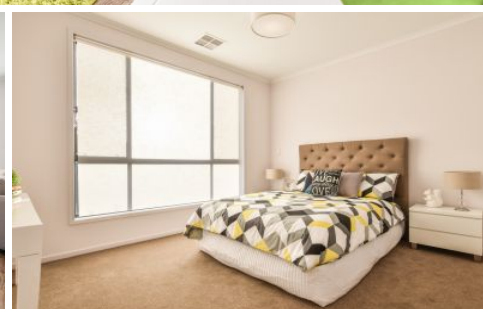
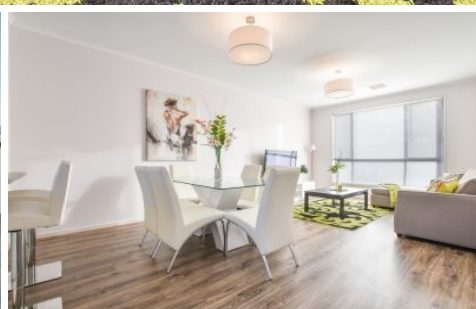


MAGAIN



14C Sedunary Road MORPHETT VALE SA

3 2 1

Contact Travis Denham or Craig Thomson for viewing times.

This brand new Statesman built home is ideally situated on a quiet street close to local amenities including shops, quality schools, public transport and more. An absolute must see for first home buyers, downsizers or those seeking a superb investment opportunity.

The open plan kitchen features quality stainless steel appliances including gas cook-top, electric oven and dishwasher. Equipped with ample cupboard storage and breakfast bar overlooking the open dining and living areas.

Offering 3 spacious bedrooms throughout, each with quality

Type : House
Land Size : 281 sqm
View : <https://www.magain.com.au/property/14c-sedunary-road-morphett-vale-sa/8424160>



Travis Denham
08 8398 1494

[For full version visit the website](https://www.magain.com.au)

14C Sedunary Road Morphett Vale, South Australia



Picture intended as a reference only. Any specific measurements required should be obtained by an independent surveyor.