

MAGAIN



46-100 Pimpala Road MORPHETT VALE SA

2  1  1 

Contact Travis Denham or Craig Thomson for viewing times.

This fantastic homette features multiple updates throughout, offering a modern yet low maintenance home. Ideally situated in a quiet complex, conveniently located close to local shops, quality schools, public transport, access to the southern expressway and more. It is a must see for first home buyers, downsizers or those seeking a superb investment opportunity.

The beautifully updated kitchen features quality appliances including gas cook-top and electric oven. Equipped with ample cupboard storage and overlooks the spacious meals and family areas.

[For full version visit the website](https://www.magain.com.au/property/46-100-pimpala-road-morphett-vale-sa/8424162)

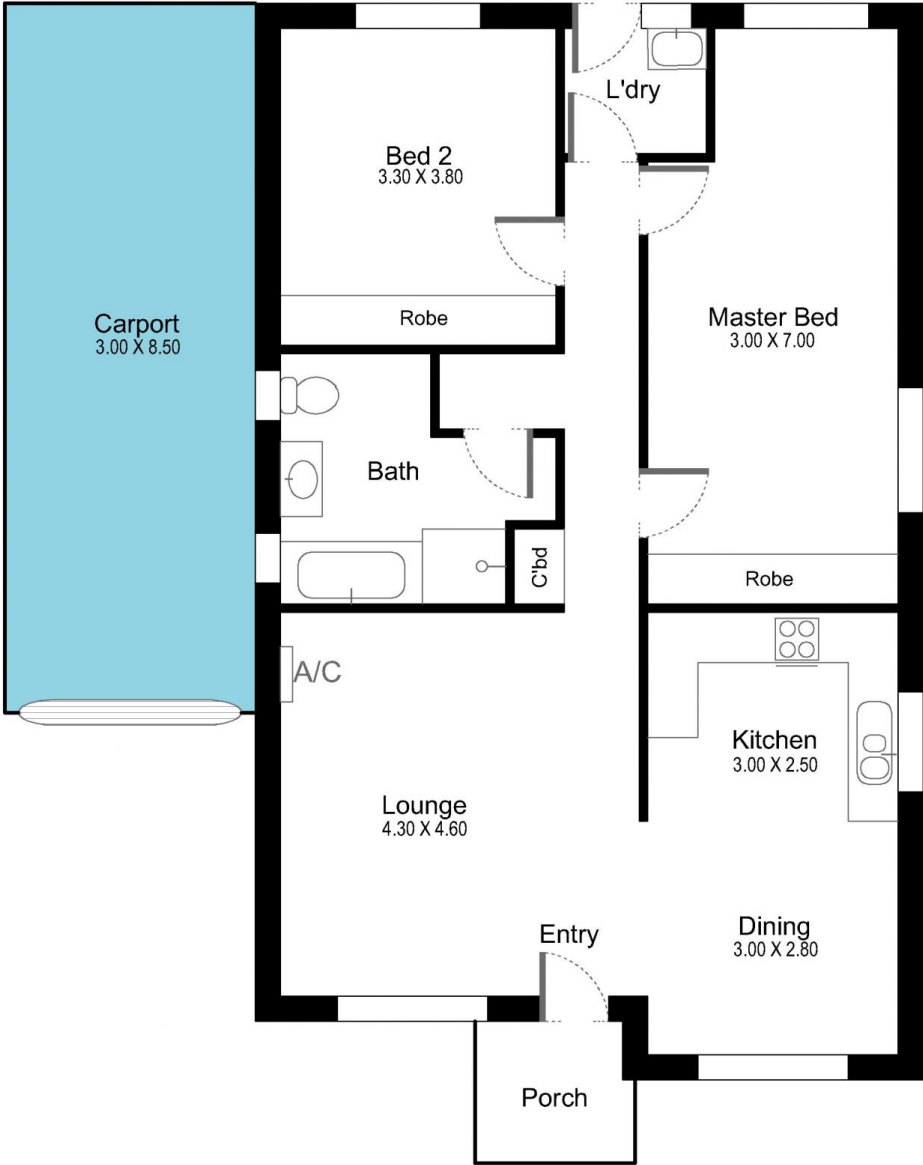
Type : Unit
Building Size : 11 sqm
Land Size : 260 sqm
View : <https://www.magain.com.au/property/46-100-pimpala-road-morphett-vale-sa/8424162>



Travis Denham
08 8398 1494

46/100 Pimpala Road Morphett Vale, South Australia

Shed
2.50 X 1.50



Picture intended as a reference only. Any specific measurements required should be obtained by an independent surveyor.