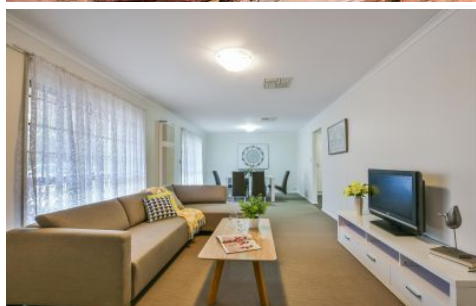


# MAGAIN



## 12 Shropshire Close OLD REYNELLA SA

3  2  2 

Located on a quiet cul-de-sac in the highly sought-after Carew's Fields Estate, this delightful three-bedroom family home is perfect for first home buyers, down-sizers and savvy investors looking to increase their portfolio. With a large solar system, a number of updates and renovations and a generous outdoor entertaining area, this property won't be on the market for long!

As you enter the home you are greeted with a charming formal entry. To the left is a spacious, open plan living/dining area, spanning an incredible 7.9 by 3.7 metres. As well as two picture windows, this space is serviced by ducted-evaporative cooling, a heating unit and quality carpets. Adjacent to this is the kitchen which features slate flooring and an additional informal meals area that opens

[For full version visit the website](https://www.magain.com.au/property/12-shropshire-close-old-reynella-sa/8424217)

**Type** : House  
**Building Size** : 16 sqm  
**Land Size** : 603 sqm  
**View** : <https://www.magain.com.au/property/12-shropshire-close-old-reynella-sa/8424217>



**Travis Denham**  
08 8398 1494

12 Shropshire Close Old Reynella, South Australia.



Picture intended as a reference only. Any specific measurements required should be obtained by an independent surveyor.