

MAGAIN



3/1 Sampson Road MITCHELL PARK SA

2  1  1 

With all the hard work already done, this spacious, two storey townhouse is move-in ready! Positioned in a well-presented and quiet complex, this home is ideal for first home buyers, investors and those looking to downsize without compromising on space and lifestyle.

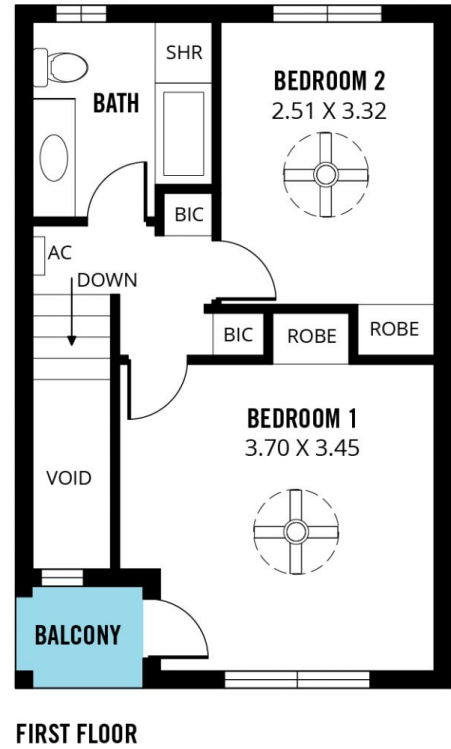
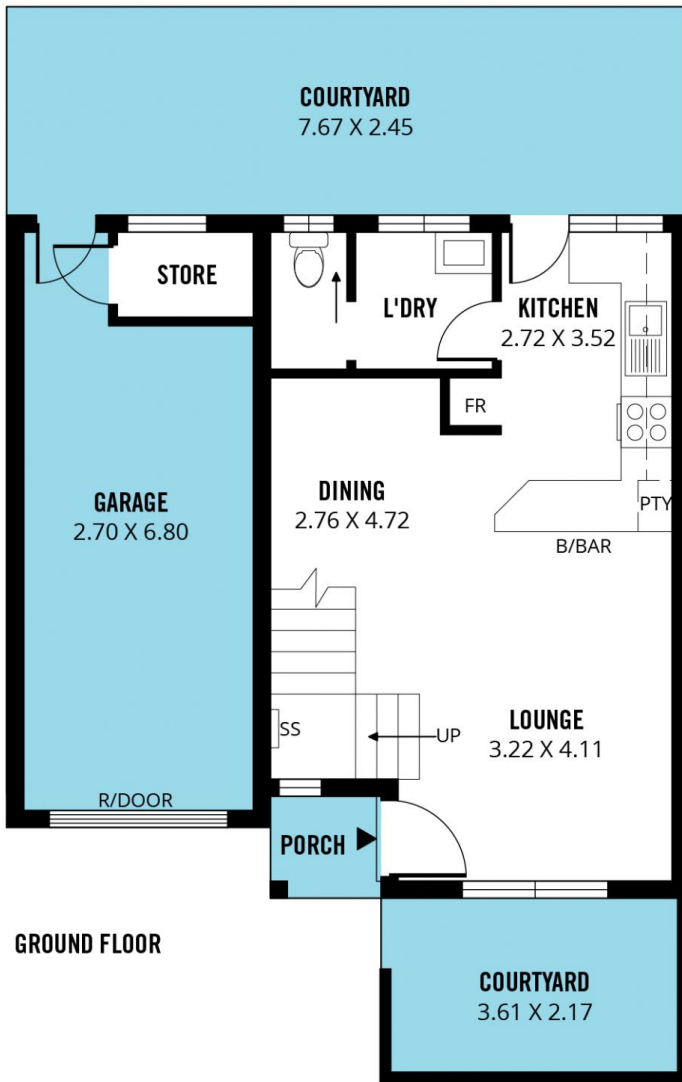
As we enter the home we are greeted with a generous, open plan kitchen, living and dining area. The living/dining features a large front-facing window, allowing an abundance of natural light to fill the space, as well as a reverse cycle split system for optimum temperature control. The kitchen is most certainly impressive with quality cabinetry and benchtops, stainless steel appliances and ample bench and cupboard space for storage convenience. Unlike many other townhouses, there is a spacious laundry

Type : Townhouse
Building Size : 9 sqm
Land Size : 92 sqm
View : <https://www.magain.com.au/property/31-sampson-road-mitchell-park-sa/8424245>



Travis Denham
08 8398 1494

[For full version visit the website](https://www.magain.com.au)



Scale in metres. This drawing is for illustration purposes only. All measurements are approximate and details intended to be relied upon should be independently verified.

Produced by **The Fotobase Group**