

MAGAIN



46 Nash Lane MORPHETT VALE SA

2  1  1 

Located on a quiet and family friendly lane is this affordable and beautifully presented two-bedroom torrens titled home, situated on a spacious 470sqm allotment. With low maintenance gardens and an attractive rental return, savvy investors, downsizers, first home buyers or simply those looking for the freedom of a strata free lifestyle cannot afford to miss out on viewing this home before it is sold.

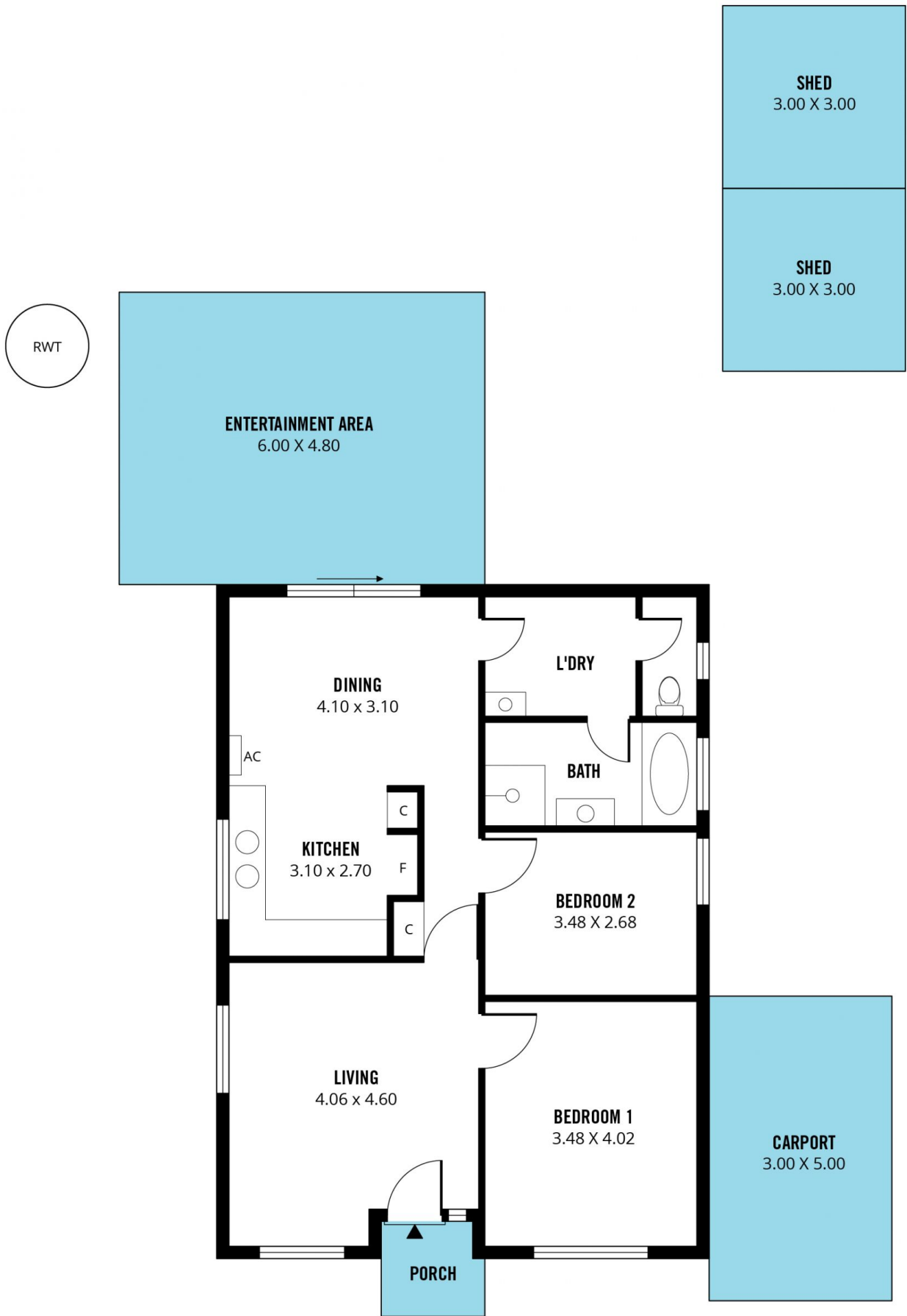
Upon entering this neat and tidy home, you are greeted with a spacious, light-filled living room featuring large floor to ceiling windows. To the right of the entry is the master bedroom that spans a generous 3.48m x 4.02m and is serviced by a front facing window. Bedroom two is also of ample size and both rooms have recently been re-carpeted.

[For full version visit the website](https://www.magain.com.au)

Type : House
Building Size : 9 sqm
Land Size : 470 sqm
View : <https://www.magain.com.au/property/46-nash-lane-morphett-vale-sa/8424303>



Travis Denham
08 8398 1494



Scale in metres. This drawing is for illustration purposes only. All measurements are approximate and details intended to be relied upon should be independently verified.

Produced by **The Fotobase Group**