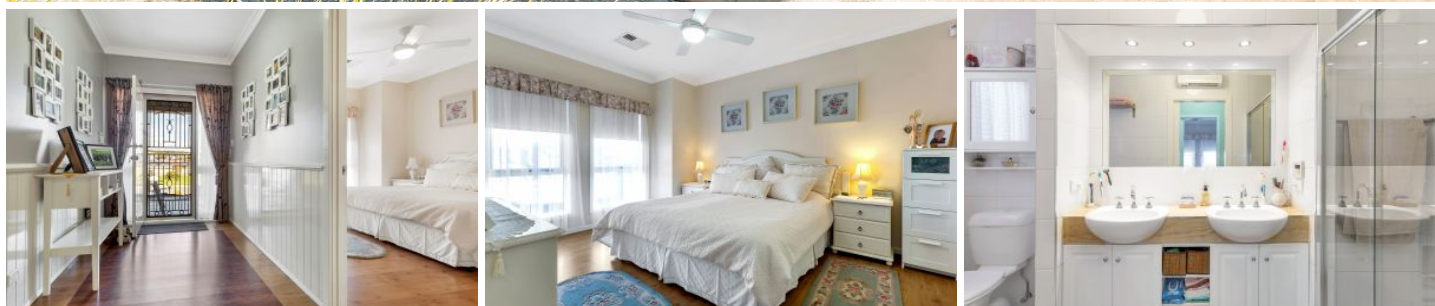


# MAGAIN



## 40 Sylvan Circuit NOARLUNGA DOWNS SA

4 2 2

Located on a quiet circuit, amongst other quality homes in the peaceful suburb of Noarlunga Downs is this stunning four bedroom, two bathroom home that is perfect for first home buyers, the growing family or savvy investors alike. With genuine street appeal, a highly versatile floorplan and a large double garage and additional space for storage of a caravan or boat, buyers cannot afford to miss this wonderful opportunity.

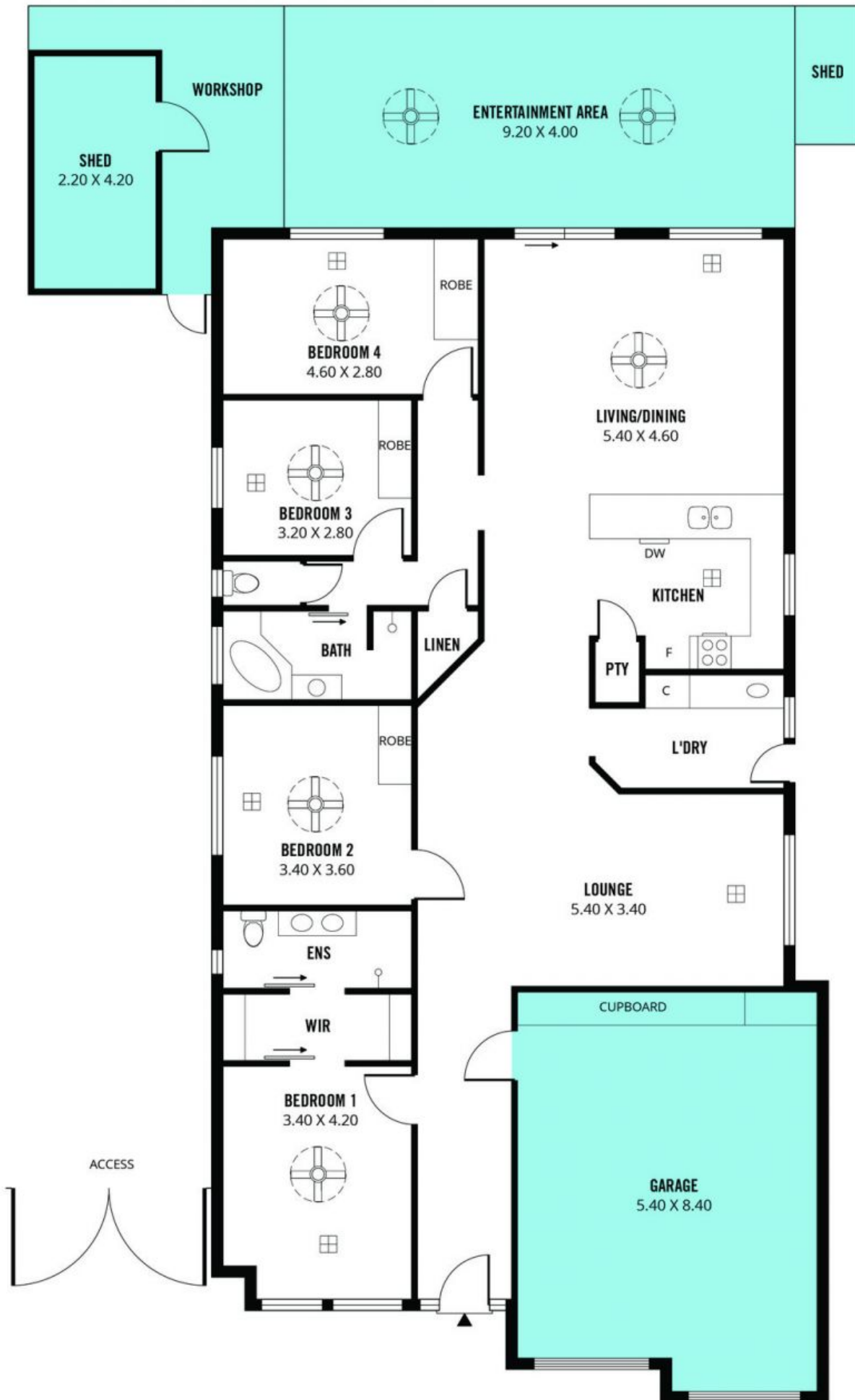
Entering the home, to the left we find the master bedroom which is complete with double windows (allowing an abundance of natural light to fill the space), a walk-in robe and ensuite that features a spacious shower and his & hers sinks. Continuing through the home, there is an additional lounge area that spans a generous 5.40m x 3.40m, perfect

[For full version visit the website](https://www.magain.com.au/property/40-sylvan-circuit-noarlunga-downs-sa/8424328)

**Type** : House  
**Building Size** : 19 sqm  
**Land Size** : 436 sqm  
**View** : <https://www.magain.com.au/property/40-sylvan-circuit-noarlunga-downs-sa/8424328>



**Travis Denham**  
08 8398 1494



Scale in metres. This drawing is for illustration purposes only. All measurements are approximate and details intended to be relied upon should be independently verified.

Produced by **The Fotobase Group**