

MAGAIN



10/258-262 Anzac Highway PLYMPTON SA

2 1 2

With all the hard work already done, this spacious, modern & unique two-bedroom unit is absolutely perfect for savvy investors, first home buyers and those looking to downsize without compromising on space and lifestyle. With a great number of updates, a generous open plan area and positioned near the end of the complex for absolute privacy, this property will not be on the market for long!

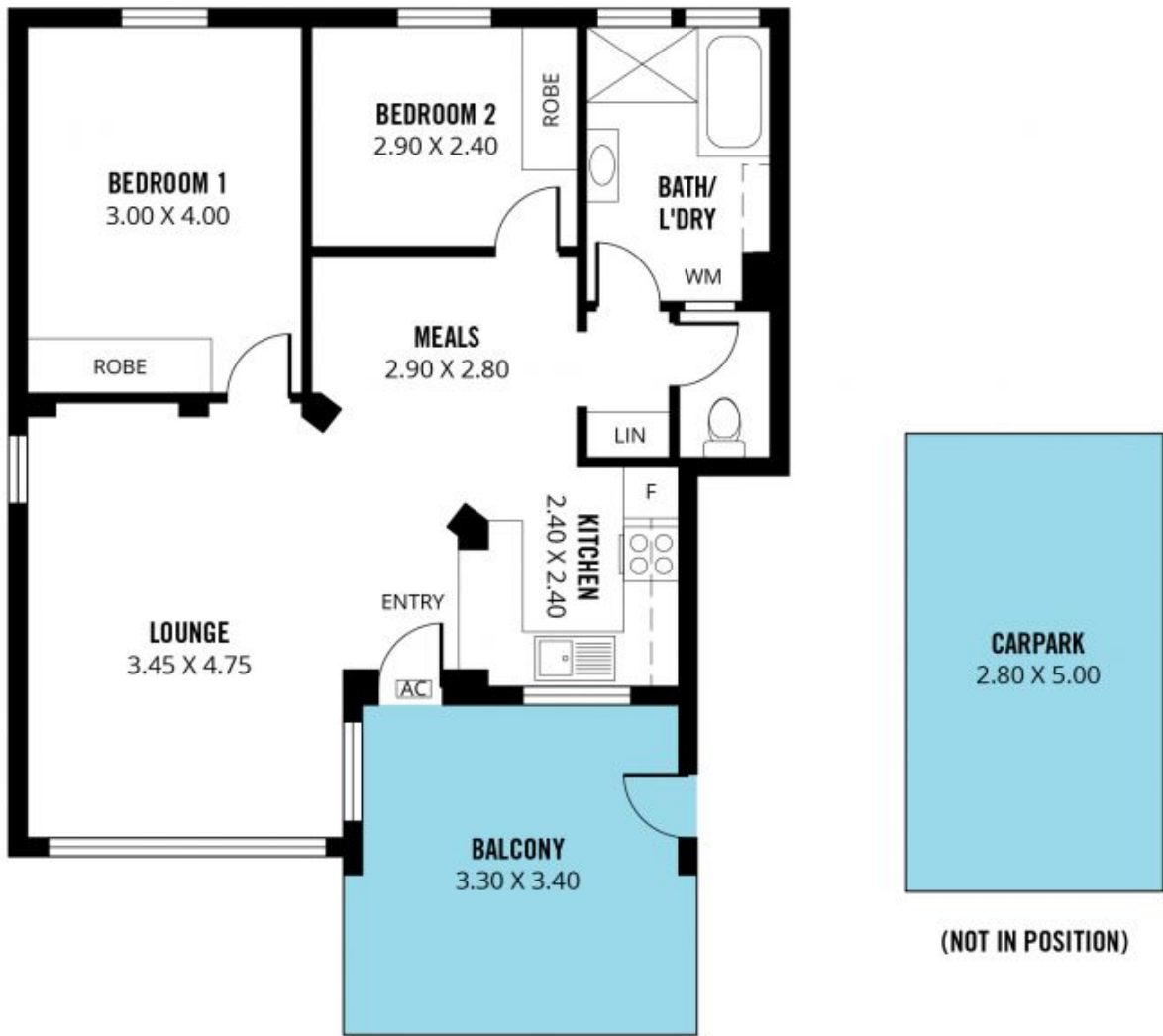
As we enter the home, we are greeted with a charming open plan living/kitchen & dining area. The kitchen in the home is spacious and features beautiful white cabinetry, ample bench and drawer space - as well as a gas stovetop and a servery. The lounge/dining space is versatile and is serviced by a front-facing window, allowing an abundance of natural light to fill the room.

[For full version visit the website](https://www.magain.com.au/property/10-258262-anzac-highway-plympton-sa/84-24346)

Type : Unit
Building Size : 8 sqm
View : <https://www.magain.com.au/property/10-258262-anzac-highway-plympton-sa/84-24346>



Travis Denham
08 8398 1494



Scale in metres. This drawing is for illustration purposes only. All measurements are approximate and details intended to be relied upon should be independently verified. Produced by **The Fotobase Group**