

MAGAIN



6 Thomas Street SEACLIFF PARK SA

3  1  2 

Presenting an incredible opportunity for you to secure yourself a position in the highly sought after suburb of Seacliff Park is this spacious, three bedroom, two living, family home. This property is ideally suited for the shrewd investor; with a spacious 668 sqm block (approx.), a generous backyard and the opportunity to turn this home into everything you've been dreaming of; savvy buyers cannot afford to miss out on the lifestyle that compliments the purchase of this home.

As we enter into the home, we are greeted with a charming formal entry. To the right of the entry is the master bedroom which is certainly spacious and provides built in robes for storage convenience & bedroom 2 which is alike the master and also includes a built-in robe. Bedroom 3

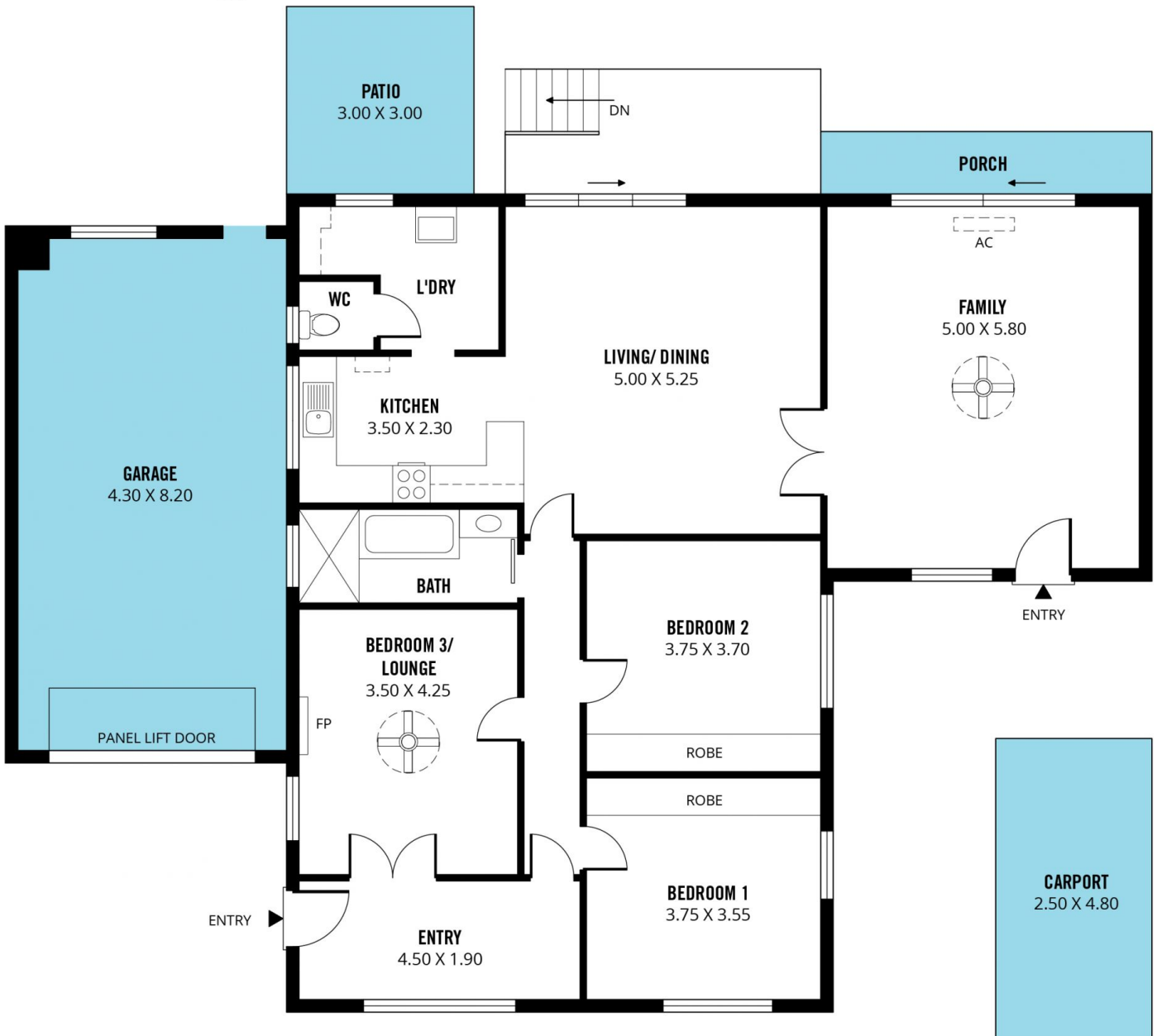
[For full version visit the website](#)

Type : House
Building Size : 32 sqm
Land Size : 668 sqm
View : <https://www.magain.com.au/property/6-thomas-street-seacliff-park-sa/8424360>



Travis Denham
08 8398 1494

RWT



Scale in metres. This drawing is for illustration purposes only. All measurements are approximate and details intended to be relied upon should be independently verified.

Produced by **The Fotobase Group**