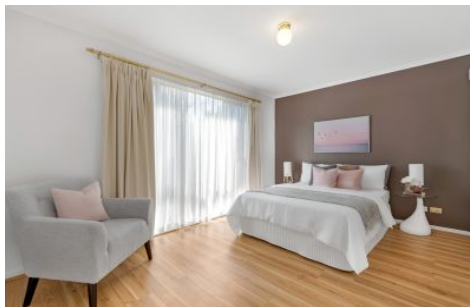


MAGAIN



20 Tania Drive ABERFOYLE PARK SA

4 2 2

Magain - COVID-19 Inspection Protocol

At Magain Real Estate, the safety of our staff, clients and the public is of the utmost importance to us. At this time of uncertainty, we need to align with government health recommendations and put precautions in place to protect the community.

To ensure your health and safety, we will arrange viewings BY APPOINTMENT only to limit the number of people at any one time. But rest assured our team are here to accommodate your needs with viewing times. Please don't hesitate to contact the agent for further details and inspection times. We understand this is a difficult time for everyone and we thank you for your cooperation.

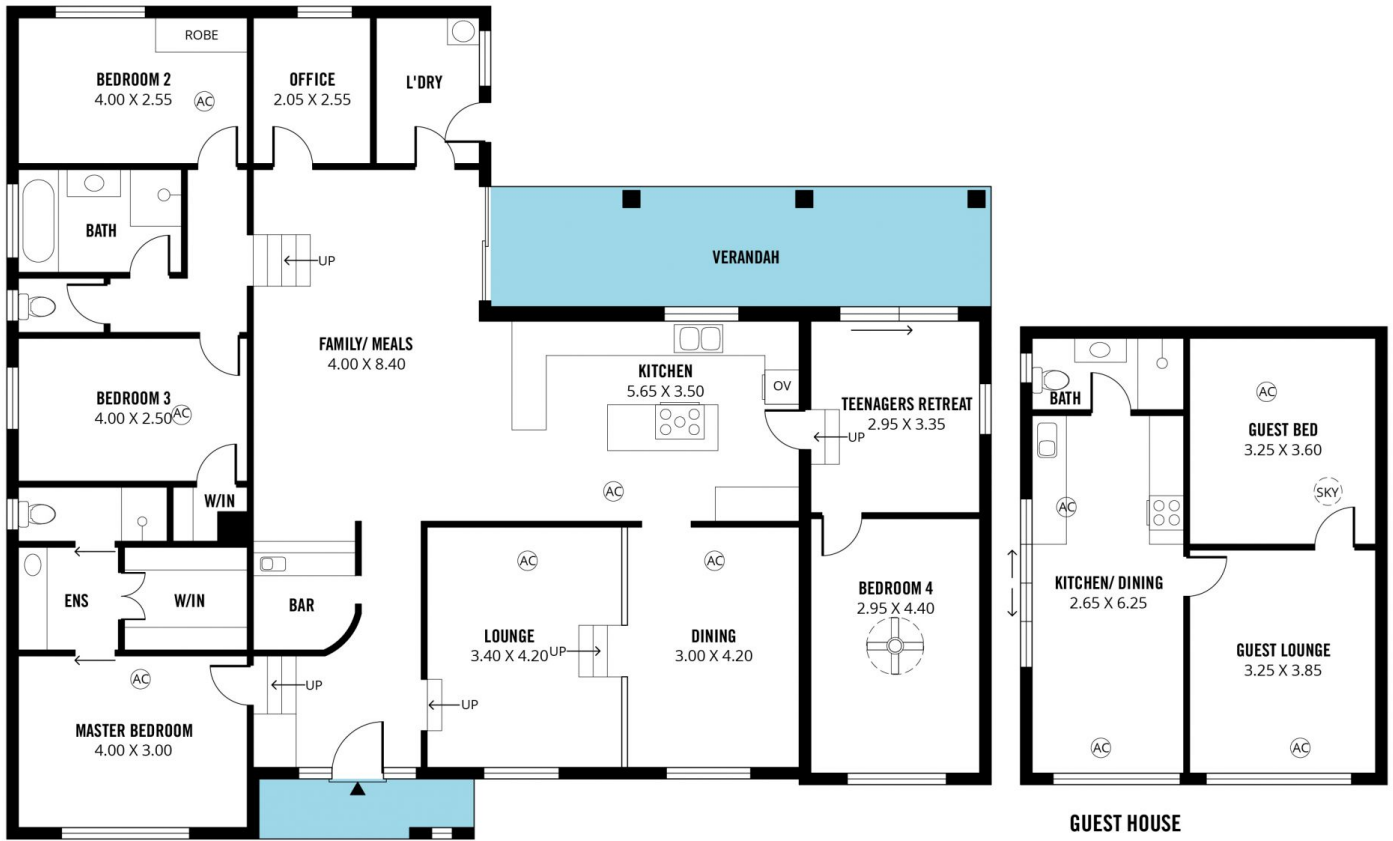
Situated in the highly-sought after suburb of Aberfoyle Park

[For full version visit the website](https://www.magain.com.au/property/20-tania-drive-aberfoyle-park-sa/8424381)

Type : House
Building Size : 21 sqm
Land Size : 695 sqm
View : <https://www.magain.com.au/property/20-tania-drive-aberfoyle-park-sa/8424381>



Travis Denham
08 8398 1494



Scale in metres. This drawing is for illustration purposes only. All measurements are approximate and details intended to be relied upon should be independently verified.

Produced by The Fotobase Group