

MAGAIN



8 Claremont Street MORPHETT VALE SA

3  1  1 

Located in a quiet and pleasant street and in close proximity to a vast number of local amenities is this spacious, three-bedroom family home. With a generous 633 sqm (approx.) block and offering dual driveways with rear access, a sizeable outdoor entertaining area and a versatile, but functional floorplan, this home is the perfect addition for the savvy investor or a great first purchase for the growing family.

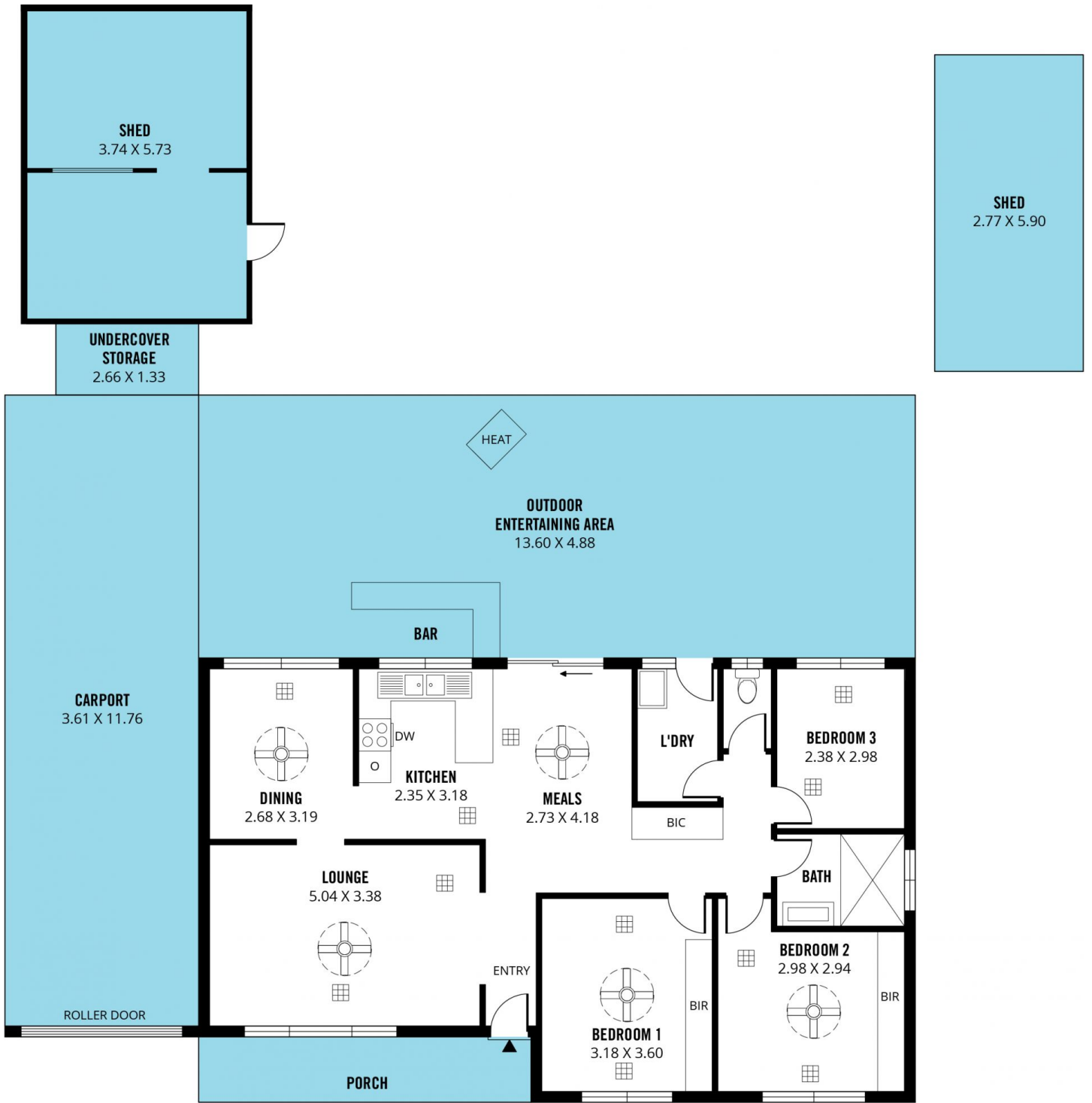
Type : House
Building Size : 12 sqm
Land Size : 633 sqm
View : <https://www.magain.com.au/property/8-claremont-street-morphett-vale-sa/8424410>

As we enter the home, to the left of the entry we are greeted with the front living area that benefits from a large front facing window that spills an abundance of natural light into the space. Adjacent to this area is the kitchen/dining and meals area which is large enough to seat the whole family! The kitchen is both functional and spacious, with an



Travis Denham
08 8398 1494

[For full version visit the website](https://www.magain.com.au)



Scale in metres. This drawing is for illustration purposes only. All measurements are approximate and details intended to be relied upon should be independently verified.

Produced by **The Fotobase Group**