

# MAGAIN



## 6 Kansy Court MORPHETT VALE SA

4  2  1 

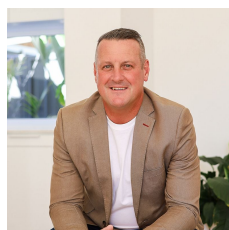
Contact Travis Denham or Craig Thomson for viewing times.

This fantastic family home is situated on a generous allotment of approximately 779sqm, set on a quiet cul-de-sac street and ideally located close to local shops, quality schools, parks, public transport, access to the southern expressway and more. It is a must see for first home buyers, growing families or those seeking a superb investment opportunity.

The spacious floor-plan provides 4 good sized bedrooms. The master suite is fitted with carpet flooring, bay window, a large 3 door mirrored built in robe and private ensuite with huge spa bath and mounted TV. Bedrooms 2, 3 and 4

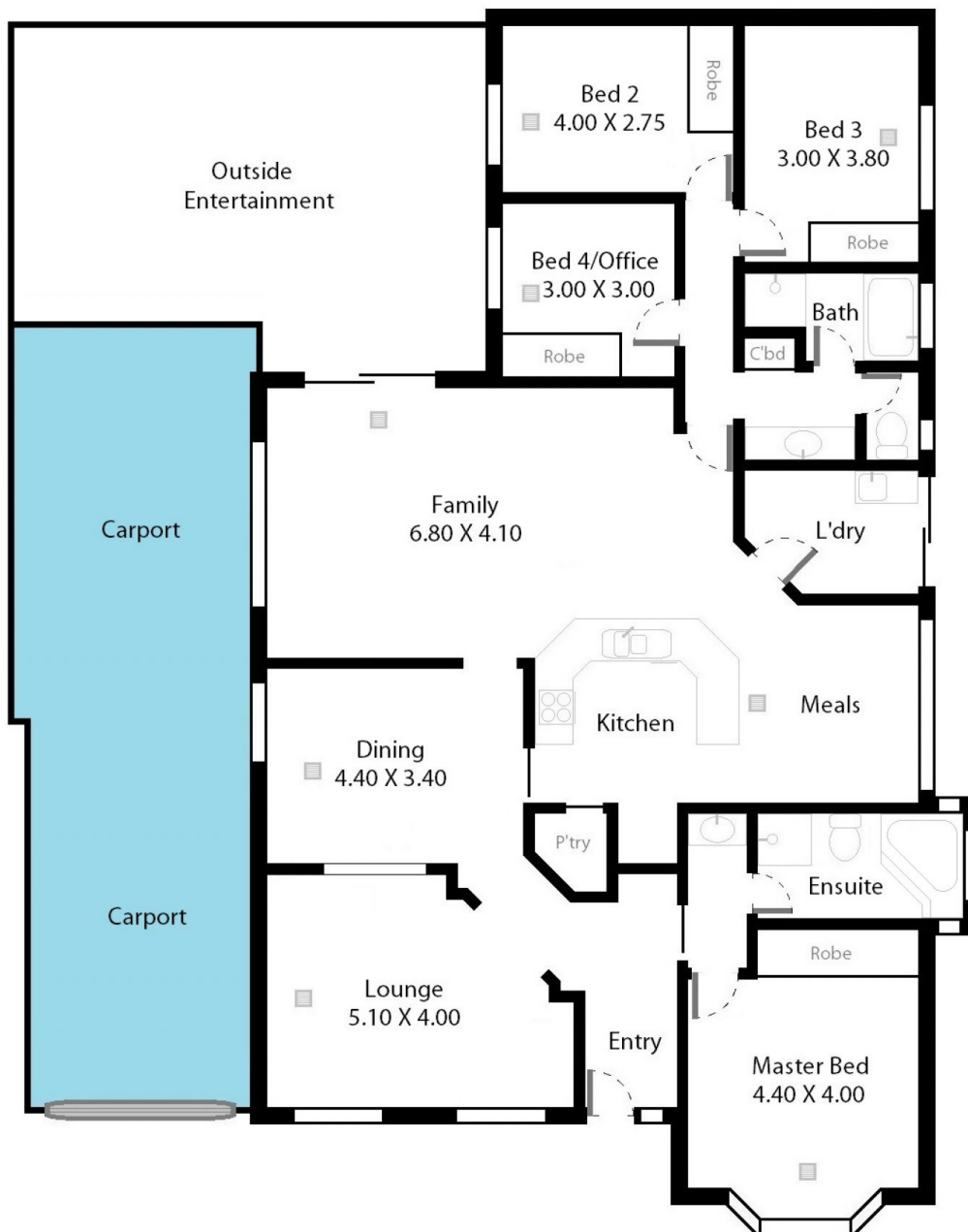
[For full version visit the website](https://www.magain.com.au/property/6-kansy-court-morphett-vale-sa/8424423)

**Type** : House  
**Building Size** : 22 sqm  
**Land Size** : 779 sqm  
**View** : <https://www.magain.com.au/property/6-kansy-court-morphett-vale-sa/8424423>



**Travis Denham**  
08 8398 1494

# 6 Kansy Court Morphett Vale, South Australia.



Picture intended as a reference only. Any specific measurements required should be obtained by an independent surveyor.