

MAGAIN



14 Sandalwood Grove WOODCROFT SA

4 2 3

Contact Travis Denham or Craig Thomson for viewing times.

This superb family home is situated on a generous allotment of approximately 896sqm, set on a quiet no through road. Ideally located in the picturesque Woodcroft Farm Estate, within close proximity to beautiful wineries, parks, tennis courts, local shops, quality schools, public transport and more! It is a must see for growing families, or those seeking somewhere truly special to call home.

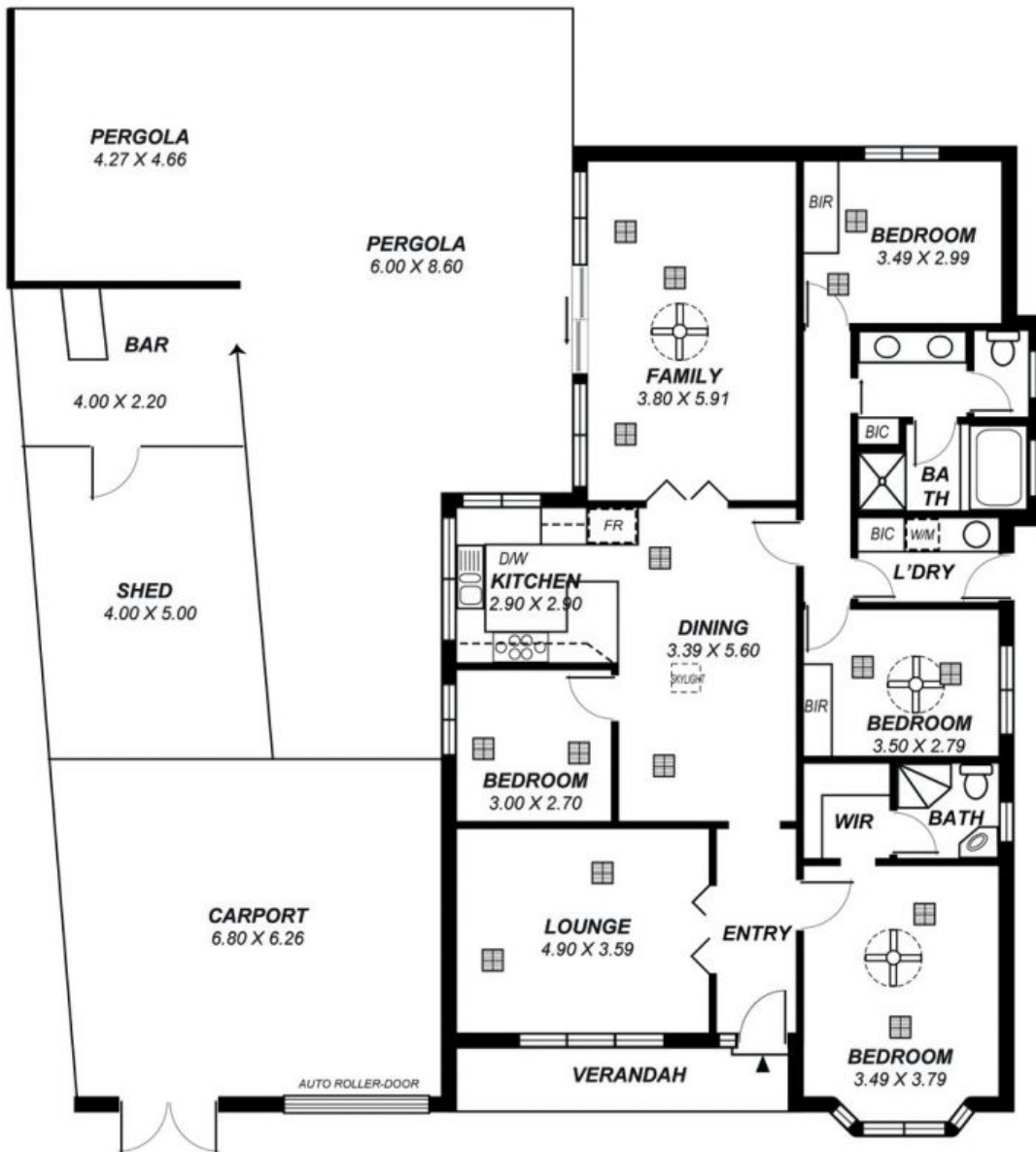
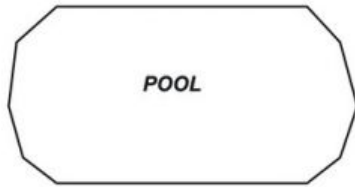
The home features 4 bedrooms throughout. The spacious master at the front of the home offers carpet flooring, ceiling fan, bay window, beautifully updated ensuite and a walk in robe. Bedrooms 2 and 3 are each fitted with quality

[For full version visit the website](https://www.magain.com.au/property/14-sandalwood-grove-woodcroft-sa/842443)

Type : House
Building Size : 18 sqm
Land Size : 896 sqm
View : <https://www.magain.com.au/property/14-sandalwood-grove-woodcroft-sa/842443>
1



Travis Denham
08 8398 1494



*This drawing is for illustration purposes only .
All measurements are approximate and details intended
to be relied upon should be independently verified.*